

**SURB7 Antibody (monoclonal) (M05)**

Mouse monoclonal antibody raised against a full length recombinant SURB7.

Catalog # AT4113a

**Specification**

---

**SURB7 Antibody (monoclonal) (M05) - Product Information**

Application	IF, WB, E
Primary Accession	<a href="#">O13503</a>
Other Accession	<a href="#">BC008380</a>
Reactivity	Human
Host	mouse
Clonality	Monoclonal
Isotype	IgG1 Kappa
Calculated MW	15564

**SURB7 Antibody (monoclonal) (M05) - Additional Information**

Gene ID 9412

**Other Names**

Mediator of RNA polymerase II transcription subunit 21, Mediator complex subunit 21, RNA polymerase II holoenzyme component SRB7, RNAPII complex component SRB7, hSrb7, MED21, SRB7, SURB7

**Target/Specificity**

SURB7 (AAH08380, 1 a.a. ~ 144 a.a) full-length recombinant protein with GST tag. MW of the GST tag alone is 26 KDa.

**Dilution**

WB~~1:500~1000

**Format**

Clear, colorless solution in phosphate buffered saline, pH 7.2 .

**Storage**

Store at -20°C or lower. Aliquot to avoid repeated freezing and thawing.

**Precautions**

SURB7 Antibody (monoclonal) (M05) is for research use only and not for use in diagnostic or therapeutic procedures.

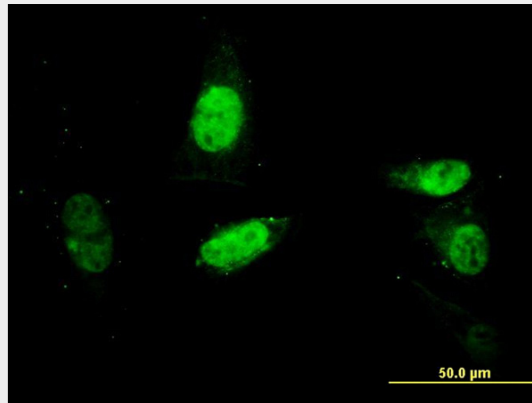
**SURB7 Antibody (monoclonal) (M05) - Protocols**

Provided below are standard protocols that you may find useful for product applications.

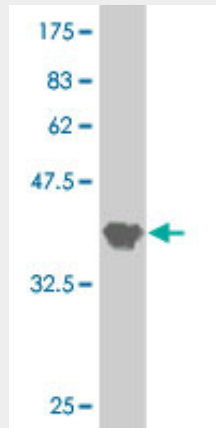
- [Western Blot](#)
- [Blocking Peptides](#)

- [Dot Blot](#)
- [Immunohistochemistry](#)
- [Immunofluorescence](#)
- [Immunoprecipitation](#)
- [Flow Cytometry](#)
- [Cell Culture](#)

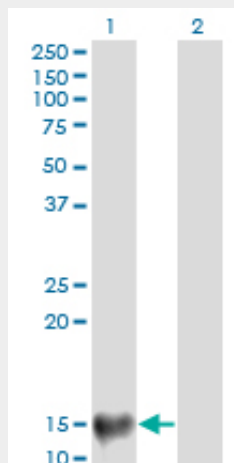
### SURB7 Antibody (monoclonal) (M05) - Images



Immunofluorescence of monoclonal antibody to SURB7 on HepG2 cell. [antibody concentration 35 ug/ml]



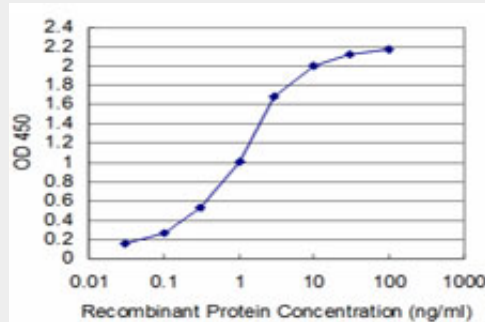
Antibody Reactive Against Recombinant Protein. Western Blot detection against Immunogen (41.58 KDa) .



Western Blot analysis of MED21 expression in transfected 293T cell line by SURB7 monoclonal antibody (M05), clone 4B5.

Lane 1: MED21 transfected lysate (Predicted MW: 15.6 KDa).

Lane 2: Non-transfected lysate.



Detection limit for recombinant GST tagged SURB7 is approximately 0.03ng/ml as a capture antibody.

### **SURB7 Antibody (monoclonal) (M05) - References**

MED1/TRAP220 exists predominantly in a TRAP/ Mediator subpopulation enriched in RNA polymerase II and is required for ER-mediated transcription. Zhang X, et al. Mol Cell, 2005 Jul 1. PMID 15989967. Nucleolar proteome dynamics. Andersen JS, et al. Nature, 2005 Jan 6. PMID 15635413. The status, quality, and expansion of the NIH full-length cDNA project: the Mammalian Gene Collection (MGC). Gerhard DS, et al. Genome Res, 2004 Oct. PMID 15489334. hSrb7, an essential human Mediator component, acts as a coactivator for the thyroid hormone receptor. Nevado J, et al. Mol Cell Endocrinol, 2004 Jul 30. PMID 15249124. A set of consensus mammalian mediator subunits identified by multidimensional protein identification technology. Sato S, et al. Mol Cell, 2004 Jun 4. PMID 15175163.