

## SUOX Antibody (monoclonal) (M01)

Mouse monoclonal antibody raised against a full length recombinant SUOX.

Catalog # AT4105a

### Specification

---

#### SUOX Antibody (monoclonal) (M01) - Product Information

Application	WB, E
Primary Accession	<a href="#">P51687</a>
Other Accession	<a href="#">BC065193</a>
Reactivity	Human
Host	mouse
Clonality	Monoclonal
Isotype	IgG1 Kappa
Calculated MW	60283

#### SUOX Antibody (monoclonal) (M01) - Additional Information

**Gene ID** 6821

#### Other Names

Sulfite oxidase, mitochondrial, SUOX

#### Target/Specificity

SUOX (AAH65193, 1 a.a. ~ 488 a.a) full-length recombinant protein with GST tag. MW of the GST tag alone is 26 KDa.

#### Dilution

WB~~1:500~1000

#### Format

Clear, colorless solution in phosphate buffered saline, pH 7.2 .

#### Storage

Store at -20°C or lower. Aliquot to avoid repeated freezing and thawing.

#### Precautions

SUOX Antibody (monoclonal) (M01) is for research use only and not for use in diagnostic or therapeutic procedures.

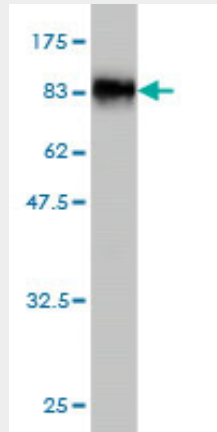
#### SUOX Antibody (monoclonal) (M01) - Protocols

Provided below are standard protocols that you may find useful for product applications.

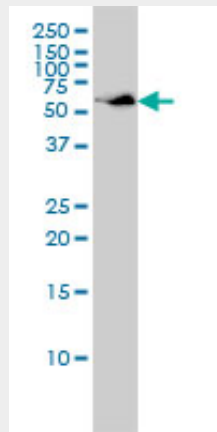
- [Western Blot](#)
- [Blocking Peptides](#)
- [Dot Blot](#)
- [Immunohistochemistry](#)

- [Immunofluorescence](#)
- [Immunoprecipitation](#)
- [Flow Cytometry](#)
- [Cell Culture](#)

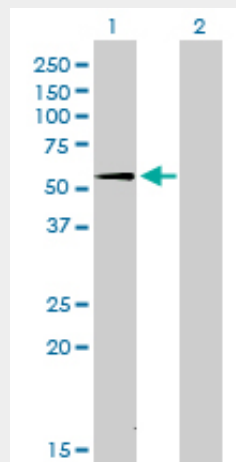
### SUOX Antibody (monoclonal) (M01) - Images



Antibody Reactive Against Recombinant Protein. Western Blot detection against Immunogen (79.42 KDa) .

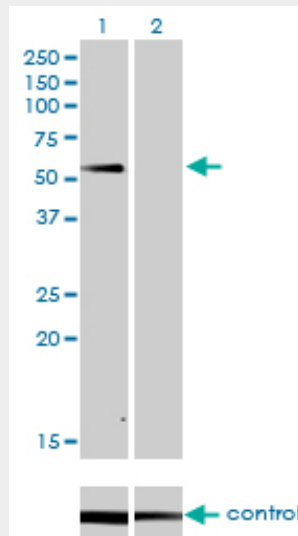


SUOX monoclonal antibody (M01), clone 1H1 Western Blot analysis of SUOX expression in HepG2 ( (Cat # AT4105a )

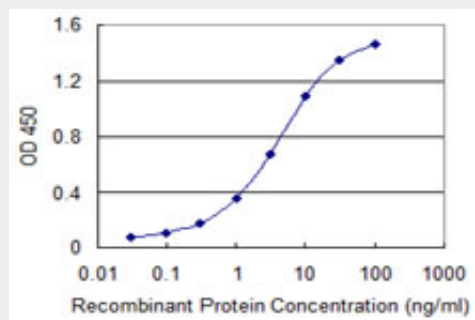


Western Blot analysis of SUOX expression in transfected 293T cell line by SUOX monoclonal antibody (M01), clone 1H1.

Lane 1: SUOX transfected lysate(53.9 KDa).  
Lane 2: Non-transfected lysate.



Western blot analysis of SUOX over-expressed 293 cell line, cotransfected with SUOX Validated Chimera RNAi ( Cat # AT4105a )



Detection limit for recombinant GST tagged SUOX is 0.03 ng/ml as a capture antibody.

### **SUOX Antibody (monoclonal) (M01) - Background**

Sulfite oxidase is a homodimeric protein localized to the intermembrane space of mitochondria. Each subunit contains a heme domain and a molybdopterin-binding domain. The enzyme catalyzes the oxidation of sulfite to sulfate, the final reaction in the oxidative degradation of the sulfur amino acids cysteine and methionine. Sulfite oxidase deficiency results in neurological abnormalities which are often fatal at an early age. Alternative splicing results in multiple transcript variants encoding identical proteins.

### **SUOX Antibody (monoclonal) (M01) - References**

1. Demonstration of autoantibodies to recombinant human sulphite oxidase in patients with chronic liver disorders and analysis of their clinical relevance. Preuss B, Berg C, Altenberend F, Gregor M, Stevanovic S, Klein R. Clin Exp Immunol. 2007 Oct 15;150(2):312-321. Epub 2007 Aug 17.