

## **STX5A Antibody (monoclonal) (M01)**

Mouse monoclonal antibody raised against a partial recombinant STX5A.

Catalog # AT4098a

### **Specification**

---

#### **STX5A Antibody (monoclonal) (M01) - Product Information**

Application	IF, WB, IHC, E
Primary Accession	<a href="#">O13190</a>
Other Accession	<a href="#">NM_003164.1</a>
Reactivity	Human
Host	mouse
Clonality	Monoclonal
Isotype	IgG1 Kappa
Calculated MW	39673

#### **STX5A Antibody (monoclonal) (M01) - Additional Information**

**Gene ID** 6811

#### **Other Names**

Syntaxin-5, STX5, STX5A

#### **Target/Specificity**

STX5A (NP\_003155.1, 1 a.a. ~ 100 a.a) partial recombinant protein with GST tag. MW of the GST tag alone is 26 KDa.

#### **Dilution**

WB ~ ~ 1:500 ~ 1000

#### **Format**

Clear, colorless solution in phosphate buffered saline, pH 7.2 .

#### **Storage**

Store at -20°C or lower. Aliquot to avoid repeated freezing and thawing.

#### **Precautions**

STX5A Antibody (monoclonal) (M01) is for research use only and not for use in diagnostic or therapeutic procedures.

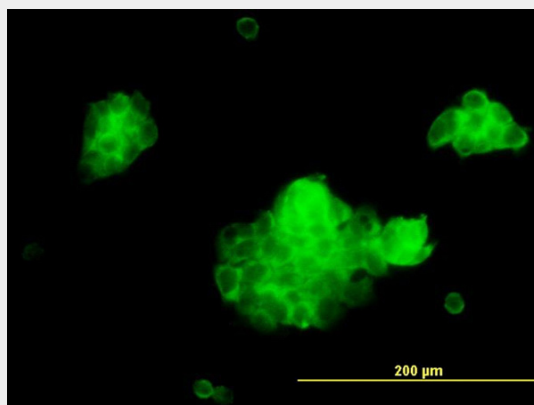
#### **STX5A Antibody (monoclonal) (M01) - Protocols**

Provided below are standard protocols that you may find useful for product applications.

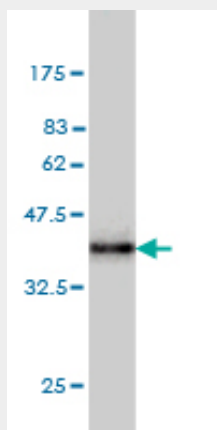
- [Western Blot](#)
- [Blocking Peptides](#)
- [Dot Blot](#)
- [Immunohistochemistry](#)

- [Immunofluorescence](#)
- [Immunoprecipitation](#)
- [Flow Cytometry](#)
- [Cell Culture](#)

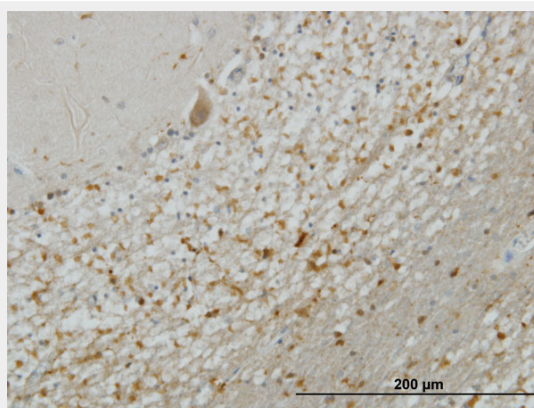
### STX5A Antibody (monoclonal) (M01) - Images



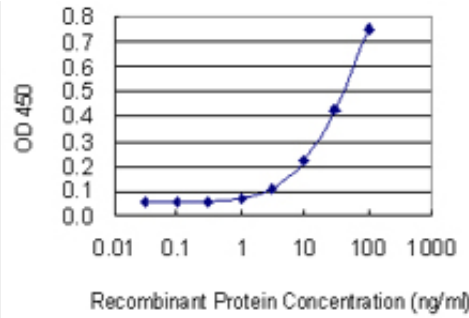
Immunofluorescence of monoclonal antibody to STX5A on A-431 cell. [antibody concentration 10 ug/ml]



Antibody Reactive Against Recombinant Protein. Western Blot detection against Immunogen (36.74 kDa) .



Immunoperoxidase of monoclonal antibody to STX5A on formalin-fixed paraffin-embedded human cerebellum. [antibody concentration 3 ug/ml]



Detection limit for recombinant GST tagged STX5 is 1 ng/ml as a capture antibody.

### STX5A Antibody (monoclonal) (M01) - References

Direct interaction between the COG complex and the SM protein, Sly1, is required for Golgi SNARE pairing. Laufman O, et al. EMBO J, 2009 Jul 22. PMID 19536132. Coordination of golgin tethering and SNARE assembly: GM130 binds syntaxin 5 in a p115-regulated manner. Diao A, et al. J Biol Chem, 2008 Mar 14. PMID 18167358. Toward a confocal subcellular atlas of the human proteome. Barbe L, et al. Mol Cell Proteomics, 2008 Mar. PMID 18029348. Syntaxin 16 and syntaxin 5 are required for efficient retrograde transport of several exogenous and endogenous cargo proteins. Amessou M, et al. J Cell Sci, 2007 Apr 15. PMID 17389686. Identification of intrahepatic cholangiocarcinoma related genes by comparison with normal liver tissues using expressed sequence tags. Wang AG, et al. Biochem Biophys Res Commun, 2006 Jul 7. PMID 16712791.