

STK6 Antibody (monoclonal) (M01)

Mouse monoclonal antibody raised against a partial recombinant STK6.

Catalog # AT4091a

Specification

STK6 Antibody (monoclonal) (M01) - Product Information

Application	IF, WB, IHC, E
Primary Accession	O14965
Other Accession	NM_198433
Reactivity	Human
Host	Mouse
Clonality	Monoclonal
Isotype	IgG2a Kappa
Calculated MW	45823

STK6 Antibody (monoclonal) (M01) - Additional Information

Gene ID 6790

Other Names

Aurora kinase A, Aurora 2, Aurora/IPL1-related kinase 1, ARK-1, Aurora-related kinase 1, hARK1, Breast tumor-amplified kinase, Serine/threonine-protein kinase 15, Serine/threonine-protein kinase 6, Serine/threonine-protein kinase aurora-A, AURKA

Target/Specificity

AURKA (NP_940835, 1 a.a. ~ 110 a.a) partial recombinant protein with GST tag. MW of the GST tag alone is 26 KDa.

Dilution

WB~~1:500~1000

Format

Clear, colorless solution in phosphate buffered saline, pH 7.2 .

Storage

Store at -20°C or lower. Aliquot to avoid repeated freezing and thawing.

Precautions

STK6 Antibody (monoclonal) (M01) is for research use only and not for use in diagnostic or therapeutic procedures.

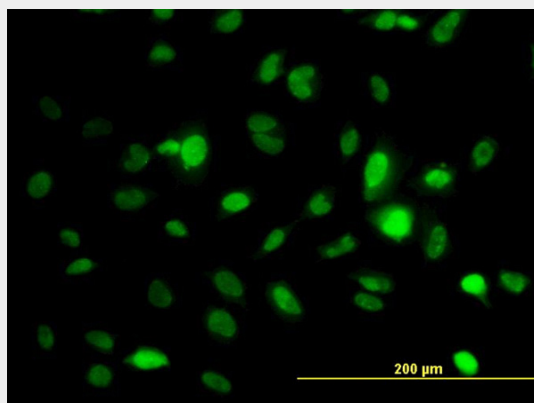
STK6 Antibody (monoclonal) (M01) - Protocols

Provided below are standard protocols that you may find useful for product applications.

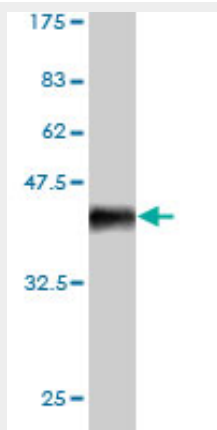
- [Western Blot](#)
- [Blocking Peptides](#)

- [Dot Blot](#)
- [Immunohistochemistry](#)
- [Immunofluorescence](#)
- [Immunoprecipitation](#)
- [Flow Cytometry](#)
- [Cell Culture](#)

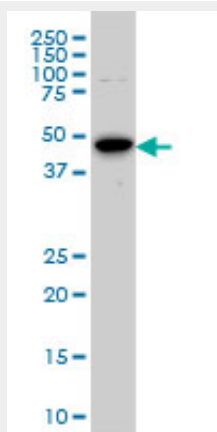
STK6 Antibody (monoclonal) (M01) - Images



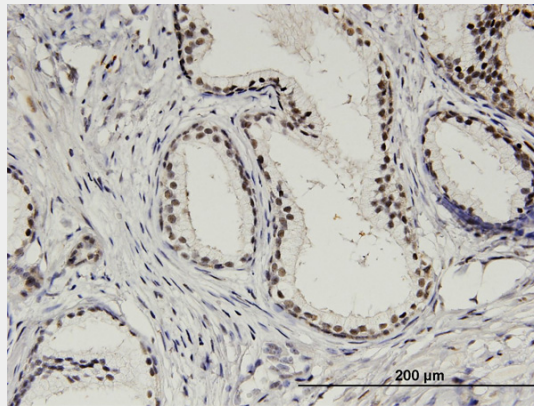
Immunofluorescence of monoclonal antibody to STK6 on HeLa cell. [antibody concentration 30 ug/ml]



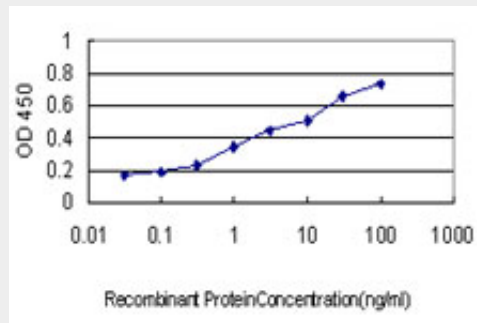
Antibody Reactive Against Recombinant Protein. Western Blot detection against Immunogen (37.84 KDa) .



STK6 monoclonal antibody (M01), clone 5F8 Western Blot analysis of STK6 expression in Hela S3 NE ((Cat # AT4091a)



Immunoperoxidase of monoclonal antibody to AURKA on formalin-fixed paraffin-embedded human prostate. [antibody concentration 6 ug/ml]



Detection limit for recombinant GST tagged STK6 is approximately 0.1ng/ml as a capture antibody.

STK6 Antibody (monoclonal) (M01) - Background

The protein encoded by this gene is a cell cycle-regulated kinase that appears to be involved in microtubule formation and/or stabilization at the spindle pole during chromosome segregation. The encoded protein is found at the centrosome in interphase cells and at the spindle poles in mitosis. This gene may play a role in tumor development and progression. A processed pseudogene of this gene has been found on chromosome 1, and an unprocessed pseudogene has been found on chromosome 10. Multiple transcript variants encoding the same protein have been found for this gene.

STK6 Antibody (monoclonal) (M01) - References

1. KIBRA Protein Phosphorylation Is Regulated by Mitotic Kinase Aurora and Protein Phosphatase 1. Xiao L, Chen Y, Ji M, Volle DJ, Lewis RE, Tsai MY, Dong J. *J Biol Chem.* 2011 Oct 21;286(42):36304-15. Epub 2011 Aug 30.
2. Aurora Kinase A expression is associated with lung cancer histological-subtypes and with tumor de-differentiation. Lo Iacono M, Monica V, Saviozzi S, Ceppi P, Bracco E, Papotti M, Scagliotti GV. *J Transl Med.* 2011 Jun 30;9:100.