

STIP1 Antibody (monoclonal) (M11)

Mouse monoclonal antibody raised against a partial recombinant STIP1.

Catalog # AT4077a

Specification

STIP1 Antibody (monoclonal) (M11) - Product Information

Application	IF, WB, IHC, E
Primary Accession	P31948
Other Accession	NM_006819
Reactivity	Human, Mouse, Rat
Host	mouse
Clonality	Monoclonal
Isotype	IgG2a Kappa
Calculated MW	62639

STIP1 Antibody (monoclonal) (M11) - Additional Information

Gene ID 10963

Other Names

Stress-induced-phosphoprotein 1, STI1, Hsc70/Hsp90-organizing protein, Hop, Renal carcinoma antigen NY-REN-11, Transformation-sensitive protein IEF SSP 3521, STIP1

Target/Specificity

STIP1 (NP_006810.1, 445 a.a. ~ 543 a.a) partial recombinant protein with GST tag. MW of the GST tag alone is 26 KDa.

Dilution

WB~~1:500~1000

Format

Clear, colorless solution in phosphate buffered saline, pH 7.2 .

Storage

Store at -20°C or lower. Aliquot to avoid repeated freezing and thawing.

Precautions

STIP1 Antibody (monoclonal) (M11) is for research use only and not for use in diagnostic or therapeutic procedures.

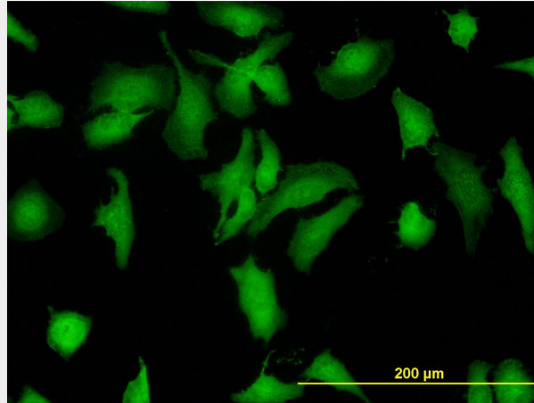
STIP1 Antibody (monoclonal) (M11) - Protocols

Provided below are standard protocols that you may find useful for product applications.

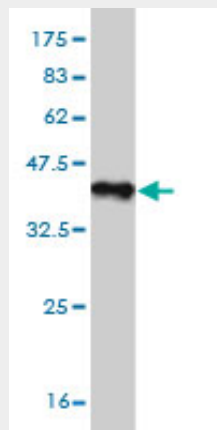
- [Western Blot](#)
- [Blocking Peptides](#)
- [Dot Blot](#)

- [Immunohistochemistry](#)
- [Immunofluorescence](#)
- [Immunoprecipitation](#)
- [Flow Cytometry](#)
- [Cell Culture](#)

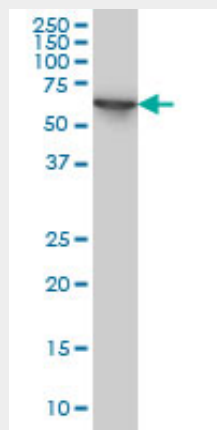
STIP1 Antibody (monoclonal) (M11) - Images



Immunofluorescence of monoclonal antibody to STIP1 on HeLa cell. [antibody concentration 10 ug/ml]

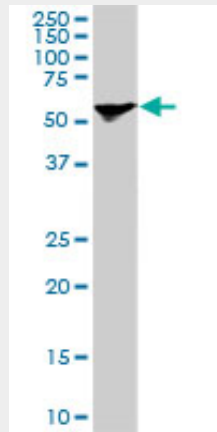


Antibody Reactive Against Recombinant Protein. Western Blot detection against Immunogen (36.63 KDa) .

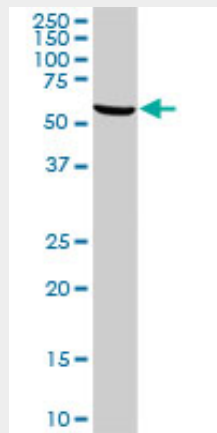


STIP1 monoclonal antibody (M11), clone 1E3 Western Blot analysis of STIP1 expression in HeLa (

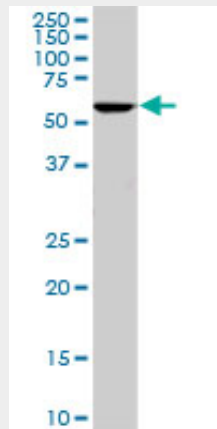
(Cat # AT4077a)



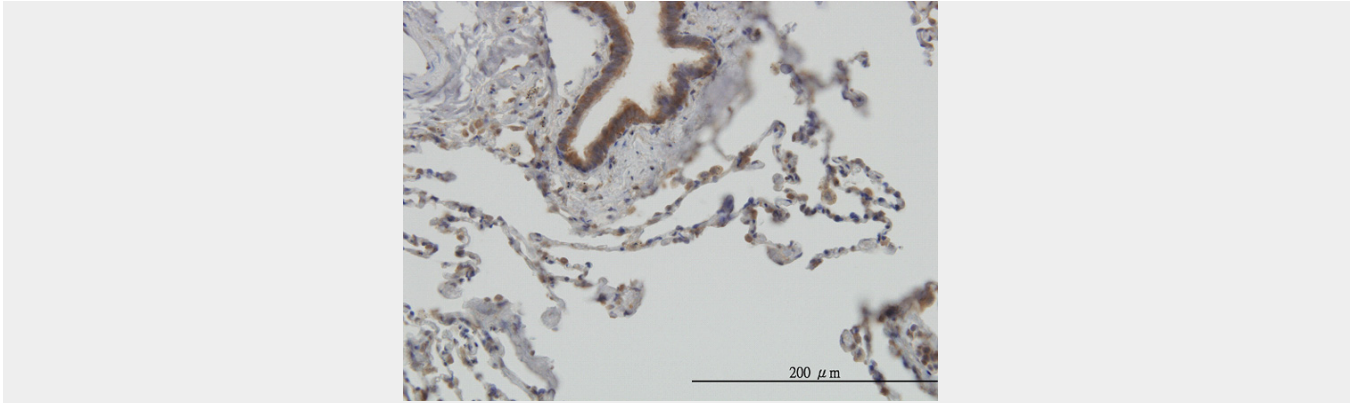
STIP1 monoclonal antibody (M11), clone 1E3. Western Blot analysis of STIP1 expression in PC-12 (Cat # AT4077a)



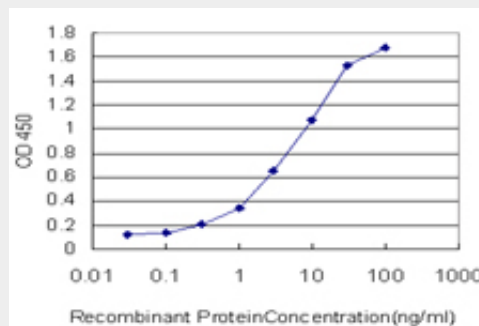
STIP1 monoclonal antibody (M11), clone 1E3. Western Blot analysis of STIP1 expression in Raw 264.7 (Cat # AT4077a)



STIP1 monoclonal antibody (M11), clone 1E3. Western Blot analysis of STIP1 expression in NIH/3T3 (Cat # AT4077a)



Immunoperoxidase of monoclonal antibody to STIP1 on formalin-fixed paraffin-embedded human lung. [antibody concentration 3 ug/ml]



Detection limit for recombinant GST tagged STIP1 is approximately 0.03ng/ml as a capture antibody.

STIP1 Antibody (monoclonal) (M11) - Background

STIP1 is an adaptor protein that coordinates the functions of HSP70 (see HSPA1A; MIM 140550) and HSP90 (see HSP90AA1; MIM 140571) in protein folding. It is thought to assist in the transfer of proteins from HSP70 to HSP90 by binding both HSP90 and substrate-bound HSP70. STIP1 also stimulates the ATPase activity of HSP70 and inhibits the ATPase activity of HSP90, suggesting that it regulates both the conformations and ATPase cycles of these chaperones (Song and Masison, 2005 [PubMed 16100115]).

STIP1 Antibody (monoclonal) (M11) - References

1. Glaucoma-associated WDR36 variants encode functional defects in a yeast model system. Footz TK, Johnson JL, Dubois S, Boivin N, Raymond V, Walter MA. Hum Mol Genet. 2009 Apr 1;18(7):1276-87. Epub 2009 Jan 15.