

**STCH Antibody (monoclonal) (M02)**

Mouse monoclonal antibody raised against a partial recombinant STCH.

Catalog # AT4073a

**Specification**

---

**STCH Antibody (monoclonal) (M02) - Product Information**

Application	IF, WB, E
Primary Accession	<a href="#">P48723</a>
Other Accession	<a href="#">NM_006948</a>
Reactivity	Human, Mouse
Host	mouse
Clonality	Monoclonal
Isotype	IgG2a Kappa
Calculated MW	51927

**STCH Antibody (monoclonal) (M02) - Additional Information****Gene ID** 6782**Other Names**

Heat shock 70 kDa protein 13, Microsomal stress-70 protein ATPase core, Stress-70 protein chaperone microsome-associated 60 kDa protein, HSPA13, STCH

**Target/Specificity**

STCH (NP\_008879.3, 375 a.a. ~ 470 a.a) partial recombinant protein with GST tag. MW of the GST tag alone is 26 kDa.

**Dilution**

WB~~1:500~1000

**Format**

Clear, colorless solution in phosphate buffered saline, pH 7.2 .

**Storage**

Store at -20°C or lower. Aliquot to avoid repeated freezing and thawing.

**Precautions**

STCH Antibody (monoclonal) (M02) is for research use only and not for use in diagnostic or therapeutic procedures.

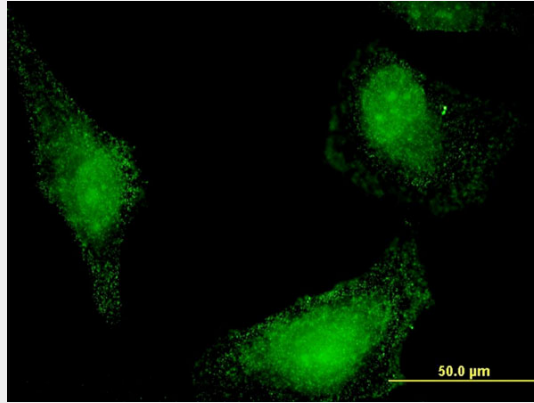
**STCH Antibody (monoclonal) (M02) - Protocols**

Provided below are standard protocols that you may find useful for product applications.

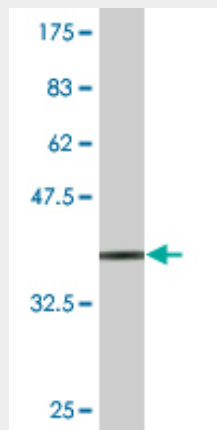
- [Western Blot](#)
- [Blocking Peptides](#)
- [Dot Blot](#)

- [Immunohistochemistry](#)
- [Immunofluorescence](#)
- [Immunoprecipitation](#)
- [Flow Cytometry](#)
- [Cell Culture](#)

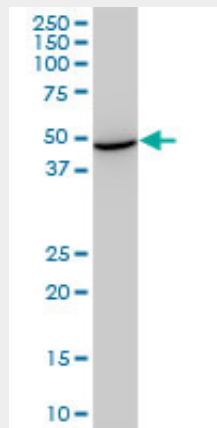
### STCH Antibody (monoclonal) (M02) - Images



Immunofluorescence of monoclonal antibody to HSPA13 on HeLa cell . [antibody concentration 10 ug/ml]

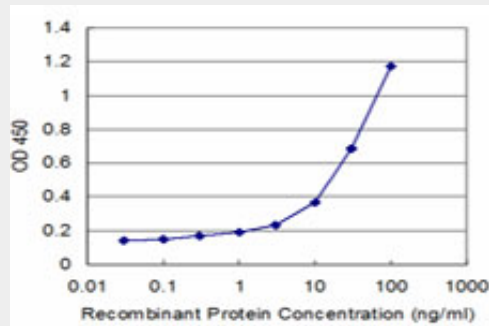


Antibody Reactive Against Recombinant Protein. Western Blot detection against Immunogen (36.3 KDa) .



STCH monoclonal antibody (M02), clone 1H8. Western Blot analysis of STCH expression in

NIH/3T3 ( (Cat # AT4073a )



Detection limit for recombinant GST tagged STCH is approximately 1ng/ml as a capture antibody.

### **STCH Antibody (monoclonal) (M02) - Background**

The protein encoded by this gene is a member of the heat shock protein 70 family and is found associated with microsomes. Members of this protein family play a role in the processing of cytosolic and secretory proteins, as well as in the removal of denatured or incorrectly-folded proteins. The encoded protein contains an ATPase domain and has been shown to associate with a ubiquitin-like protein.

### **STCH Antibody (monoclonal) (M02) - References**

Chemical manipulation of hsp70 ATPase activity regulates tau stability. Jinwal UK, et al. J Neurosci, 2009 Sep 30. PMID 19793966. New sequence variants associated with bone mineral density. Styrkarsdottir U, et al. Nat Genet, 2009 Jan. PMID 19079262. Stomach cancer-derived del223V-226L mutation of the STCH gene causes loss of sensitization to TRAIL-mediated apoptosis. Yamagata N, et al. Biochem Biophys Res Commun, 2008 Nov 21. PMID 18793616. A protein-protein interaction network for human inherited ataxias and disorders of Purkinje cell degeneration. Lim J, et al. Cell, 2006 May 19. PMID 16713569. Towards a proteome-scale map of the human protein-protein interaction network. Rual JF, et al. Nature, 2005 Oct 20. PMID 16189514.