

**STAT5B Antibody (monoclonal) (M01)**

Mouse monoclonal antibody raised against a full length recombinant STAT5B.

Catalog # AT4064a

**Specification**

---

**STAT5B Antibody (monoclonal) (M01) - Product Information**

Application	IF, WB
Primary Accession	<a href="#">P51692</a>
Other Accession	<a href="#">BC020868</a>
Reactivity	Human
Host	Mouse
Clonality	Monoclonal
Isotype	IgG1 kappa
Calculated MW	89866

**STAT5B Antibody (monoclonal) (M01) - Additional Information****Gene ID** 6777**Other Names**

Signal transducer and activator of transcription 5B, STAT5B

**Target/Specificity**

STAT5B (AAH20868, 1 a.a. ~ 390 a.a) full-length recombinant protein with GST tag. MW of the GST tag alone is 26 KDa.

**Dilution**

WB~~1:500~1000

**Format**

Clear, colorless solution in phosphate buffered saline, pH 7.2 .

**Storage**

Store at -20°C or lower. Aliquot to avoid repeated freezing and thawing.

**Precautions**

STAT5B Antibody (monoclonal) (M01) is for research use only and not for use in diagnostic or therapeutic procedures.

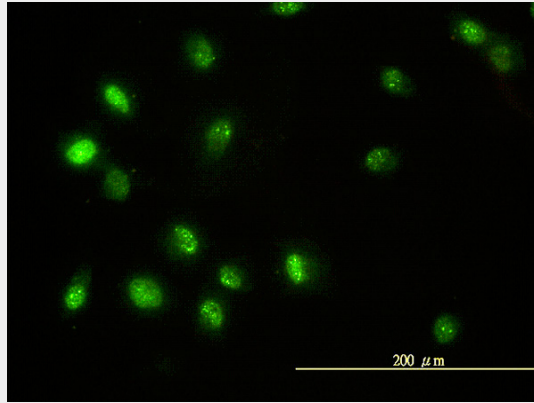
**STAT5B Antibody (monoclonal) (M01) - Protocols**

Provided below are standard protocols that you may find useful for product applications.

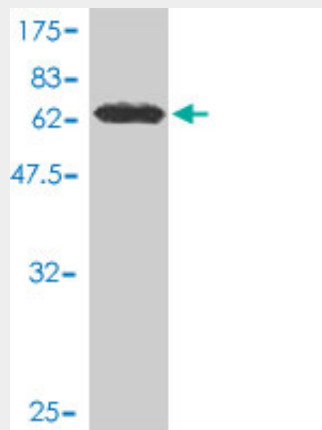
- [Western Blot](#)
- [Blocking Peptides](#)
- [Dot Blot](#)
- [Immunohistochemistry](#)

- [Immunofluorescence](#)
- [Immunoprecipitation](#)
- [Flow Cytometry](#)
- [Cell Culture](#)

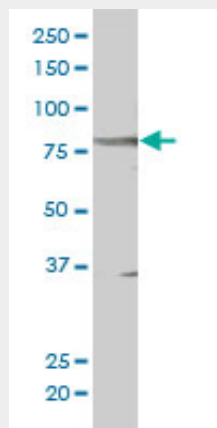
### STAT5B Antibody (monoclonal) (M01) - Images



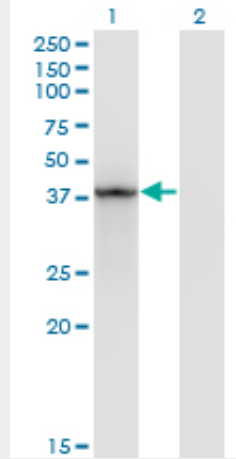
Immunofluorescence of monoclonal antibody to STAT5B on HeLa cell. [antibody concentration 10 ug/ml]



Antibody Reactive Against Recombinant Protein. Western Blot detection against Immunogen (68.42 KDa) .



STAT5B monoclonal antibody (M01), clone 1A1 Western Blot analysis of STAT5B expression in HeLa S3 NE ( (Cat # AT4064a )



Western Blot analysis of STAT5B expression in transfected 293T cell line by STAT5B monoclonal antibody (M01), clone 1A1.

Lane 1: STAT5B transfected lysate(44.9 KDa).

Lane 2: Non-transfected lysate.

### **STAT5B Antibody (monoclonal) (M01) - Background**

The protein encoded by this gene is a member of the STAT family of transcription factors. In response to cytokines and growth factors, STAT family members are phosphorylated by the receptor associated kinases, and then form homo- or heterodimers that translocate to the cell nucleus where they act as transcription activators. This protein mediates the signal transduction triggered by various cell ligands, such as IL2, IL4, CSF1, and different growth hormones. It has been shown to be involved in diverse biological processes, such as TCR signaling, apoptosis, adult mammary gland development, and sexual dimorphism of liver gene expression. This gene was found to fuse to retinoic acid receptor-alpha (RARA) gene in a small subset of acute promyelocytic leukemias (APLL). The dysregulation of the signaling pathways mediated by this protein may be the cause of the APLL.

### **STAT5B Antibody (monoclonal) (M01) - References**

Variation at the NFATC2 Locus Increases the Risk of Thiazolinedione-Induced Edema in the Diabetes REduction Assessment with ramipril and rosiglitazone Medication (DREAM) Study. Bailey SD, et al. *Diabetes Care*, 2010 Jul 13. PMID 20628086. JAK2V617F/STAT5 signaling pathway promotes cell proliferation through activation of Pituitary Tumor Transforming Gene 1 expression. Shen XL, et al. *Biochem Biophys Res Commun*, 2010 Aug 6. PMID 20621061. Polymorphisms in innate immunity genes and risk of childhood leukemia. Han S, et al. *Hum Immunol*, 2010 Jul. PMID 20438785. Deregulation of STAT-5 isoforms in the development of HPV-mediated cervical carcinogenesis. Sobti RC, et al. *J Recept Signal Transduct Res*, 2010 Jun. PMID 20415542. Risk of meningioma and common variation in genes related to innate immunity. Rajaraman P, et al. *Cancer Epidemiol Biomarkers Prev*, 2010 May. PMID 20406964.