

**SSB Antibody (monoclonal) (M01)**

Mouse monoclonal antibody raised against a full length recombinant SSB.

Catalog # AT4042a

**Specification**

---

**SSB Antibody (monoclonal) (M01) - Product Information**

Application	WB, IHC, E
Primary Accession	<a href="#">P05455</a>
Other Accession	<a href="#">BC001289</a>
Reactivity	Human
Host	mouse
Clonality	Monoclonal
Isotype	IgG1 kappa
Calculated MW	46837

**SSB Antibody (monoclonal) (M01) - Additional Information**

Gene ID 6741

**Other Names**

Lupus La protein, La autoantigen, La ribonucleoprotein, Sjogren syndrome type B antigen, SS-B, SSB

**Target/Specificity**

SSB (AAH01289, 1 a.a. ~ 408 a.a) full-length recombinant protein with GST tag. MW of the GST tag alone is 26 KDa.

**Dilution**

WB~~1:500~1000

**Format**

Clear, colorless solution in phosphate buffered saline, pH 7.2 .

**Storage**

Store at -20°C or lower. Aliquot to avoid repeated freezing and thawing.

**Precautions**

SSB Antibody (monoclonal) (M01) is for research use only and not for use in diagnostic or therapeutic procedures.

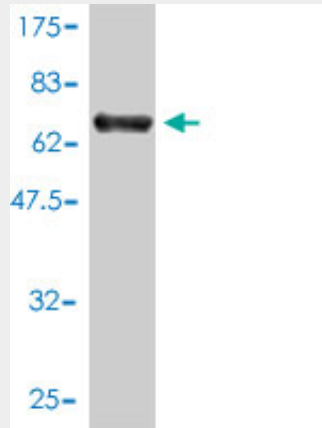
**SSB Antibody (monoclonal) (M01) - Protocols**

Provided below are standard protocols that you may find useful for product applications.

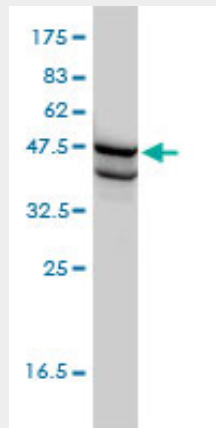
- [Western Blot](#)
- [Blocking Peptides](#)
- [Dot Blot](#)

- [Immunohistochemistry](#)
- [Immunofluorescence](#)
- [Immunoprecipitation](#)
- [Flow Cytometry](#)
- [Cell Culture](#)

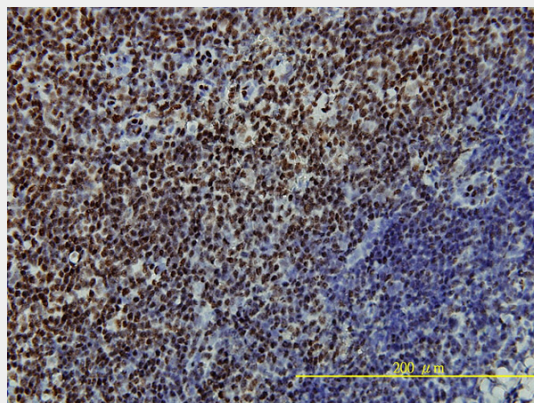
### SSB Antibody (monoclonal) (M01) - Images



Antibody Reactive Against Recombinant Protein. Western Blot detection against Immunogen (70.62 KDa) .

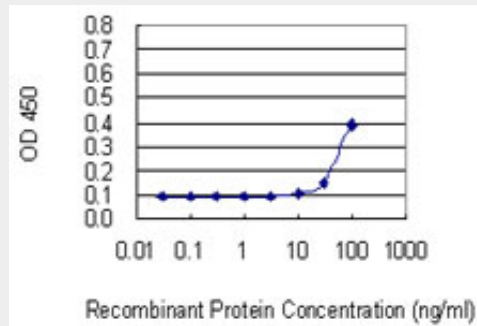


SSB monoclonal antibody (M01), clone 1D6-H5 Western Blot analysis of SSB expression in HL-60 ( Cat # AT4042a )



Immunoperoxidase of monoclonal antibody to SSB on formalin-fixed paraffin-embedded human

tonsil tissue. [antibody concentration 5 ug/ml]



Detection limit for recombinant GST tagged SSB is 10 ng/ml as a capture antibody.

### **SSB Antibody (monoclonal) (M01) - Background**

La is involved in diverse aspects of RNA metabolism, including binding and protecting 3-prime UUU(OH) elements of newly RNA polymerase III (see MIM 606007)-transcribed RNA, processing 5-prime and 3-prime ends of pre-tRNA precursors, acting as an RNA chaperone, and binding viral RNAs associated with hepatitis C virus. La protein was originally defined by its reactivity with autoantibodies from patients with Sjogren syndrome (MIM 270150) and systemic lupus erythematosus (SLE; MIM 152700) (Teplova et al., 2006 [PubMed 16387655]).

### **SSB Antibody (monoclonal) (M01) - References**

1. Phosphorylation of human La protein at Ser366 by casein kinase II contributes to hepatitis B virus replication and expression in vitro. Tang J, Zhang ZH, Huang M, Heise T, Zhang J, Liu GL. *Journal of Viral Hepatitis*, 2012 doi:10.1111/j.1365-2893.2012.01636.x. 2. Akt phosphorylation of La regulates specific mRNA translation in glial progenitors. Brenet F, Socci ND, Sonenberg N, Holland EC. *Oncogene*. 2009 Jan 8;28(1):128-39. Epub 2008 Oct 6.