

SPP1 Antibody (monoclonal) (M06)

Mouse monoclonal antibody raised against a full length recombinant SPP1.

Catalog # AT4028a

Specification

SPP1 Antibody (monoclonal) (M06) - Product Information

Application	WB, E
Primary Accession	P10451
Other Accession	BC007016
Reactivity	Human, Mouse
Host	mouse
Clonality	Monoclonal
Isotype	IgG2a Kappa
Calculated MW	35423

SPP1 Antibody (monoclonal) (M06) - Additional Information

Gene ID 6696

Other Names

Osteopontin, Bone sialoprotein 1, Nephropontin, Secreted phosphoprotein 1, SPP-1, Urinary stone protein, Uropontin, SPP1, BNSP, OPN

Target/Specificity

SPP1 (AAH07016.1, 1 a.a. ~ 300 a.a) full-length recombinant protein with GST tag. MW of the GST tag alone is 26 KDa.

Dilution

WB~~1:500~1000

Format

Clear, colorless solution in phosphate buffered saline, pH 7.2 .

Storage

Store at -20°C or lower. Aliquot to avoid repeated freezing and thawing.

Precautions

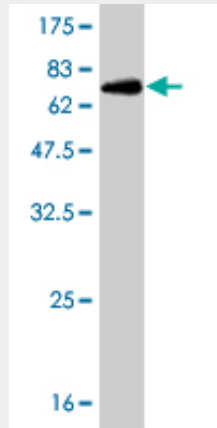
SPP1 Antibody (monoclonal) (M06) is for research use only and not for use in diagnostic or therapeutic procedures.

SPP1 Antibody (monoclonal) (M06) - Protocols

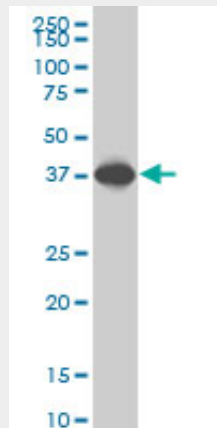
Provided below are standard protocols that you may find useful for product applications.

- [Western Blot](#)
- [Blocking Peptides](#)
- [Dot Blot](#)

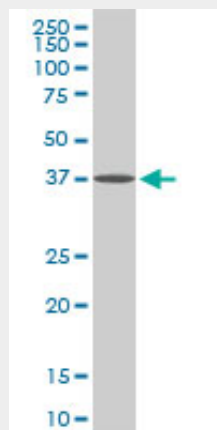
- [Immunohistochemistry](#)
- [Immunofluorescence](#)
- [Immunoprecipitation](#)
- [Flow Cytometry](#)
- [Cell Culture](#)

SPP1 Antibody (monoclonal) (M06) - Images

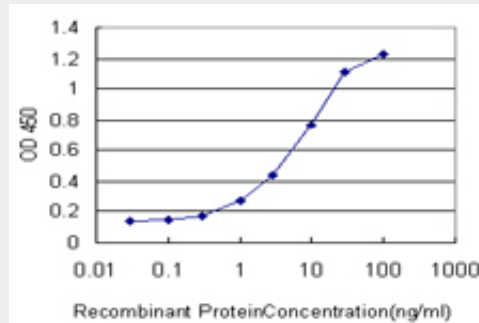
Antibody Reactive Against Recombinant Protein. Western Blot detection against Immunogen (58.74 KDa) .



SPP1 monoclonal antibody (M06), clone 3B11 Western Blot analysis of SPP1 expression in HeLa S3 NE ((Cat # AT4028a)



SPP1 monoclonal antibody (M06), clone 3B11. Western Blot analysis of SPP1 expression in NIH/3T3((Cat # AT4028a)



Detection limit for recombinant GST tagged SPP1 is approximately 0.3ng/ml as a capture antibody.

SPP1 Antibody (monoclonal) (M06) - References

Maternal genes and facial clefts in offspring: a comprehensive search for genetic associations in two population-based cleft studies from Scandinavia. Jugessur A, et al. PLoS One, 2010 Jul 9. PMID 20634891. Evaluation of candidate stromal epithelial cross-talk genes identifies association between risk of serous ovarian cancer and TERT, a cancer susceptibility hot-spot. Johnatty SE, et al. PLoS Genet, 2010 Jul 8. PMID 20628624. Variation at the NFATC2 Locus Increases the Risk of Thiazolinedione-Induced Edema in the Diabetes REduction Assessment with ramipril and rosiglitazone Medication (DREAM) Study. Bailey SD, et al. Diabetes Care, 2010 Jul 13. PMID 20628086. Nectin-like molecule 1 inhibits the migration and invasion of U251 glioma cells by regulating the expression of an extracellular matrix protein osteopontin. Yin B, et al. Chin Med Sci J, 2010 Jun. PMID 20598232. Osteopontin (OPN) expression in thyroid carcinoma. Briese J, et al. Anticancer Res, 2010 May. PMID 20592361.