

## **SPI1 Antibody (monoclonal) (M02)**

Mouse monoclonal antibody raised against a partial recombinant SPI1.

Catalog # AT4022a

### **Specification**

---

#### **SPI1 Antibody (monoclonal) (M02) - Product Information**

Application	IF, WB, E
Primary Accession	<a href="#">P17947</a>
Other Accession	<a href="#">NM_003120</a>
Reactivity	Human, Mouse
Host	mouse
Clonality	Monoclonal
Isotype	IgG1 Kappa
Calculated MW	31083

#### **SPI1 Antibody (monoclonal) (M02) - Additional Information**

**Gene ID** 6688

##### **Other Names**

Transcription factor PU1, 31 kDa-transforming protein, SPI1

##### **Target/Specificity**

SPI1 (NP\_003111, 1 a.a. ~ 120 a.a) partial recombinant protein with GST tag. MW of the GST tag alone is 26 KDa.

##### **Dilution**

WB~~1:500~1000

##### **Format**

Clear, colorless solution in phosphate buffered saline, pH 7.2 .

##### **Storage**

Store at -20°C or lower. Aliquot to avoid repeated freezing and thawing.

##### **Precautions**

SPI1 Antibody (monoclonal) (M02) is for research use only and not for use in diagnostic or therapeutic procedures.

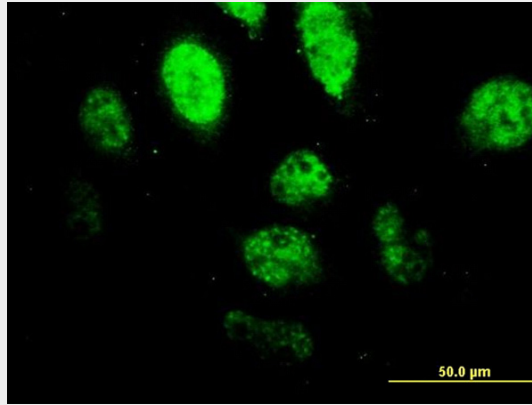
#### **SPI1 Antibody (monoclonal) (M02) - Protocols**

Provided below are standard protocols that you may find useful for product applications.

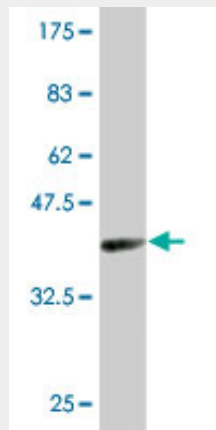
- [Western Blot](#)
- [Blocking Peptides](#)
- [Dot Blot](#)
- [Immunohistochemistry](#)

- [Immunofluorescence](#)
- [Immunoprecipitation](#)
- [Flow Cytometry](#)
- [Cell Culture](#)

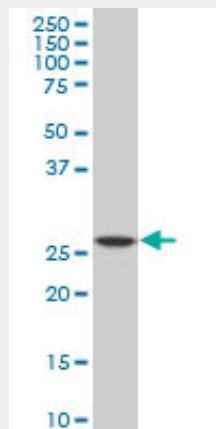
### SPI1 Antibody (monoclonal) (M02) - Images



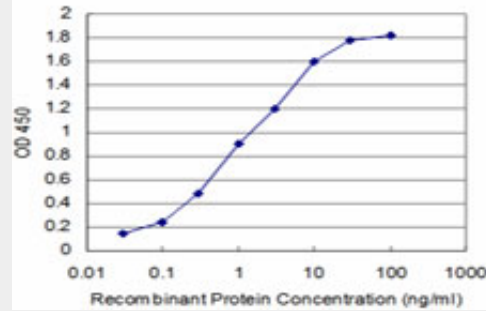
Immunofluorescence of monoclonal antibody to SPI1 on HeLa cell. [antibody concentration 10 ug/ml]



Antibody Reactive Against Recombinant Protein. Western Blot detection against Immunogen (38.94 KDa) .



SPI1 monoclonal antibody (M02), clone 2G1. Western Blot analysis of SPI1 expression in Raw 264.7.



Detection limit for recombinant GST tagged SPI1 is approximately 0.1ng/ml as a capture antibody.

### **SPI1 Antibody (monoclonal) (M02) - Background**

This gene encodes an ETS-domain transcription factor that activates gene expression during myeloid and B-lymphoid cell development. The nuclear protein binds to a purine-rich sequence known as the PU-box found near the promoters of target genes, and regulates their expression in coordination with other transcription factors and cofactors. The protein can also regulate alternative splicing of target genes. Multiple transcript variants encoding different isoforms have been found for this gene.

### **SPI1 Antibody (monoclonal) (M02) - References**

PU.1 is regulated by NF-kappaB through a novel binding site in a 17 kb upstream enhancer element. Bonadies N, et al. *Oncogene*, 2010 Feb 18. PMID 19966852. Heterozygous deletion of the PU.1 locus in human AML. Bonadies N, et al. *Blood*, 2010 Jan 14. PMID 19890096. PU.1 regulates positive regulatory domain I-binding factor 1/Blimp-1 transcription in lymphoma cells. Desai S, et al. *J Immunol*, 2009 Nov 1. PMID 19828640. PU.1 activation relieves GATA-1-mediated repression of Cebpa and Cbfb during leukemia differentiation. Burda P, et al. *Mol Cancer Res*, 2009 Oct. PMID 19825991. PU.1 induces apoptosis in myeloma cells through direct transactivation of TRAIL. Ueno S, et al. *Oncogene*, 2009 Nov 19. PMID 19749795.