

SP1 Antibody (monoclonal) (M02)
Mouse monoclonal antibody raised against a partial recombinant SP1.
Catalog # AT4004a

Specification

SP1 Antibody (monoclonal) (M02) - Product Information

Application	IF, WB, IHC, E
Primary Accession	P08047
Other Accession	NM_138473
Reactivity	Human, Mouse
Host	Mouse
Clonality	Monoclonal
Isotype	IgG1
Calculated MW	80693

SP1 Antibody (monoclonal) (M02) - Additional Information

Gene ID 6667

Other Names

Transcription factor Sp1, SP1, TSFP1

Target/Specificity

SP1 (NP_612482, 89 a.a. ~ 198 a.a) partial recombinant protein with GST tag. MW of the GST tag alone is 26 KDa.

Dilution

WB~~1:500~1000

Format

Clear, colorless solution in phosphate buffered saline, pH 7.2 .

Storage

Store at -20°C or lower. Aliquot to avoid repeated freezing and thawing.

Precautions

SP1 Antibody (monoclonal) (M02) is for research use only and not for use in diagnostic or therapeutic procedures.

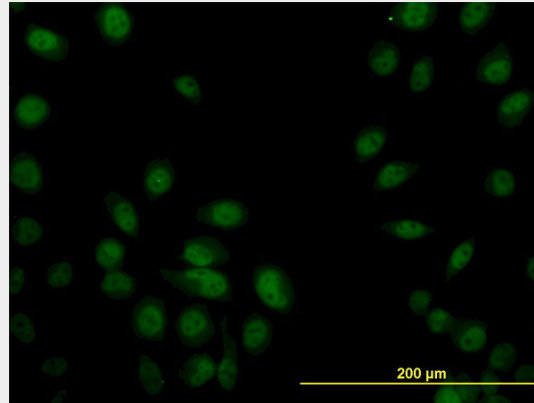
SP1 Antibody (monoclonal) (M02) - Protocols

Provided below are standard protocols that you may find useful for product applications.

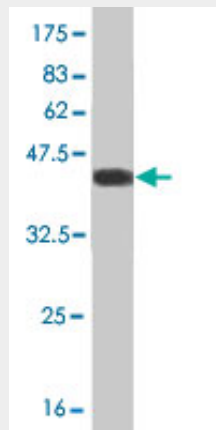
- [Western Blot](#)
- [Blocking Peptides](#)
- [Dot Blot](#)
- [Immunohistochemistry](#)

- [Immunofluorescence](#)
- [Immunoprecipitation](#)
- [Flow Cytometry](#)
- [Cell Culture](#)

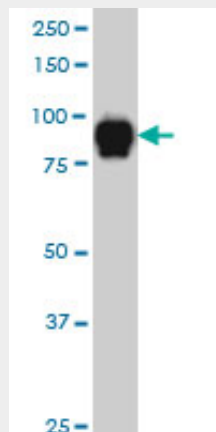
SP1 Antibody (monoclonal) (M02) - Images



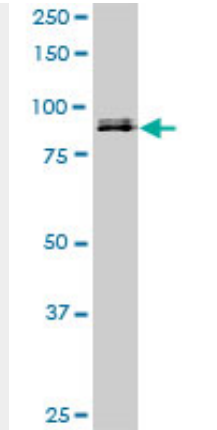
Immunofluorescence of monoclonal antibody to SP1 on HeLa cell. [antibody concentration 10 ug/ml]



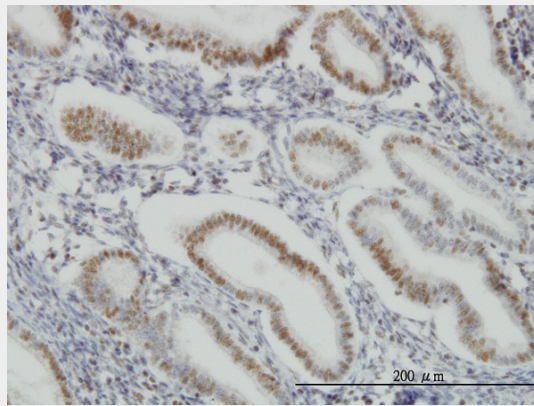
Antibody Reactive Against Recombinant Protein. Western Blot detection against Immunogen (37.84 KDa) .



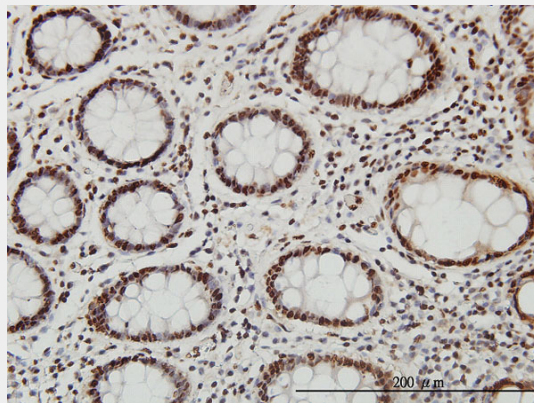
SP1 monoclonal antibody (M02), clone 1A5 Western Blot analysis of SP1 expression in HeLa S3 NE ((Cat # AT4004a)



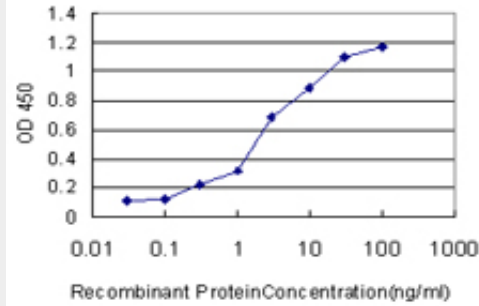
SP1 monoclonal antibody (M02), clone 1A5. Western Blot analysis of SP1 expression in NIH/3T3 (Cat # AT4004a)



Immunoperoxidase of monoclonal antibody to SP1 on formalin-fixed paraffin-embedded human endometrium. [antibody concentration 1 ug/ml]



Immunoperoxidase of monoclonal antibody to SP1 on formalin-fixed paraffin-embedded human colon. [antibody concentration 1 ug/ml]



Detection limit for recombinant GST tagged SP1 is approximately 0.1ng/ml as a capture antibody.

SP1 Antibody (monoclonal) (M02) - References

Inhibition of NFkappaB and pancreatic cancer cell and tumor growth by curcumin is dependent on specificity protein down-regulation. Jutooru I, et al. J Biol Chem, 2010 Aug 13. PMID 20538607. Sp1 binds to the external promoter of the p73 gene and induces the expression of TAp73gamma in lung cancer. Logotheti S, et al. FEBS J, 2010 Jul. PMID 20528922. Regulation of plasma-membrane-associated sialidase NEU3 gene by Sp1/Sp3 transcription factors. Yamaguchi K, et al. Biochem J, 2010 Aug 15. PMID 20518744. Transcription factor Sp1 regulates expression of cancer-associated molecule CD147 in human lung cancer. Kong LM, et al. Cancer Sci, 2010 Jun. PMID 20384626. HDAC4 inhibits the transcriptional activation of mda-7/IL-24 induced by Sp1. Pan L, et al. Cell Mol Immunol, 2010 May. PMID 20383178.