

## **SNAP25 Antibody (monoclonal) (M01)**

Mouse monoclonal antibody raised against a partial recombinant SNAP25.

Catalog # AT3972a

### **Specification**

---

#### **SNAP25 Antibody (monoclonal) (M01) - Product Information**

Application	WB, E
Primary Accession	<a href="#">P60880</a>
Other Accession	<a href="#">BC010647</a>
Reactivity	Human
Host	mouse
Clonality	Monoclonal
Isotype	IgG1 Kappa
Calculated MW	23315

#### **SNAP25 Antibody (monoclonal) (M01) - Additional Information**

**Gene ID** 6616

##### **Other Names**

Synaptosomal-associated protein 25, SNAP-25, Super protein, SUP, Synaptosomal-associated 25 kDa protein, SNAP25, SNAP

##### **Target/Specificity**

SNAP25 (AAH10647, 31 a.a. ~ 130 a.a) partial recombinant protein with GST tag. MW of the GST tag alone is 26 kDa.

##### **Dilution**

WB~~1:500~1000

##### **Format**

Clear, colorless solution in phosphate buffered saline, pH 7.2 .

##### **Storage**

Store at -20°C or lower. Aliquot to avoid repeated freezing and thawing.

##### **Precautions**

SNAP25 Antibody (monoclonal) (M01) is for research use only and not for use in diagnostic or therapeutic procedures.

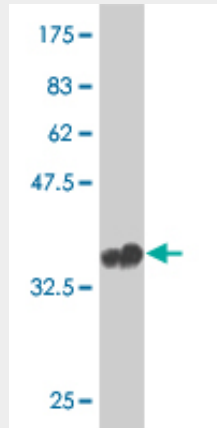
#### **SNAP25 Antibody (monoclonal) (M01) - Protocols**

Provided below are standard protocols that you may find useful for product applications.

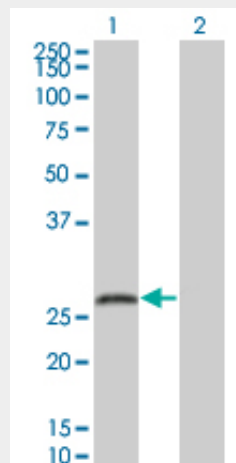
- [Western Blot](#)
- [Blocking Peptides](#)
- [Dot Blot](#)

- [Immunohistochemistry](#)
- [Immunofluorescence](#)
- [Immunoprecipitation](#)
- [Flow Cytometry](#)
- [Cell Culture](#)

### SNAP25 Antibody (monoclonal) (M01) - Images



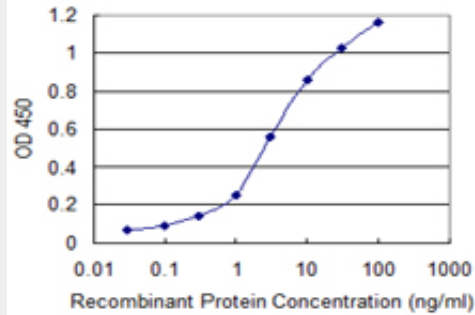
Antibody Reactive Against Recombinant Protein. Western Blot detection against Immunogen (36.63 KDa) .



Western Blot analysis of SNAP25 expression in transfected 293T cell line by SNAP25 monoclonal antibody (M01), clone 4A3.

Lane 1: SNAP25 transfected lysate(23.315 KDa).

Lane 2: Non-transfected lysate.



Detection limit for recombinant GST tagged SNAP25 is 0.03 ng/ml as a capture antibody.

### **SNAP25 Antibody (monoclonal) (M01) - Background**

Synaptic vesicle membrane docking and fusion is mediated by SNAREs (soluble N-ethylmaleimide-sensitive factor attachment protein receptors) located on the vesicle membrane (v-SNAREs) and the target membrane (t-SNAREs). The assembled v-SNARE/t-SNARE complex consists of a bundle of four helices, one of which is supplied by v-SNARE and the other three by t-SNARE. For t-SNAREs on the plasma membrane, the protein syntaxin supplies one helix and the protein encoded by this gene contributes the other two. Therefore, this gene product is a presynaptic plasma membrane protein involved in the regulation of neurotransmitter release. Two alternative transcript variants encoding different protein isoforms have been described for this gene.

### **SNAP25 Antibody (monoclonal) (M01) - References**

Association Among SNAP-25 Gene Ddel and MnlI Polymorphisms and Hemodynamic Changes During Methylphenidate Use: A Functional Near-Infrared Spectroscopy Study. Oner O, et al. J Atten Disord, 2010 Aug 2. PMID 20679152. An approach based on a genome-wide association study reveals candidate loci for narcolepsy. Shimada M, et al. Hum Genet, 2010 Oct. PMID 20677014. An association study between SNAP-25 gene and Attention-Deficit Hyperactivity Disorder. Zhang H, et al. Eur J Paediatr Neurol, 2010 Jul 2. PMID 20599404. Personalized smoking cessation: interactions between nicotine dose, dependence and quit-success genotype score. Rose JE, et al. Mol Med, 2010 Jul-Aug. PMID 20379614. Association between a synaptosomal protein (SNAP-25) gene polymorphism and verbal memory and attention in patients with endogenous psychoses and mentally healthy subjects. Golimbet VE, et al. Neurosci Behav Physiol, 2010 May. PMID 20333500.