

## **SMURF1 Antibody (monoclonal) (M01)**

Mouse monoclonal antibody raised against a partial recombinant SMURF1.

Catalog # AT3966a

### **Specification**

---

#### **SMURF1 Antibody (monoclonal) (M01) - Product Information**

|                   |                           |
|-------------------|---------------------------|
| Application       | IF, IP, WB, IHC, E        |
| Primary Accession | <a href="#">O9HCE7</a>    |
| Other Accession   | <a href="#">NM_020429</a> |
| Reactivity        | Human                     |
| Host              | mouse                     |
| Clonality         | Monoclonal                |
| Isotype           | IgG2a Kappa               |
| Calculated MW     | 86114                     |

#### **SMURF1 Antibody (monoclonal) (M01) - Additional Information**

**Gene ID** 57154

##### **Other Names**

E3 ubiquitin-protein ligase SMURF1, hSMURF1, 632-, SMAD ubiquitination regulatory factor 1, SMAD-specific E3 ubiquitin-protein ligase 1, SMURF1, KIAA1625

##### **Target/Specificity**

SMURF1 (NP\_065162, 165 a.a. ~ 268 a.a) partial recombinant protein with GST tag. MW of the GST tag alone is 26 KDa.

##### **Dilution**

WB~~1:500~1000

##### **Format**

Clear, colorless solution in phosphate buffered saline, pH 7.2 .

##### **Storage**

Store at -20°C or lower. Aliquot to avoid repeated freezing and thawing.

##### **Precautions**

SMURF1 Antibody (monoclonal) (M01) is for research use only and not for use in diagnostic or therapeutic procedures.

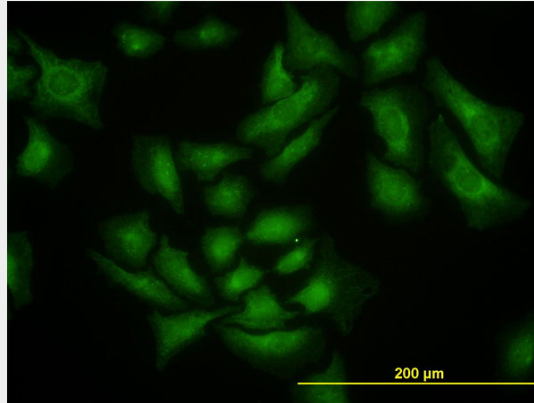
#### **SMURF1 Antibody (monoclonal) (M01) - Protocols**

Provided below are standard protocols that you may find useful for product applications.

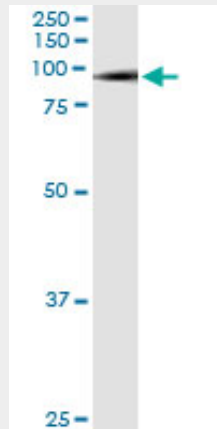
- [Western Blot](#)
- [Blocking Peptides](#)
- [Dot Blot](#)

- [Immunohistochemistry](#)
- [Immunofluorescence](#)
- [Immunoprecipitation](#)
- [Flow Cytometry](#)
- [Cell Culture](#)

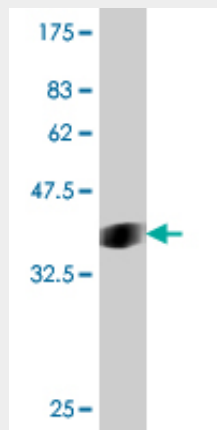
### SMURF1 Antibody (monoclonal) (M01) - Images



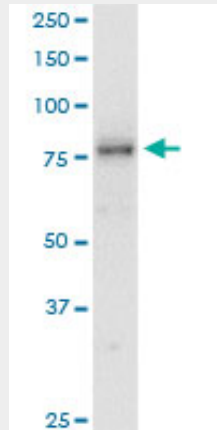
Immunofluorescence of monoclonal antibody to SMURF1 on HeLa cell. [antibody concentration 10 ug/ml]



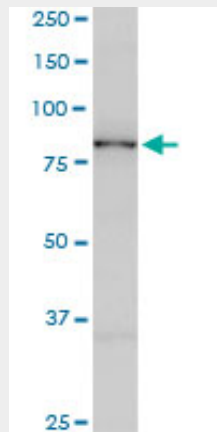
Immunoprecipitation of SMURF1 transfected lysate using anti-SMURF1 monoclonal antibody and Protein A Magnetic Bead ([U0007](#)), and immunoblotted with SMURF1 MaxPab rabbit polyclonal antibody.



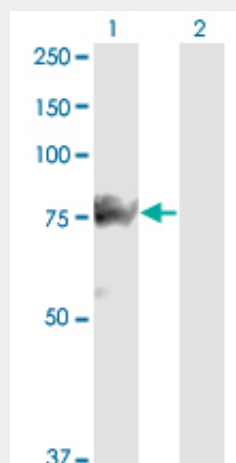
Antibody Reactive Against Recombinant Protein. Western Blot detection against Immunogen (37.18 KDa) .



SMURF1 monoclonal antibody (M01), clone 1D7. Western Blot analysis of SMURF1 expression in HeLa.



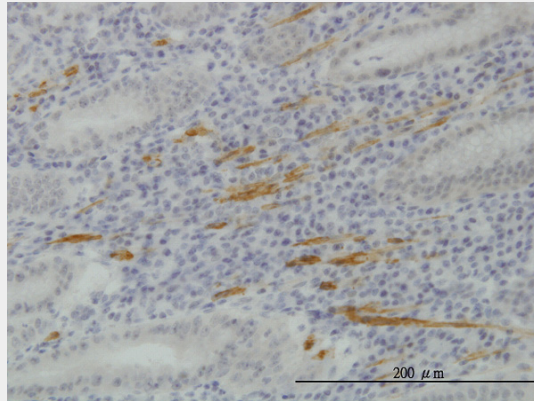
SMURF1 monoclonal antibody (M01), clone 1D7. Western Blot analysis of SMURF1 expression in HepG2.



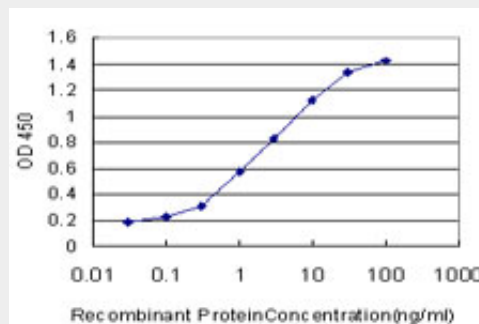
Western Blot analysis of SMURF1 expression in transfected 293T cell line by SMURF1 monoclonal antibody (M01), clone 1D7.

Lane 1: SMURF1 transfected lysate(83.4 KDa).

Lane 2: Non-transfected lysate.



Immunoperoxidase of monoclonal antibody to SMURF1 on formalin-fixed paraffin-embedded human stomach. [antibody concentration 2 ug/ml]



Detection limit for recombinant GST tagged SMURF1 is approximately 0.1ng/ml as a capture antibody.

### SMURF1 Antibody (monoclonal) (M01) - Background

This gene encodes a ubiquitin ligase that is specific for receptor-regulated SMAD proteins in the bone morphogenetic protein (BMP) pathway. A similar protein in *Xenopus* is involved in embryonic pattern formation. Alternative splicing results in multiple transcript variants encoding different isoforms. An additional transcript variant has been identified, but its full length sequence has not been determined.

### SMURF1 Antibody (monoclonal) (M01) - References

1. Impaired phosphorylation and ubiquitination by P70 S6 kinase (P70S6K) and Smad ubiquitination regulatory factor 1 (Smurf1) promotes Tribbles homolog 2 (TRIB2) stability and carcinogenic property in liver cancer. Wang J, Zhang Y, Weng W, Qiao Y, Ma L, Xiao W, Yu Y, Pan Q, Sun FJ *Biol Chem*. 2013 Oct 2.
2. Smurf1 ubiquitin ligase causes downregulation of BMP receptors and is induced in monocrotaline and hypoxia models of pulmonary arterial hypertension. Murakami K, Mathew R, Huang J, Farahani R, Peng H, Olson SC, Etlinger JD. *Exp Biol Med* (Maywood). 2010 Jul 1;235(7):805-13.