

SMC6L1 Antibody (monoclonal) (M01)

Mouse monoclonal antibody raised against a partial recombinant SMC6L1.

Catalog # AT3956a

Specification

SMC6L1 Antibody (monoclonal) (M01) - Product Information

Application	WB, IHC, E
Primary Accession	O96SB8
Other Accession	BC039828
Reactivity	Human
Host	mouse
Clonality	Monoclonal
Isotype	IgG2a Kappa
Calculated MW	126326

SMC6L1 Antibody (monoclonal) (M01) - Additional Information

Gene ID 79677

Other Names

Structural maintenance of chromosomes protein 6, SMC protein 6, SMC-6, hSMC6, SMC6, SMC6L1

Target/Specificity

SMC6L1 (AAH39828, 1 a.a. ~ 110 a.a) partial recombinant protein with GST tag. MW of the GST tag alone is 26 KDa.

Dilution

WB~~1:500~1000

Format

Clear, colorless solution in phosphate buffered saline, pH 7.2 .

Storage

Store at -20°C or lower. Aliquot to avoid repeated freezing and thawing.

Precautions

SMC6L1 Antibody (monoclonal) (M01) is for research use only and not for use in diagnostic or therapeutic procedures.

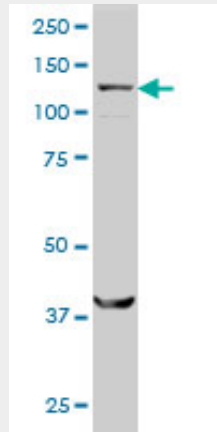
SMC6L1 Antibody (monoclonal) (M01) - Protocols

Provided below are standard protocols that you may find useful for product applications.

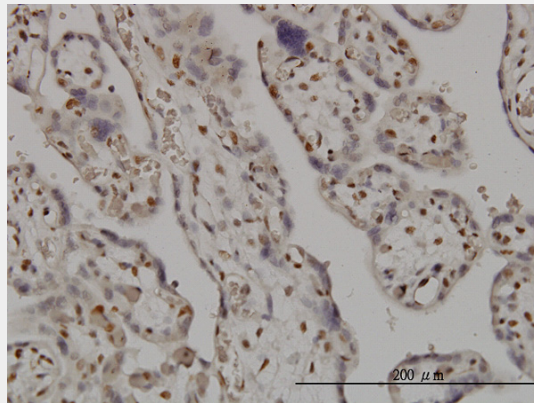
- [Western Blot](#)
- [Blocking Peptides](#)
- [Dot Blot](#)
- [Immunohistochemistry](#)

- [Immunofluorescence](#)
- [Immunoprecipitation](#)
- [Flow Cytometry](#)
- [Cell Culture](#)

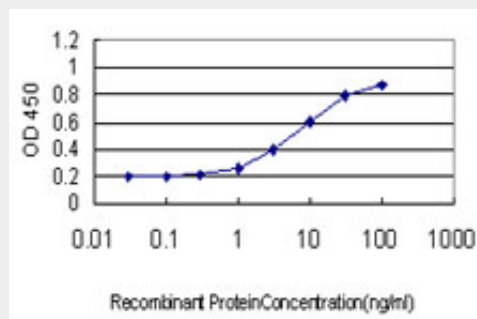
SMC6L1 Antibody (monoclonal) (M01) - Images



SMC6L1 monoclonal antibody (M01), clone 2E6 Western Blot analysis of SMC6L1 expression in HeLa (Cat # AT3956a).



Immunoperoxidase of monoclonal antibody to SMC6L1 on formalin-fixed paraffin-embedded human placenta. [antibody concentration 3 ug/ml]



Detection limit for recombinant GST tagged SMC6L1 is approximately 0.3ng/ml as a capture antibody.

SMC6L1 Antibody (monoclonal) (M01) - References

1. Smc5/6-mediated regulation of replication progression contributes to chromosome assembly

during mitosis in human cells. Gallego-Paez LM, Tanaka H, Bando M, Takahashi M, Nozaki N, Nakato R, Shirahige K, Hirota T. *Mol Biol Cell*. 2014 Jan;25(2):302-17. doi: 10.1091/mbc.E13-01-0020. Epub 2013 Nov 20.

SMC6L1 Antibody (monoclonal) (M01) - Citations

- [β-Cyclodextrin/dialdehyde glucan-coated keratin nanoparticles for oral delivery of insulin](#)
- [SLF2 Interacts with the SMC5/6 Complex to Direct Hepatitis B Virus Episomal DNA to Promyelocytic Leukemia Bodies for Transcriptional Repression](#)
- [PARP inhibitors and radiation potentiate liver cell death in vitro. Do hepatocellular carcinomas have an achilles' heel?](#)
- [E3 ubiquitin ligase TRIM21 restricts hepatitis B virus replication by targeting HBx for proteasomal degradation](#)
- [Hypoxic gene expression in chronic hepatitis B virus infected patients is not observed in state-of-the-art in vitro and mouse infection models](#)
- [Spatiotemporal Analysis of Hepatitis B Virus X Protein in Primary Human Hepatocytes](#)
- [Hepatitis B Virus X Protein Function Requires Zinc Binding](#)
- [The Smc5/6 Complex Restricts HBV when Localized to ND10 without Inducing an Innate Immune Response and Is Counteracted by the HBV X Protein Shortly after Infection](#)
- [Hepatitis B Virus X Protein Promotes Degradation of SMC5/6 to Enhance HBV Replication](#)