

## **SMARCD3 Antibody (monoclonal) (M01)**

Mouse monoclonal antibody raised against a partial recombinant SMARCD3.

Catalog # AT3954a

### **Specification**

---

#### **SMARCD3 Antibody (monoclonal) (M01) - Product Information**

Application	IF, WB, E
Primary Accession	<a href="#">O6STE5</a>
Other Accession	<a href="#">NM_001003801</a>
Reactivity	Human
Host	mouse
Clonality	Monoclonal
Isotype	IgG2a Kappa
Calculated MW	55016

#### **SMARCD3 Antibody (monoclonal) (M01) - Additional Information**

**Gene ID** 6604

##### **Other Names**

SWI/SNF-related matrix-associated actin-dependent regulator of chromatin subfamily D member 3, 60 kDa BRG-1/Brm-associated factor subunit C, BRG1-associated factor 60C, BAF60C, SMARCD3, BAF60C

##### **Target/Specificity**

SMARCD3 (NP\_001003801, 385 a.a. ~ 483 a.a) partial recombinant protein with GST tag. MW of the GST tag alone is 26 kDa.

##### **Dilution**

WB ~ 1:500 ~ 1000

##### **Format**

Clear, colorless solution in phosphate buffered saline, pH 7.2 .

##### **Storage**

Store at -20°C or lower. Aliquot to avoid repeated freezing and thawing.

##### **Precautions**

SMARCD3 Antibody (monoclonal) (M01) is for research use only and not for use in diagnostic or therapeutic procedures.

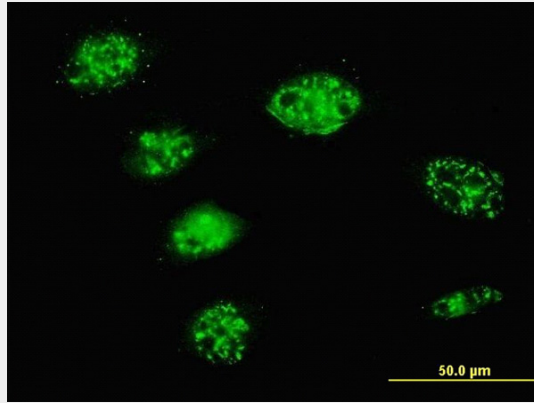
#### **SMARCD3 Antibody (monoclonal) (M01) - Protocols**

Provided below are standard protocols that you may find useful for product applications.

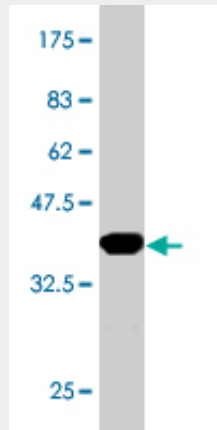
- [Western Blot](#)
- [Blocking Peptides](#)

- [Dot Blot](#)
- [Immunohistochemistry](#)
- [Immunofluorescence](#)
- [Immunoprecipitation](#)
- [Flow Cytometry](#)
- [Cell Culture](#)

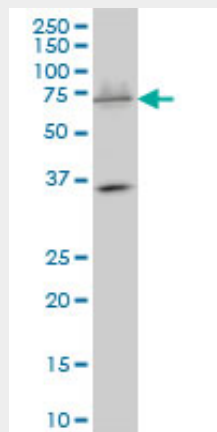
### SMARCD3 Antibody (monoclonal) (M01) - Images



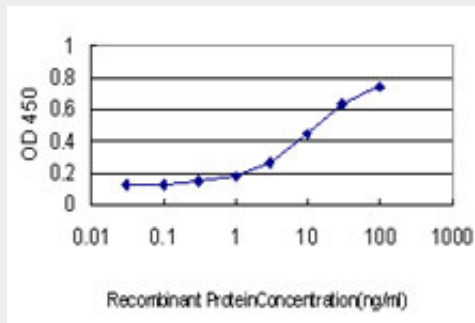
Immunofluorescence of monoclonal antibody to SMARCD3 on HeLa cell. [antibody concentration 10 ug/ml]



Antibody Reactive Against Recombinant Protein. Western Blot detection against Immunogen (36.63 KDa) .



SMARCD3 monoclonal antibody (M01), clone 1G6 Western Blot analysis of SMARCD3 expression in K-562 ( (Cat # AT3954a )



Detection limit for recombinant GST tagged SMARCD3 is approximately 0.3ng/ml as a capture antibody.

### **SMARCD3 Antibody (monoclonal) (M01) - Background**

The protein encoded by this gene is a member of the SWI/SNF family of proteins, whose members display helicase and ATPase activities and which are thought to regulate transcription of certain genes by altering the chromatin structure around those genes. The encoded protein is part of the large ATP-dependent chromatin remodeling complex SNF/SWI and has sequence similarity to the yeast Swp73 protein. Multiple alternatively spliced transcript variants have been found for this gene, but the biological validity of some variants has not been determined.

### **SMARCD3 Antibody (monoclonal) (M01) - References**

1. Directing cardiomyogenic differentiation of human pluripotent stem cells by plasmid-based transient overexpression of cardiac transcription factors. Hartung S, Schwanke K, Haase A, David R, Franz WM, Martin U, Zweigerdt R. *Stem Cells Dev.* 2013 Apr 1;22(7):1112-25. doi: 10.1089/scd.2012.0351. Epub 2013 Jan 18.

2. Massively parallel sequencing identifies the gene *Megf8* with ENU-induced mutation causing heterotaxy. Zhang Z, Alpert D, Francis R, Chatterjee B, Yu Q, Tansey T, Sabol SL, Cui C, Bai Y, Koriabine M, Yoshinaga Y, Cheng JF, Chen F, Martin J, Schackwitz W, Gunn TM, Kramer KL, De Jong PJ, Pennacchio LA, Lo CW. *Proc Natl Acad Sci U S A.* 2009 Mar 3;106(9):3219-24. Epub 2009 Feb 13.

3. The core component of the mammalian SWI/SNF complex SMARCD3/BAF60c is a coactivator for the nuclear retinoic acid receptor. Flajollet S, Lefebvre B, Cudejko C, Staels B, Lefebvre P. *Mol Cell Endocrinol.* 2007 May 30;270(1-2):23-32. Epub 2007 Feb 15.