

SMAD6 Antibody (monoclonal) (M08)

Mouse monoclonal antibody raised against a partial recombinant SMAD6.

Catalog # AT3947a

Specification

SMAD6 Antibody (monoclonal) (M08) - Product Information

Application	WB, E
Primary Accession	O43541
Other Accession	NM_005585
Reactivity	Human
Host	mouse
Clonality	Monoclonal
Isotype	IgG2a Kappa
Calculated MW	53497

SMAD6 Antibody (monoclonal) (M08) - Additional Information

Gene ID 4091

Other Names

Mothers against decapentaplegic homolog 6, MAD homolog 6, Mothers against DPP homolog 6, SMAD family member 6, SMAD 6, Smad6, hSMAD6, SMAD6, MADH6

Target/Specificity

SMAD6 (NP_005576, 285 a.a. ~ 384 a.a) partial recombinant protein with GST tag. MW of the GST tag alone is 26 KDa.

Dilution

WB~~1:500~1000

Format

Clear, colorless solution in phosphate buffered saline, pH 7.2 .

Storage

Store at -20°C or lower. Aliquot to avoid repeated freezing and thawing.

Precautions

SMAD6 Antibody (monoclonal) (M08) is for research use only and not for use in diagnostic or therapeutic procedures.

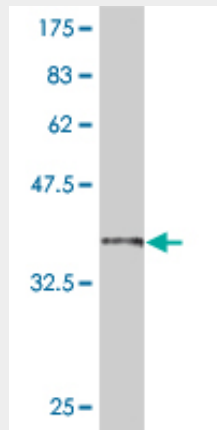
SMAD6 Antibody (monoclonal) (M08) - Protocols

Provided below are standard protocols that you may find useful for product applications.

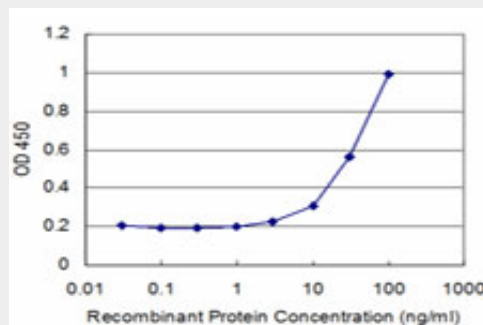
- [Western Blot](#)
- [Blocking Peptides](#)
- [Dot Blot](#)

- [Immunohistochemistry](#)
- [Immunofluorescence](#)
- [Immunoprecipitation](#)
- [Flow Cytometry](#)
- [Cell Culture](#)

SMAD6 Antibody (monoclonal) (M08) - Images



Antibody Reactive Against Recombinant Protein. Western Blot detection against Immunogen (36.74 kDa).



Detection limit for recombinant GST tagged SMAD6 is approximately 3ng/ml as a capture antibody.

SMAD6 Antibody (monoclonal) (M08) - Background

The protein encoded by this gene belongs to the SMAD family of proteins, which are related to *Drosophila* 'mothers against decapentaplegic' (Mad) and *C. elegans* Sma. SMAD proteins are signal transducers and transcriptional modulators that mediate multiple signaling pathways. This protein functions in the negative regulation of BMP and TGF-beta/activin-signalling. Multiple transcript variants encoding different isoforms have been found for this gene.

SMAD6 Antibody (monoclonal) (M08) - References

Smad2 and Smad6 as predictors of overall survival in oral squamous cell carcinoma patients. Mangone FR, et al. *Mol Cancer*, 2010 May 12. PMID 20462450. Association of TGFBR2 polymorphism with risk of sudden cardiac arrest in patients with coronary artery disease. Tseng ZH, et al. *Heart Rhythm*, 2009 Dec. PMID 19959123. Downregulation of SMAD2, 4 and 6 mRNA and TGFbeta receptor I mRNA in lesional and non-lesional psoriatic skin. Yu H, et al. *Acta Derm Venereol*, 2009. PMID 19688145. Bone mass effects of a Smad6 gene polymorphism in Japanese postmenopausal women. Urano T, et al. *J Bone Miner Metab*, 2009. PMID 19277452. A new nonsense mutation of SMAD8 associated with pulmonary arterial hypertension. Shintani M, et al. *J Med Genet*, 2009 May.

PMID 19211612.