

## **SMAD6 Antibody (monoclonal) (M07)**

Mouse monoclonal antibody raised against a partial recombinant SMAD6.

Catalog # AT3946a

### **Specification**

---

#### **SMAD6 Antibody (monoclonal) (M07) - Product Information**

|                   |                           |
|-------------------|---------------------------|
| Application       | WB, E                     |
| Primary Accession | <a href="#">O43541</a>    |
| Other Accession   | <a href="#">NM_005585</a> |
| Reactivity        | Human                     |
| Host              | Mouse                     |
| Clonality         | Monoclonal                |
| Isotype           | IgG2b Kappa               |
| Calculated MW     | 53497                     |

#### **SMAD6 Antibody (monoclonal) (M07) - Additional Information**

**Gene ID** 4091

##### **Other Names**

Mothers against decapentaplegic homolog 6, MAD homolog 6, Mothers against DPP homolog 6, SMAD family member 6, SMAD 6, Smad6, hSMAD6, SMAD6, MADH6

##### **Target/Specificity**

SMAD6 (NP\_005576, 285 a.a. ~ 384 a.a) partial recombinant protein with GST tag. MW of the GST tag alone is 26 KDa.

##### **Dilution**

WB~~1:500~1000

##### **Format**

Clear, colorless solution in phosphate buffered saline, pH 7.2 .

##### **Storage**

Store at -20°C or lower. Aliquot to avoid repeated freezing and thawing.

##### **Precautions**

SMAD6 Antibody (monoclonal) (M07) is for research use only and not for use in diagnostic or therapeutic procedures.

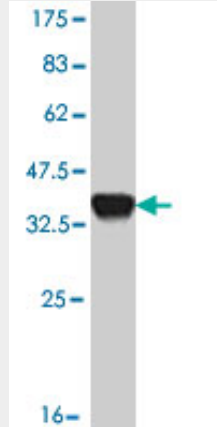
#### **SMAD6 Antibody (monoclonal) (M07) - Protocols**

Provided below are standard protocols that you may find useful for product applications.

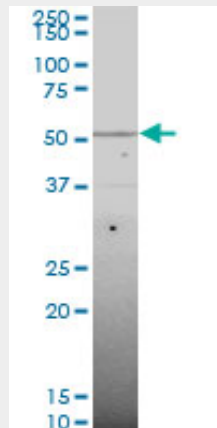
- [Western Blot](#)
- [Blocking Peptides](#)
- [Dot Blot](#)

- [Immunohistochemistry](#)
- [Immunofluorescence](#)
- [Immunoprecipitation](#)
- [Flow Cytometry](#)
- [Cell Culture](#)

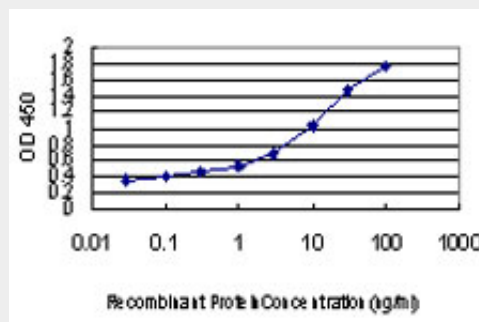
**SMAD6 Antibody (monoclonal) (M07) - Images**



Antibody Reactive Against Recombinant Protein. Western Blot detection against Immunogen (36.74 KDa) .



SMAD6 monoclonal antibody (M07), clone 4F4. Western Blot analysis of SMAD6 expression in MCF-7 ( (Cat # AT3946a )



Detection limit for recombinant GST tagged SMAD6 is approximately 0.03ng/ml as a capture antibody.

**SMAD6 Antibody (monoclonal) (M07) - Background**

The protein encoded by this gene belongs to the SMAD family of proteins, which are related to *Drosophila* 'mothers against decapentaplegic' (Mad) and *C. elegans* Sma. SMAD proteins are signal transducers and transcriptional modulators that mediate multiple signaling pathways. This protein functions in the negative regulation of BMP and TGF-beta/activin-signalling. Multiple transcript variants encoding different isoforms have been found for this gene.

### **SMAD6 Antibody (monoclonal) (M07) - References**

Smad2 and Smad6 as predictors of overall survival in oral squamous cell carcinoma patients. Mangone FR, et al. *Mol Cancer*, 2010 May 12. PMID 20462450. Association of TGFBR2 polymorphism with risk of sudden cardiac arrest in patients with coronary artery disease. Tseng ZH, et al. *Heart Rhythm*, 2009 Dec. PMID 19959123. Downregulation of SMAD2, 4 and 6 mRNA and TGFbeta receptor I mRNA in lesional and non-lesional psoriatic skin. Yu H, et al. *Acta Derm Venereol*, 2009. PMID 19688145. Bone mass effects of a Smad6 gene polymorphism in Japanese postmenopausal women. Urano T, et al. *J Bone Miner Metab*, 2009. PMID 19277452. A new nonsense mutation of SMAD8 associated with pulmonary arterial hypertension. Shintani M, et al. *J Med Genet*, 2009 May. PMID 19211612.