

SMAD3 Antibody (monoclonal) (M09)

Mouse monoclonal antibody raised against a partial recombinant SMAD3.

Catalog # AT3941a

Specification

SMAD3 Antibody (monoclonal) (M09) - Product Information

Application	IF, WB, E
Primary Accession	P84022
Other Accession	NM_005902
Reactivity	Human
Host	mouse
Clonality	Monoclonal
Isotype	IgG2a Kappa
Calculated MW	48081

SMAD3 Antibody (monoclonal) (M09) - Additional Information

Gene ID 4088

Other Names

Mothers against decapentaplegic homolog 3, MAD homolog 3, Mad3, Mothers against DPP homolog 3, hMAD-3, JV15-2, SMAD family member 3, SMAD 3, Smad3, hSMAD3, SMAD3, MADH3

Target/Specificity

SMAD3 (NP_005893, 1 a.a. ~ 110 a.a) partial recombinant protein with GST tag. MW of the GST tag alone is 26 KDa.

Dilution

WB~~1:500~1000

Format

Clear, colorless solution in phosphate buffered saline, pH 7.2 .

Storage

Store at -20°C or lower. Aliquot to avoid repeated freezing and thawing.

Precautions

SMAD3 Antibody (monoclonal) (M09) is for research use only and not for use in diagnostic or therapeutic procedures.

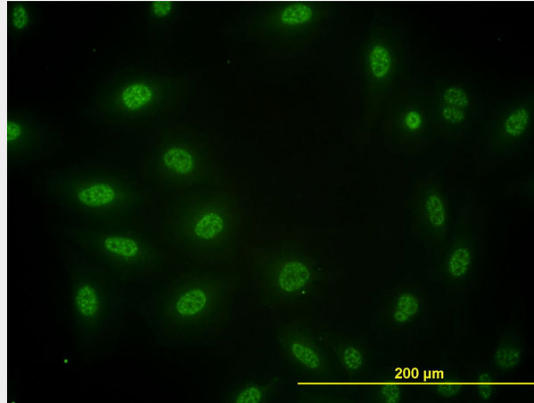
SMAD3 Antibody (monoclonal) (M09) - Protocols

Provided below are standard protocols that you may find useful for product applications.

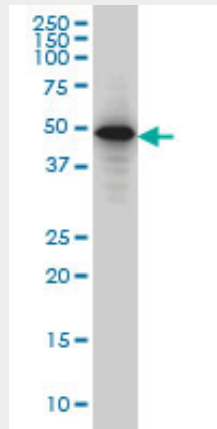
- [Western Blot](#)
- [Blocking Peptides](#)
- [Dot Blot](#)

- [Immunohistochemistry](#)
- [Immunofluorescence](#)
- [Immunoprecipitation](#)
- [Flow Cytometry](#)
- [Cell Culture](#)

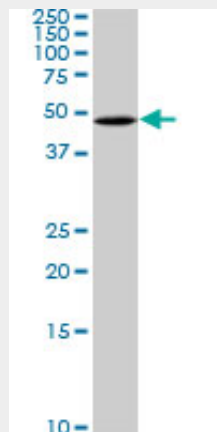
SMAD3 Antibody (monoclonal) (M09) - Images



Immunofluorescence of monoclonal antibody to SMAD3 on HeLa cell. [antibody concentration 10 ug/ml]

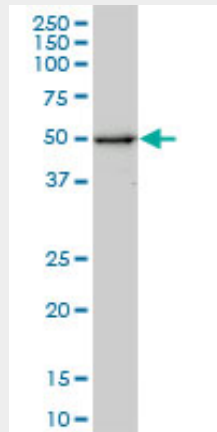


SMAD3 monoclonal antibody (M09), clone 1C11 Western Blot analysis of SMAD3 expression in HeLa S3 NE (Cat # L013V3).

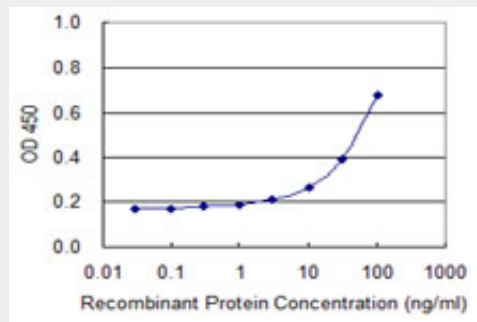


SMAD3 monoclonal antibody (M09), clone 1C11. Western Blot analysis of SMAD3 expression in

SJCRH30 ((Cat # AT3941a)



SMAD3 monoclonal antibody (M09), clone 1C11. Western Blot analysis of SMAD3 expression in Jurkat ((Cat # AT3941a)



Detection limit for recombinant GST tagged SMAD3 is approximately 3ng/ml as a capture antibody.

SMAD3 Antibody (monoclonal) (M09) - Background

The protein encoded by this gene belongs to the SMAD, a family of proteins similar to the gene products of the *Drosophila* gene 'mothers against decapentaplegic' (Mad) and the *C. elegans* gene Sma. SMAD proteins are signal transducers and transcriptional modulators that mediate multiple signaling pathways. This protein functions as a transcriptional modulator activated by transforming growth factor-beta and is thought to play a role in the regulation of carcinogenesis.

SMAD3 Antibody (monoclonal) (M09) - References

Common genetic polymorphisms in Moyamoya and atherosclerotic disease in Europeans. Roder C, et al. *Childs Nerv Syst*, 2010 Aug 6. PMID 20694560. Maternal genes and facial clefts in offspring: a comprehensive search for genetic associations in two population-based cleft studies from Scandinavia. Jugessur A, et al. *PLoS One*, 2010 Jul 9. PMID 20634891. Genetic variation in the SMAD3 gene is associated with hip and knee osteoarthritis. Valdes AM, et al. *Arthritis Rheum*, 2010 Aug. PMID 20506137. Single-nucleotide polymorphisms in SMAD3 are associated with chronic obstructive pulmonary disease. Yang T, et al. *Exp Biol Med (Maywood)*, 2010 May. PMID 20463300. Personalized smoking cessation: interactions between nicotine dose, dependence and quit-success genotype score. Rose JE, et al. *Mol Med*, 2010 Jul-Aug. PMID 20379614.