

## SLC9A1 Antibody (monoclonal) (M01)

Mouse monoclonal antibody raised against a partial recombinant SLC9A1.

Catalog # AT3932a

### Specification

---

#### SLC9A1 Antibody (monoclonal) (M01) - Product Information

Application	WB, IHC, E
Primary Accession	<a href="#">P19634</a>
Other Accession	<a href="#">BC012121</a>
Reactivity	Human
Host	mouse
Clonality	Monoclonal
Isotype	IgG1 Kappa
Calculated MW	90763

#### SLC9A1 Antibody (monoclonal) (M01) - Additional Information

Gene ID 6548

#### Other Names

Sodium/hydrogen exchanger 1, APNH, Na(+)/H(+) antiporter, amiloride-sensitive, Na(+)/H(+) exchanger 1, NHE-1, Solute carrier family 9 member 1, SLC9A1, APNH1, NHE1

#### Target/Specificity

SLC9A1 (AAH12121, 31 a.a. ~ 130 a.a) partial recombinant protein with GST tag. MW of the GST tag alone is 26 KDa.

#### Dilution

WB~~1:500~1000

#### Format

Clear, colorless solution in phosphate buffered saline, pH 7.2 .

#### Storage

Store at -20°C or lower. Aliquot to avoid repeated freezing and thawing.

#### Precautions

SLC9A1 Antibody (monoclonal) (M01) is for research use only and not for use in diagnostic or therapeutic procedures.

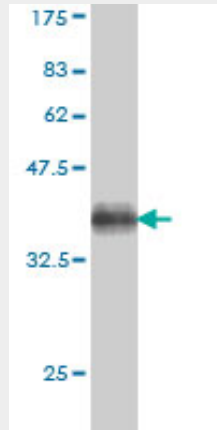
#### SLC9A1 Antibody (monoclonal) (M01) - Protocols

Provided below are standard protocols that you may find useful for product applications.

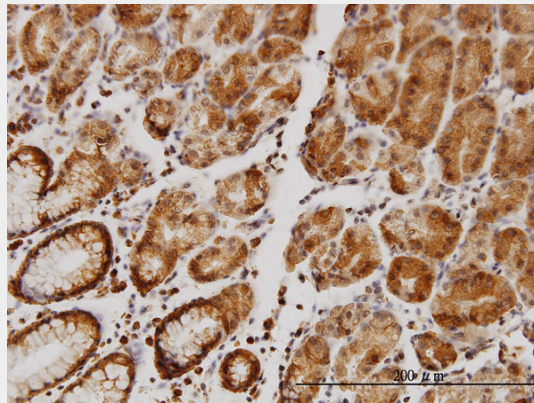
- [Western Blot](#)
- [Blocking Peptides](#)
- [Dot Blot](#)

- [Immunohistochemistry](#)
- [Immunofluorescence](#)
- [Immunoprecipitation](#)
- [Flow Cytometry](#)
- [Cell Culture](#)

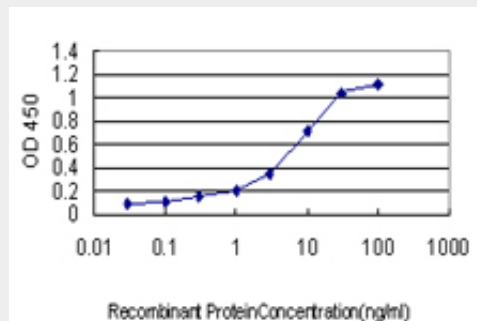
### SLC9A1 Antibody (monoclonal) (M01) - Images



Antibody Reactive Against Recombinant Protein. Western Blot detection against Immunogen (36.41 kDa) .



Immunoperoxidase of monoclonal antibody to SLC9A1 on formalin-fixed paraffin-embedded human stomach. [antibody concentration 3 ug/ml]



Detection limit for recombinant GST tagged SLC9A1 is approximately 0.3ng/ml as a capture antibody.

### SLC9A1 Antibody (monoclonal) (M01) - Background

The Na<sup>+</sup>/H<sup>+</sup> antiporter (SLC9A1) is a ubiquitous membrane-bound enzyme involved in pH regulation of vertebrate cells. It is specifically inhibited by the diuretic drug amiloride and activated by a variety of signals including growth factors, mitogens, neurotransmitters, tumor promoters, and others (Mattei et al., 1988 [PubMed 2846238]).

### **SLC9A1 Antibody (monoclonal) (M01) - References**

Upregulation of Na<sup>+</sup>/H<sup>+</sup> exchanger by the AMP-activated protein kinase. Rotte A, et al. *Biochem Biophys Res Commun*, 2010 Aug 6. PMID 20609358. NBCn1 and NHE1 expression and activity in DeltaNErbB2 receptor-expressing MCF-7 breast cancer cells: contributions to pHi regulation and chemotherapy resistance. Lauritzen G, et al. *Exp Cell Res*, 2010 Sep 10. PMID 20542029. Ouabain stimulates Na-K-ATPase through a sodium/hydrogen exchanger-1 (NHE-1)-dependent mechanism in human kidney proximal tubule cells. Holthouser KA, et al. *Am J Physiol Renal Physiol*, 2010 Jul. PMID 20427472. Inhibition of Na(+)/H(+) exchanger 1 by 5-(N-ethyl-N-isopropyl) amiloride reduces hypoxia-induced hepatocellular carcinoma invasion and motility. Yang X, et al. *Cancer Lett*, 2010 Sep 28. PMID 20338684. Activation of Na<sup>+</sup>/H<sup>+</sup> exchanger 1 by neurotensin signaling in pancreatic cancer cell lines. Olszewski U, et al. *Biochem Biophys Res Commun*, 2010 Mar 12. PMID 20138826.