

SLC44A1 Antibody (monoclonal) (M02)

Mouse monoclonal antibody raised against a partial recombinant SLC44A1.

Catalog # AT3924a

Specification

SLC44A1 Antibody (monoclonal) (M02) - Product Information

Application	WB, E
Primary Accession	O8WWI5
Other Accession	NM_080546
Reactivity	Human
Host	mouse
Clonality	Monoclonal
Isotype	IgG2a Kappa
Calculated MW	73302

SLC44A1 Antibody (monoclonal) (M02) - Additional Information

Gene ID 23446

Other Names

Choline transporter-like protein 1, CDw92, Solute carrier family 44 member 1, CD92, SLC44A1, CD92, CDW92, CTL1

Target/Specificity

SLC44A1 (NP_536856, 74 a.a. ~ 183 a.a) partial recombinant protein with GST tag. MW of the GST tag alone is 26 KDa.

Dilution

WB~~1:500~1000

Format

Clear, colorless solution in phosphate buffered saline, pH 7.2 .

Storage

Store at -20°C or lower. Aliquot to avoid repeated freezing and thawing.

Precautions

SLC44A1 Antibody (monoclonal) (M02) is for research use only and not for use in diagnostic or therapeutic procedures.

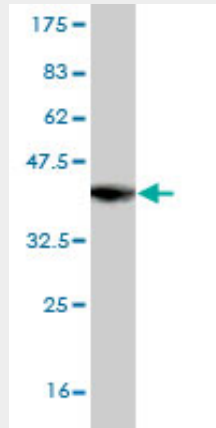
SLC44A1 Antibody (monoclonal) (M02) - Protocols

Provided below are standard protocols that you may find useful for product applications.

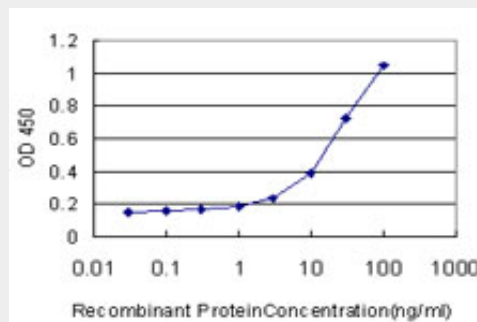
- [Western Blot](#)
- [Blocking Peptides](#)
- [Dot Blot](#)

- [Immunohistochemistry](#)
- [Immunofluorescence](#)
- [Immunoprecipitation](#)
- [Flow Cytometry](#)
- [Cell Culture](#)

SLC44A1 Antibody (monoclonal) (M02) - Images



Antibody Reactive Against Recombinant Protein. Western Blot detection against Immunogen (37.84 KDa) .



Detection limit for recombinant GST tagged SLC44A1 is approximately 3ng/ml as a capture antibody.

SLC44A1 Antibody (monoclonal) (M02) - References

Detection of choline transporter-like 1 protein CTL1 in neuroblastoma x glioma cells and in the CNS, and its role in choline uptake. Machov? E, et al. J Neurochem, 2009 Aug. PMID 19519661. Meta-analysis of genome-wide association data identifies two loci influencing age at menarche. Perry JR, et al. Nat Genet, 2009 Jun. PMID 19448620. The solute carrier 44A1 is a mitochondrial protein and mediates choline transport. Michel V, et al. FASEB J, 2009 Aug. PMID 19357133. Genomic organization, promoter activity, and expression of the human choline transporter-like protein 1. Yuan Z, et al. Physiol Genomics, 2006 Jun 16. PMID 16609143. Impaired trafficking of choline transporter-like protein-1 at plasma membrane and inhibition of choline transport in THP-1 monocyte-derived macrophages. Fullerton MD, et al. Am J Physiol Cell Physiol, 2006 Apr. PMID 16319125.

SLC44A1 Antibody (monoclonal) (M02) - Citations

- [Expression of choline and acetylcholine transporters in synovial tissue and cartilage of patients with rheumatoid arthritis and osteoarthritis.](#)