

## SLC25A11 Antibody (monoclonal) (M01)

Mouse monoclonal antibody raised against a full length recombinant SLC25A11.

Catalog # AT3910a

### Specification

---

#### SLC25A11 Antibody (monoclonal) (M01) - Product Information

Application	WB, IHC, E
Primary Accession	<a href="#">Q02978</a>
Other Accession	<a href="#">BC006508</a>
Reactivity	Human
Host	mouse
Clonality	Monoclonal
Isotype	IgG1 Kappa
Calculated MW	34062

#### SLC25A11 Antibody (monoclonal) (M01) - Additional Information

Gene ID 8402

##### Other Names

Mitochondrial 2-oxoglutarate/malate carrier protein, OGCP, Solute carrier family 25 member 11, SLC25A11, SLC20A4

##### Target/Specificity

SLC25A11 (AAH06508, 1 a.a. ~ 314 a.a) full-length recombinant protein with GST tag. MW of the GST tag alone is 26 KDa.

##### Dilution

WB~~1:500~1000

##### Format

Clear, colorless solution in phosphate buffered saline, pH 7.2 .

##### Storage

Store at -20°C or lower. Aliquot to avoid repeated freezing and thawing.

##### Precautions

SLC25A11 Antibody (monoclonal) (M01) is for research use only and not for use in diagnostic or therapeutic procedures.

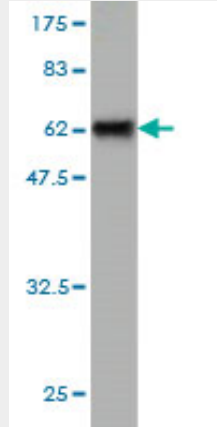
#### SLC25A11 Antibody (monoclonal) (M01) - Protocols

Provided below are standard protocols that you may find useful for product applications.

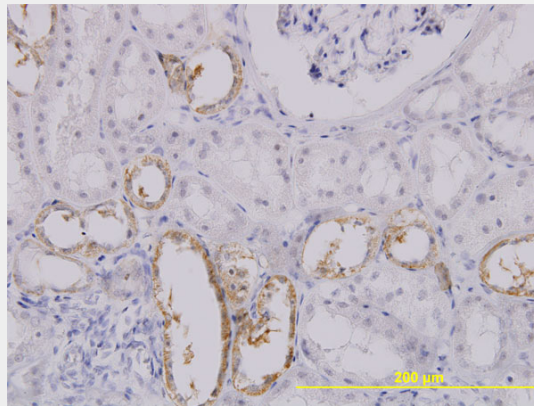
- [Western Blot](#)
- [Blocking Peptides](#)
- [Dot Blot](#)

- [Immunohistochemistry](#)
- [Immunofluorescence](#)
- [Immunoprecipitation](#)
- [Flow Cytometry](#)
- [Cell Culture](#)

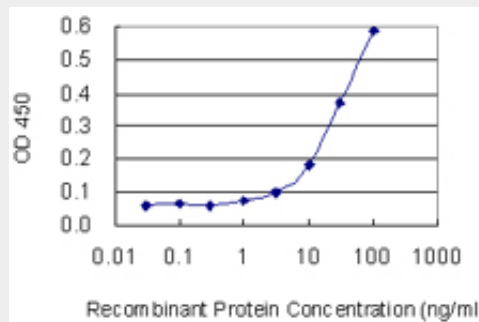
**SLC25A11 Antibody (monoclonal) (M01) - Images**



Antibody Reactive Against Recombinant Protein. Western Blot detection against Immunogen (60.28 KDa) .



Immunoperoxidase of monoclonal antibody to SLC25A11 on formalin-fixed paraffin-embedded human kidney. [antibody concentration 3 ug/ml]



Detection limit for recombinant GST tagged SLC25A11 is 1 ng/ml as a capture antibody.

**SLC25A11 Antibody (monoclonal) (M01) - Background**

The oxoglutarate/malate carrier transports 2-oxoglutarate across the inner membranes of

mitochondria in an electroneutral exchange for malate or other dicarboxylic acids (summarized by Iacobazzi et al., 1992 [PubMed 1457818]).

### **SLC25A11 Antibody (monoclonal) (M01) - References**

Variation at the NFATC2 Locus Increases the Risk of Thiazolidinedione-Induced Edema in the Diabetes REduction Assessment with ramipril and rosiglitazone Medication (DREAM) Study. Bailey SD, et al. Diabetes Care, 2010 Jul 13. PMID 20628086. Gene-centric association signals for lipids and apolipoproteins identified via the HumanCVD BeadChip. Talmud PJ, et al. Am J Hum Genet, 2009 Nov. PMID 19913121. Defining the human deubiquitinating enzyme interaction landscape. Sowa ME, et al. Cell, 2009 Jul 23. PMID 19615732. Porphyrin accumulation in mitochondria is mediated by 2-oxoglutarate carrier. Kabe Y, et al. J Biol Chem, 2006 Oct 20. PMID 16920706. Identification of intrahepatic cholangiocarcinoma related genes by comparison with normal liver tissues using expressed sequence tags. Wang AG, et al. Biochem Biophys Res Commun, 2006 Jul 7. PMID 16712791.