

SLC11A2 Antibody (monoclonal) (M01)

Mouse monoclonal antibody raised against a partial recombinant SLC11A2.

Catalog # AT3900a

Specification

SLC11A2 Antibody (monoclonal) (M01) - Product Information

Application	WB, IHC, E
Primary Accession	P49281
Other Accession	NM_000617
Reactivity	Human
Host	mouse
Clonality	Monoclonal
Isotype	IgG2a Kappa
Calculated MW	62266

SLC11A2 Antibody (monoclonal) (M01) - Additional Information

Gene ID 4891

Other Names

Natural resistance-associated macrophage protein 2, NRAMP 2, Divalent cation transporter 1, Divalent metal transporter 1, DMT-1, Solute carrier family 11 member 2, SLC11A2, DCT1, DMT1, NRAMP2

Target/Specificity

SLC11A2 (NP_000608, 1 a.a. ~ 65 a.a) partial recombinant protein with GST tag. MW of the GST tag alone is 26 KDa.

Dilution

WB~~1:500~1000

Format

Clear, colorless solution in phosphate buffered saline, pH 7.2 .

Storage

Store at -20°C or lower. Aliquot to avoid repeated freezing and thawing.

Precautions

SLC11A2 Antibody (monoclonal) (M01) is for research use only and not for use in diagnostic or therapeutic procedures.

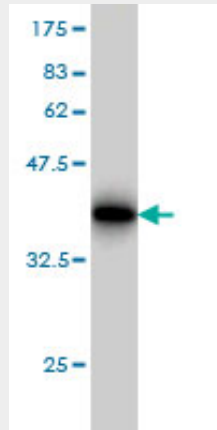
SLC11A2 Antibody (monoclonal) (M01) - Protocols

Provided below are standard protocols that you may find useful for product applications.

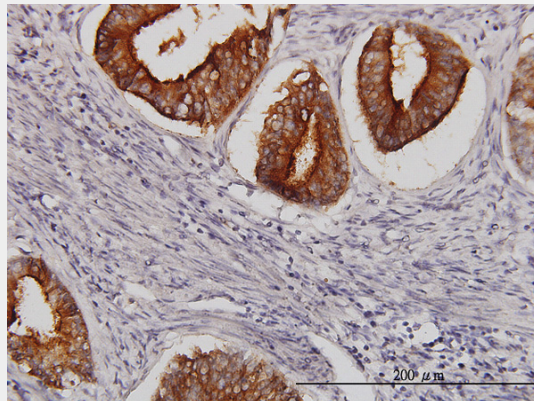
- [Western Blot](#)
- [Blocking Peptides](#)

- [Dot Blot](#)
- [Immunohistochemistry](#)
- [Immunofluorescence](#)
- [Immunoprecipitation](#)
- [Flow Cytometry](#)
- [Cell Culture](#)

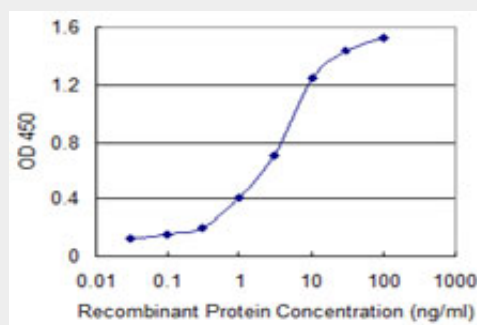
SLC11A2 Antibody (monoclonal) (M01) - Images



Antibody Reactive Against Recombinant Protein. Western Blot detection against Immunogen (32.89 KDa) .



Immunoperoxidase of monoclonal antibody to SLC11A2 on formalin-fixed paraffin-embedded human endometrium cancer. [antibody concentration 3 ug/ml]



Detection limit for recombinant GST tagged SLC11A2 is 0.03 ng/ml as a capture antibody.

SLC11A2 Antibody (monoclonal) (M01) - Background

This gene encodes a member of the solute carrier family 11 protein family. The product of this gene transports divalent metals and is involved in iron absorption. Mutations in this gene are associated with hypochromic microcytic anemia with iron overload. A related solute carrier family 11 protein gene is located on chromosome 2. Multiple transcript variants encoding different isoforms have been found for this gene.

SLC11A2 Antibody (monoclonal) (M01) - References

1. Development and Validation of a Fast and Homogeneous Cell-Based Fluorescence Screening Assay for Divalent Metal Transporter 1 (DMT1/SLC11A2) Using the FLIPR Tetra. Montalbetti N, Simonin A, Dalghi MG, Kovacs G, Hediger MAJ Biomol Screen. 2014 Feb 6. 2. Divalent metal transporter 1 (DMT1) regulation by Ndfip1 prevents metal toxicity in human neurons. Howitt J, Putz U, Lackovic J, Doan A, Dorstyn L, Cheng H, Yang B, Chan-Ling T, Silke J, Kumar S, Tan SS. Proc Natl Acad Sci U S A. 2009 Sep 8;106(36):15489-94. Epub 2009 Aug 25. 3. Regulation of the divalent metal ion transporter DMT1 and iron homeostasis by a ubiquitin-dependent mechanism involving Ndfips and WWP2. Foot NJ, Dalton HE, Shearwin-Whyatt LM, Dorstyn L, Tan SS, Yang B, Kumar S. Blood. 2008 Nov 15;112(10):4268-75. Epub 2008 Sep 5.