

SLA2 Antibody (monoclonal) (M01)

Mouse monoclonal antibody raised against a full length recombinant SLA2.

Catalog # AT3898a

Specification

SLA2 Antibody (monoclonal) (M01) - Product Information

Application	WB, E
Primary Accession	O9H6Q3
Other Accession	BC042041
Reactivity	Human
Host	mouse
Clonality	Monoclonal
Isotype	IgG1 kappa
Calculated MW	28585

SLA2 Antibody (monoclonal) (M01) - Additional Information

Gene ID 84174

Other Names

Src-like-adaptor 2, Modulator of antigen receptor signaling, MARS, Src-like adapter protein 2, SLAP-2, SLA2, C20orf156, SLAP2

Target/Specificity

SLA2 (AAH42041, 1 a.a. ~ 261 a.a) full-length recombinant protein with GST tag. MW of the GST tag alone is 26 KDa.

Dilution

WB~~1:500~1000

Format

Clear, colorless solution in phosphate buffered saline, pH 7.2 .

Storage

Store at -20°C or lower. Aliquot to avoid repeated freezing and thawing.

Precautions

SLA2 Antibody (monoclonal) (M01) is for research use only and not for use in diagnostic or therapeutic procedures.

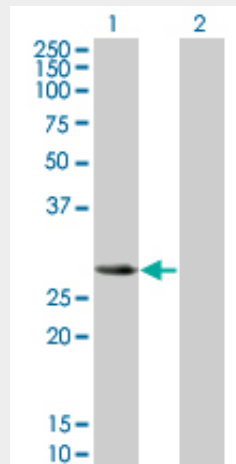
SLA2 Antibody (monoclonal) (M01) - Protocols

Provided below are standard protocols that you may find useful for product applications.

- [Western Blot](#)
- [Blocking Peptides](#)
- [Dot Blot](#)

- [Immunohistochemistry](#)
- [Immunofluorescence](#)
- [Immunoprecipitation](#)
- [Flow Cytometry](#)
- [Cell Culture](#)

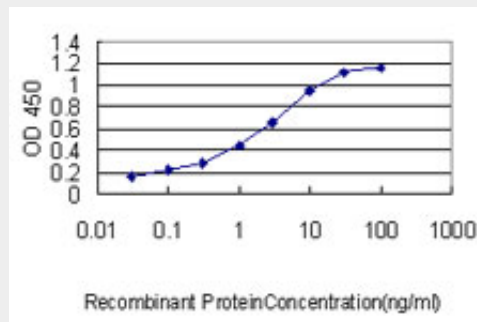
SLA2 Antibody (monoclonal) (M01) - Images



Western Blot analysis of SLA2 expression in transfected 293T cell line by SLA2 monoclonal antibody (M01), clone 3G5.

Lane 1: SLA2 transfected lysate(28.454 kDa).

Lane 2: Non-transfected lysate.



Detection limit for recombinant GST tagged SLA2 is approximately 0.03ng/ml as a capture antibody.

SLA2 Antibody (monoclonal) (M01) - Background

This gene encodes a member of the SLAP family of adapter proteins. The encoded protein may play an important receptor-proximal role in downregulating T and B cell-mediated responses and inhibits antigen receptor-induced calcium mobilization. This protein interacts with Cas-Br-M (murine) ecotropic retroviral transforming sequence c. Two transcript variants encoding distinct isoforms have been identified for this gene.

SLA2 Antibody (monoclonal) (M01) - References

The Src-like adaptor protein 2 regulates colony-stimulating factor-1 receptor signaling and down-regulation. Pakuts B, et al. J Biol Chem, 2007 Jun 22. PMID 17353186. The status, quality, and expansion of the NIH full-length cDNA project: the Mammalian Gene Collection (MGC). Gerhard DS,

et al. Genome Res, 2004 Oct. PMID 15489334. Complete sequencing and characterization of 21,243 full-length human cDNAs. Ota T, et al. Nat Genet, 2004 Jan. PMID 14702039. Cloning and characterization of human Src-like adaptor protein 2 and a novel splice isoform, SLAP-2-v. Loreto MP, et al. Oncogene, 2003 Jan 16. PMID 12527895. Generation and initial analysis of more than 15,000 full-length human and mouse cDNA sequences. Strausberg RL, et al. Proc Natl Acad Sci U S A, 2002 Dec 24. PMID 12477932.