

## **SKP1A Antibody (monoclonal) (M01)**

Mouse monoclonal antibody raised against a partial recombinant SKP1A.

Catalog # AT3897a

### **Specification**

---

#### **SKP1A Antibody (monoclonal) (M01) - Product Information**

Application	IF, WB
Primary Accession	<a href="#">P63208</a>
Other Accession	<a href="#">NM_006930</a>
Reactivity	Human
Host	mouse
Clonality	Monoclonal
Isotype	IgG2a Kappa
Calculated MW	18658

#### **SKP1A Antibody (monoclonal) (M01) - Additional Information**

**Gene ID** 6500

##### **Other Names**

S-phase kinase-associated protein 1, Cyclin-A/CDK2-associated protein p19, p19A, Organ of Corti protein 2, OCP-2, Organ of Corti protein II, OCP-II, RNA polymerase II elongation factor-like protein, SIII, Transcription elongation factor B polypeptide 1-like, p19skp1, SKP1, EMC19, OCP2, SKP1A, TCEB1L

##### **Target/Specificity**

SKP1A (NP\_008861, 53 a.a. ~ 160 a.a) partial recombinant protein with GST tag. MW of the GST tag alone is 26 KDa.

##### **Dilution**

WB~~1:500~1000

##### **Format**

Clear, colorless solution in phosphate buffered saline, pH 7.2 .

##### **Storage**

Store at -20°C or lower. Aliquot to avoid repeated freezing and thawing.

##### **Precautions**

SKP1A Antibody (monoclonal) (M01) is for research use only and not for use in diagnostic or therapeutic procedures.

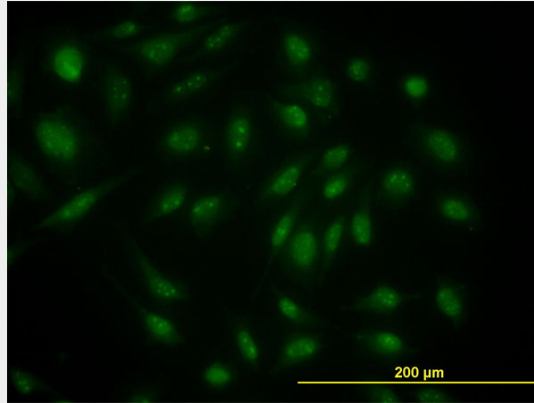
#### **SKP1A Antibody (monoclonal) (M01) - Protocols**

Provided below are standard protocols that you may find useful for product applications.

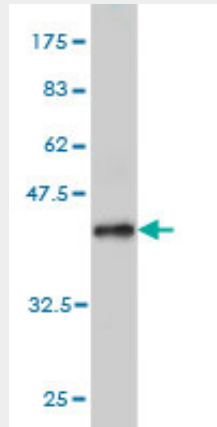
- [Western Blot](#)

- [Blocking Peptides](#)
- [Dot Blot](#)
- [Immunohistochemistry](#)
- [Immunofluorescence](#)
- [Immunoprecipitation](#)
- [Flow Cytometry](#)
- [Cell Culture](#)

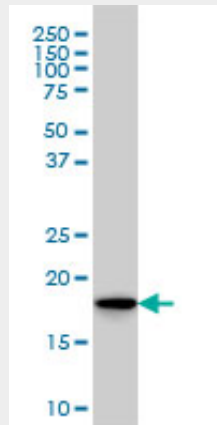
### SKP1A Antibody (monoclonal) (M01) - Images



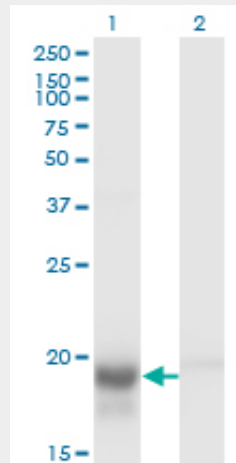
Immunofluorescence of monoclonal antibody to SKP1A on HeLa cell. [antibody concentration 10 ug/ml]



Antibody Reactive Against Recombinant Protein. Western Blot detection against Immunogen (37.62 KDa) .



SKP1A monoclonal antibody (M01), clone 1H8 Western Blot analysis of SKP1A expression in HeLa ( (Cat # AT3897a )



Western Blot analysis of SKP1 expression in transfected 293T cell line by SKP1A monoclonal antibody (M01), clone 1H8.

Lane 1: SKP1 transfected lysate(18.1 KDa).

Lane 2: Non-transfected lysate.

### SKP1A Antibody (monoclonal) (M01) - Background

This gene encodes a component of SCF complexes, which are composed of this protein, cullin 1, a ring-box protein, and one member of the F-box family of proteins. This protein binds directly to the F-box motif found in F-box proteins. SCF complexes are involved in the regulated ubiquitination of specific protein substrates, which targets them for degradation by the proteasome. Specific F-box proteins recognize different target protein(s), and many specific SCF substrates have been identified including regulators of cell cycle progression and development. Studies have also characterized the protein as an RNA polymerase II elongation factor. Alternative splicing of this gene results in two transcript variants. A related pseudogene has been identified on chromosome 7.

### SKP1A Antibody (monoclonal) (M01) - References

Hsp90-Sgt1 and Skp1 target human Mis12 complexes to ensure efficient formation of kinetochore-microtubule binding sites. Davies AE, et al. *J Cell Biol*, 2010 Apr 19. PMID 20404110. Personalized smoking cessation: interactions between nicotine dose, dependence and quit-success genotype score. Rose JE, et al. *Mol Med*, 2010 Jul-Aug. PMID 20379614. Crystallization and preliminary X-ray characterization of the Skp1-Fbg3 complex. Kumanomidou T, et al. *Acta Crystallogr Sect F Struct Biol Cryst Commun*, 2010 Jan 1. PMID 20057081. The myxoma virus m-t5 ankyrin repeat host range protein is a novel adaptor that coordinately links the cellular signaling pathways mediated by Akt and Skp1 in virus-infected cells. Werden SJ, et al. *J Virol*, 2009 Dec. PMID 19776120. Defining the human deubiquitinating enzyme interaction landscape. Sowa ME, et al. *Cell*, 2009 Jul 23. PMID 19615732.