

## SHC1 Antibody (monoclonal) (M01)

Mouse monoclonal antibody raised against a partial recombinant SHC1.

Catalog # AT3880a

### Specification

---

#### SHC1 Antibody (monoclonal) (M01) - Product Information

Application	IF, WB, IHC, E
Primary Accession	<a href="#">P29353</a>
Other Accession	<a href="#">BC033925</a>
Reactivity	Human
Host	mouse
Clonality	Monoclonal
Isotype	IgG1 Kappa
Calculated MW	62822

#### SHC1 Antibody (monoclonal) (M01) - Additional Information

Gene ID 6464

##### Other Names

SHC-transforming protein 1, SHC-transforming protein 3, SHC-transforming protein A, Src homology 2 domain-containing-transforming protein C1, SH2 domain protein C1, SHC1, SHC, SHCA

##### Target/Specificity

SHC1 (AAH33925, 171 a.a. ~ 280 a.a) partial recombinant protein with GST tag. MW of the GST tag alone is 26 KDa.

##### Dilution

WB~~1:500~1000

##### Format

Clear, colorless solution in phosphate buffered saline, pH 7.2 .

##### Storage

Store at -20°C or lower. Aliquot to avoid repeated freezing and thawing.

##### Precautions

SHC1 Antibody (monoclonal) (M01) is for research use only and not for use in diagnostic or therapeutic procedures.

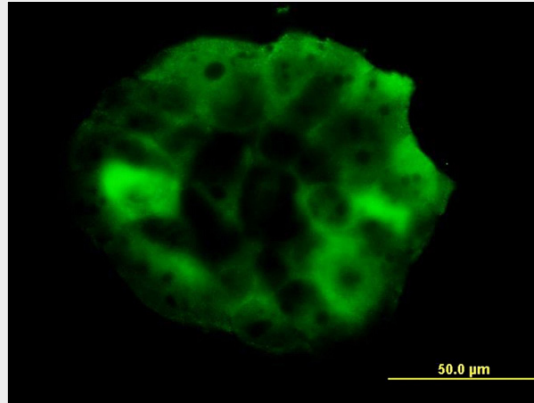
#### SHC1 Antibody (monoclonal) (M01) - Protocols

Provided below are standard protocols that you may find useful for product applications.

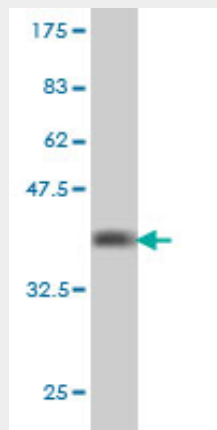
- [Western Blot](#)
- [Blocking Peptides](#)
- [Dot Blot](#)

- [Immunohistochemistry](#)
- [Immunofluorescence](#)
- [Immunoprecipitation](#)
- [Flow Cytometry](#)
- [Cell Culture](#)

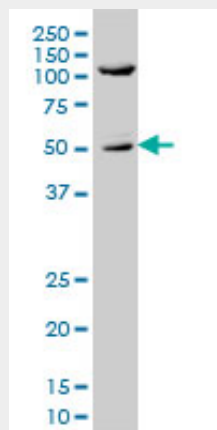
### SHC1 Antibody (monoclonal) (M01) - Images



Immunofluorescence of monoclonal antibody to SHC1 on A-431 cell. [antibody concentration 10 ug/ml]

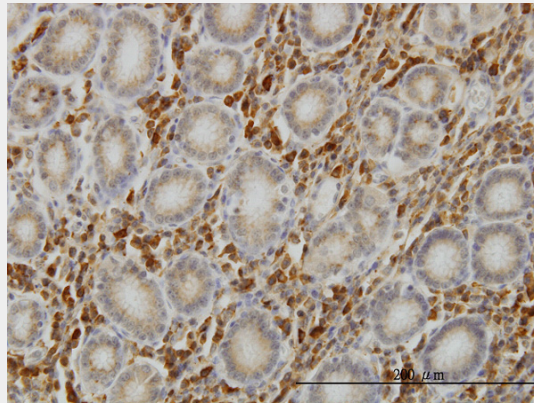


Antibody Reactive Against Recombinant Protein. Western Blot detection against Immunogen (37.73 KDa) .

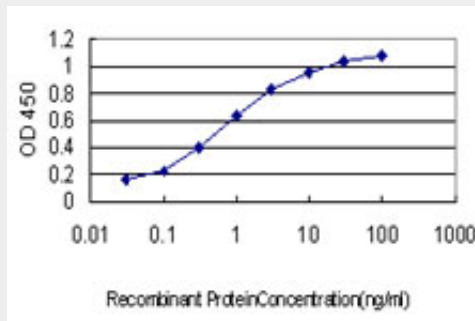


SHC1 monoclonal antibody (M01), clone 3F4 Western Blot analysis of SHC1 expression in A-431 (

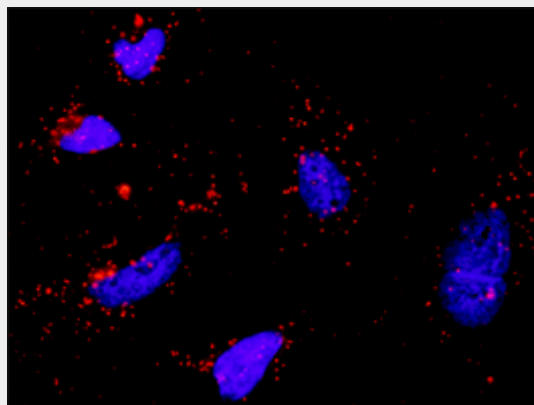
(Cat # AT3880a )



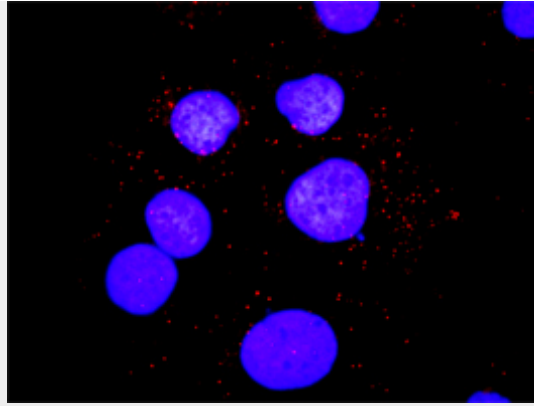
Immunoperoxidase of monoclonal antibody to SHC1 on formalin-fixed paraffin-embedded human stomach. [antibody concentration 1 ug/ml]



Detection limit for recombinant GST tagged SHC1 is approximately 0.03ng/ml as a capture antibody.



Proximity Ligation Analysis of protein-protein interactions between PIK3R1 and SHC1 HeLa cells were stained with anti-PIK3R1 rabbit purified polyclonal 1:1200 and anti-SHC1 mouse monoclonal antibody 1:50. Each red dot represents the detection of protein-protein interaction complex, and nuclei were counterstained with DAPI (blue).



Proximity Ligation Analysis of protein-protein interactions between PIK3R1 and SHC1 Huh7 cells were stained with anti-PIK3R1 rabbit purified polyclonal 1:1200 and anti-SHC1 mouse monoclonal antibody 1:50. Each red dot represents the detection of protein-protein interaction complex, and nuclei were counterstained with DAPI (blue).

### **SHC1 Antibody (monoclonal) (M01) - References**

Oxidative stress alters the regulatory control of p66Shc and Akt in PINK1 deficient cells. Maj MC, et al. *Biochem Biophys Res Commun*, 2010 Aug 27. PMID 20637729. Tarp regulates early Chlamydia-induced host cell survival through interactions with the human adaptor protein SHC1. Mehlitz A, et al. *J Cell Biol*, 2010 Jul 12. PMID 20624904. Hyperglycemia-induced p66shc inhibits insulin-like growth factor I-dependent cell survival via impairment of Src kinase-mediated phosphoinositide-3 kinase/AKT activation in vascular smooth muscle cells. Xi G, et al. *Endocrinology*, 2010 Aug. PMID 20534722. Personalized smoking cessation: interactions between nicotine dose, dependence and quit-success genotype score. Rose JE, et al. *Mol Med*, 2010 Jul-Aug. PMID 20379614. p66Shc is indispensable for phenethyl isothiocyanate-induced apoptosis in human prostate cancer cells. Xiao D, et al. *Cancer Res*, 2010 Apr 15. PMID 20354186.