

## SH3GLB1 Antibody (monoclonal) (M01)

Mouse monoclonal antibody raised against a full length recombinant SH3GLB1.

Catalog # AT3875a

### Specification

---

#### SH3GLB1 Antibody (monoclonal) (M01) - Product Information

Application	WB, IHC, E
Primary Accession	<a href="#">O9Y371</a>
Other Accession	<a href="#">BC007455</a>
Reactivity	Human
Host	mouse
Clonality	Monoclonal
Isotype	IgG1 kappa
Calculated MW	40796

#### SH3GLB1 Antibody (monoclonal) (M01) - Additional Information

Gene ID 51100

##### Other Names

Endophilin-B1, Bax-interacting factor 1, Bif-1, SH3 domain-containing GRB2-like protein B1, SH3GLB1, KIAA0491

##### Target/Specificity

SH3GLB1 (AAH07455, 1 a.a. ~ 365 a.a) full-length recombinant protein with GST tag. MW of the GST tag alone is 26 KDa.

##### Dilution

WB~~1:500~1000

##### Format

Clear, colorless solution in phosphate buffered saline, pH 7.2 .

##### Storage

Store at -20°C or lower. Aliquot to avoid repeated freezing and thawing.

##### Precautions

SH3GLB1 Antibody (monoclonal) (M01) is for research use only and not for use in diagnostic or therapeutic procedures.

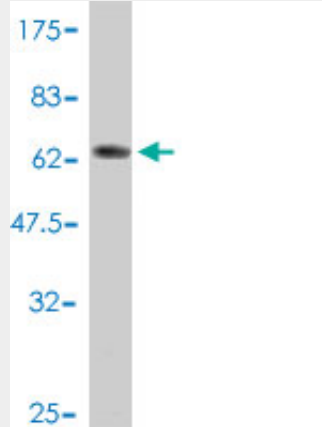
#### SH3GLB1 Antibody (monoclonal) (M01) - Protocols

Provided below are standard protocols that you may find useful for product applications.

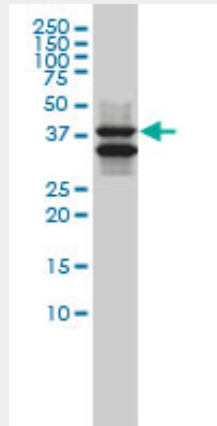
- [Western Blot](#)
- [Blocking Peptides](#)
- [Dot Blot](#)

- [Immunohistochemistry](#)
- [Immunofluorescence](#)
- [Immunoprecipitation](#)
- [Flow Cytometry](#)
- [Cell Culture](#)

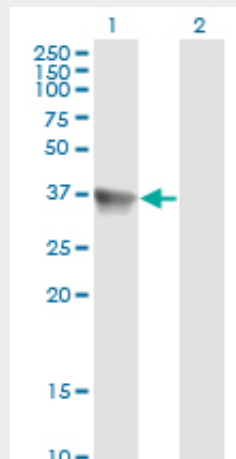
### SH3GLB1 Antibody (monoclonal) (M01) - Images



Antibody Reactive Against Recombinant Protein. Western Blot detection against Immunogen (65.89 KDa) .

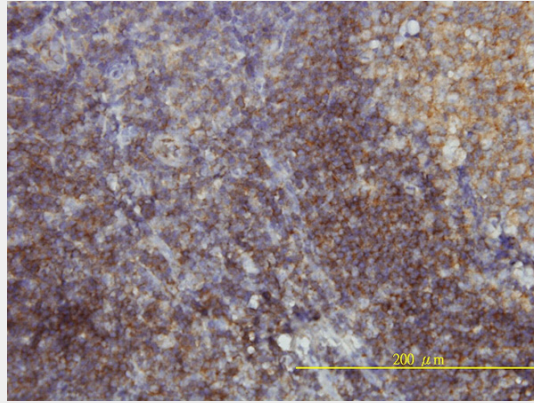


SH3GLB1 monoclonal antibody (M01), clone 1B3-A5 Western Blot analysis of SH3GLB1 expression in K-562 ( (Cat # AT3875a )

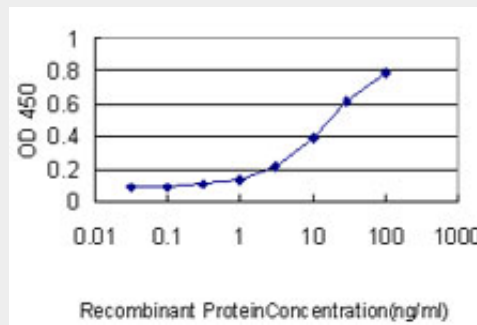


Western Blot analysis of SH3GLB1 expression in transfected 293T cell line by SH3GLB1 monoclonal antibody (M01), clone 1B3-A5.

Lane 1: SH3GLB1 transfected lysate(40.8 KDa).  
Lane 2: Non-transfected lysate.



Immunoperoxidase of monoclonal antibody to SH3GLB1 on formalin-fixed paraffin-embedded human tonsil tissue. [antibody concentration 3 ug/ml]



Detection limit for recombinant GST tagged SH3GLB1 is approximately 0.3ng/ml as a capture antibody.

### SH3GLB1 Antibody (monoclonal) (M01) - References

GSK-3beta promotes cell survival by modulating Bif-1-dependent autophagy and cell death. Yang J, et al. J Cell Sci, 2010 Mar 15. PMID 20159967. Bax activates endophilin B1 oligomerization and lipid membrane vesiculation. Rostovtseva TK, et al. J Biol Chem, 2009 Dec 4. PMID 19805544. Somatic mutation of pro-cell death Bif-1 gene is rare in common human cancers. Kim MS, et al. APMIS, 2008 Oct. PMID 19132989. Bif-1 and Bax expression in cutaneous Merkel cell carcinoma. Schlauder SM, et al. J Cutan Pathol, 2009 Jan. PMID 19125733. Endophilin B1/Bif-1 stimulates BAX activation independently from its capacity to produce large scale membrane morphological rearrangements. Etxebarria A, et al. J Biol Chem, 2009 Feb 13. PMID 19074440.