

SFTPD Antibody (monoclonal) (M02)

Mouse monoclonal antibody raised against a full length recombinant SFTPD.

Catalog # AT3849a

Specification

SFTPD Antibody (monoclonal) (M02) - Product Information

Application	WB, IHC
Primary Accession	P35247
Other Accession	BC022318
Reactivity	Human
Host	mouse
Clonality	Monoclonal
Isotype	IgG1 Kappa
Calculated MW	37728

SFTPD Antibody (monoclonal) (M02) - Additional Information

Gene ID 6441

Other Names

Pulmonary surfactant-associated protein D, PSP-D, SP-D, Collectin-7, Lung surfactant protein D, SFTPD, COLEC7, PSPD, SFTP4

Target/Specificity

SFTPD (AAH22318.1, 21 a.a. ~ 375 a.a) full-length recombinant protein with GST tag. MW of the GST tag alone is 26 KDa.

Dilution

WB~~1:500~1000

Format

Clear, colorless solution in phosphate buffered saline, pH 7.2 .

Storage

Store at -20°C or lower. Aliquot to avoid repeated freezing and thawing.

Precautions

SFTPD Antibody (monoclonal) (M02) is for research use only and not for use in diagnostic or therapeutic procedures.

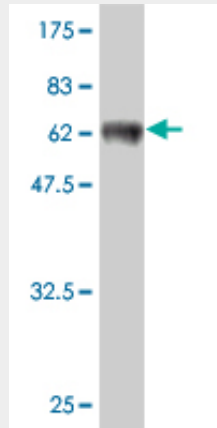
SFTPD Antibody (monoclonal) (M02) - Protocols

Provided below are standard protocols that you may find useful for product applications.

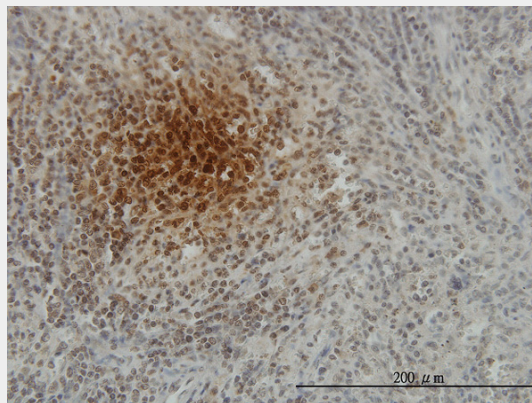
- [Western Blot](#)
- [Blocking Peptides](#)
- [Dot Blot](#)

- [Immunohistochemistry](#)
- [Immunofluorescence](#)
- [Immunoprecipitation](#)
- [Flow Cytometry](#)
- [Cell Culture](#)

SFTPD Antibody (monoclonal) (M02) - Images



Antibody Reactive Against Recombinant Protein. Western Blot detection against Immunogen (64.79 kDa) .



Immunoperoxidase of monoclonal antibody to SFTPD on formalin-fixed paraffin-embedded human spleen. [antibody concentration 3 ug/ml]

SFTPD Antibody (monoclonal) (M02) - References

Gene-gene interaction between tuberculosis candidate genes in a South African population. de Wit E, et al. Mamm Genome, 2010 Aug 27. PMID 20799037. Clara cell secretory protein and surfactant protein-D do not predict bronchiolitis obliterans syndrome after lung transplantation. Paantjens AW, et al. Transplantation, 2010 Aug 15. PMID 20683434. Variation at the NFATC2 Locus Increases the Risk of Thiazolidinedione-Induced Edema in the Diabetes REduction Assessment with ramipril and rosiglitazone Medication (DREAM) Study. Bailey SD, et al. Diabetes Care, 2010 Jul 13. PMID 20628086. Surfactant protein-D predicts survival in patients with idiopathic pulmonary fibrosis. Barlo NP, et al. Sarcoidosis Vasc Diffuse Lung Dis, 2009 Jul. PMID 20560296. Interleukin-9 polymorphism in infants with respiratory syncytial virus infection: an opposite effect in boys and girls. Schuurhof A, et al. Pediatr Pulmonol, 2010 Jun. PMID 20503287.

SFTPD Antibody (monoclonal) (M02) - Citations

- [Surfactant proteins A and D are related to severity of the disease, pathogenic bacteria and comorbidity in patients with chronic rhinosinusitis with and without nasal polyps.](#)

