

**SFTPD Antibody (monoclonal) (M01)****Mouse monoclonal antibody raised against a full length recombinant SFTPD.****Catalog # AT3848a****Specification**

---

**SFTPD Antibody (monoclonal) (M01) - Product Information**

Application	<b>WB</b>
Primary Accession	<a href="#">P35247</a>
Other Accession	<a href="#">BC022318</a>
Reactivity	<b>Human</b>
Host	<b>mouse</b>
Clonality	<b>Monoclonal</b>
Isotype	<b>IgG1 Kappa</b>
Calculated MW	<b>37728</b>

**SFTPD Antibody (monoclonal) (M01) - Additional Information****Gene ID** 6441**Other Names**

Pulmonary surfactant-associated protein D, PSP-D, SP-D, Collectin-7, Lung surfactant protein D, SFTPD, COLEC7, PSPD, SFTP4

**Target/Specificity**

SFTPD (AAH22318.1, 21 a.a. ~ 375 a.a) full-length recombinant protein with GST tag. MW of the GST tag alone is 26 KDa.

**Dilution**

WB~~1:500~1000

**Format**

Clear, colorless solution in phosphate buffered saline, pH 7.2 .

**Storage**

Store at -20°C or lower. Aliquot to avoid repeated freezing and thawing.

**Precautions**

SFTPD Antibody (monoclonal) (M01) is for research use only and not for use in diagnostic or therapeutic procedures.

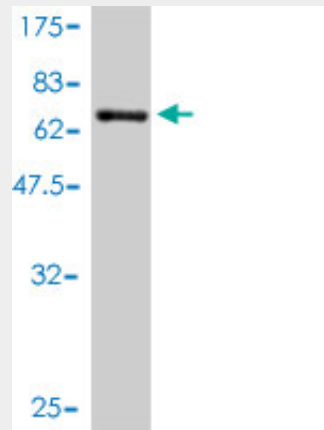
**SFTPD Antibody (monoclonal) (M01) - Protocols**

Provided below are standard protocols that you may find useful for product applications.

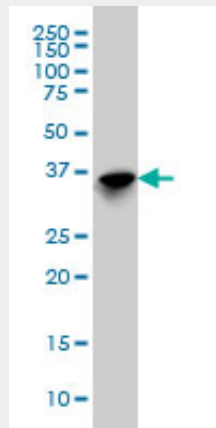
- [Western Blot](#)
- [Blocking Peptides](#)
- [Dot Blot](#)

- [Immunohistochemistry](#)
- [Immunofluorescence](#)
- [Immunoprecipitation](#)
- [Flow Cytometry](#)
- [Cell Culture](#)

### SFTPD Antibody (monoclonal) (M01) - Images



Antibody Reactive Against Recombinant Protein. Western Blot detection against Immunogen (64.79 kDa) .



SFTPD monoclonal antibody (M01), clone 3E6 Western Blot analysis of SFTPD expression in IMR-32 ( (Cat # AT3848a )

### SFTPD Antibody (monoclonal) (M01) - References

Gene-gene interaction between tuberculosis candidate genes in a South African population. de Wit E, et al. *Mamm Genome*, 2010 Aug 27. PMID 20799037. Clara cell secretory protein and surfactant protein-D do not predict bronchiolitis obliterans syndrome after lung transplantation. Paantjens AW, et al. *Transplantation*, 2010 Aug 15. PMID 20683434. Variation at the NFATC2 Locus Increases the Risk of Thiazolidinedione-Induced Edema in the Diabetes REduction Assessment with ramipril and rosiglitazone Medication (DREAM) Study. Bailey SD, et al. *Diabetes Care*, 2010 Jul 13. PMID 20628086. Surfactant protein-D predicts survival in patients with idiopathic pulmonary fibrosis. Barlo NP, et al. *Sarcoidosis Vasc Diffuse Lung Dis*, 2009 Jul. PMID 20560296. Interleukin-9 polymorphism in infants with respiratory syncytial virus infection: an opposite effect in boys and girls. Schuurhof A, et al. *Pediatr Pulmonol*, 2010 Jun. PMID 20503287.