

## **SFRS3 Antibody (monoclonal) (M08)**

Mouse monoclonal antibody raised against a partial recombinant SFRS3.

Catalog # AT3846a

### **Specification**

---

#### **SFRS3 Antibody (monoclonal) (M08) - Product Information**

Application	IF, WB, E
Primary Accession	<a href="#">P84103</a>
Other Accession	<a href="#">NM_003017</a>
Reactivity	Human, Mouse, Rat
Host	mouse
Clonality	Monoclonal
Isotype	IgG1 Kappa
Calculated MW	19330

#### **SFRS3 Antibody (monoclonal) (M08) - Additional Information**

**Gene ID** 6428

##### **Other Names**

Serine/arginine-rich splicing factor 3, Pre-mRNA-splicing factor SRP20, Splicing factor, arginine/serine-rich 3, SRSF3, SFRS3, SRP20

##### **Target/Specificity**

SFRS3 (NP\_003008, 1 a.a. ~ 85 a.a) partial recombinant protein with GST tag. MW of the GST tag alone is 26 KDa.

##### **Dilution**

WB~~1:500~1000

##### **Format**

Clear, colorless solution in phosphate buffered saline, pH 7.2 .

##### **Storage**

Store at -20°C or lower. Aliquot to avoid repeated freezing and thawing.

##### **Precautions**

SFRS3 Antibody (monoclonal) (M08) is for research use only and not for use in diagnostic or therapeutic procedures.

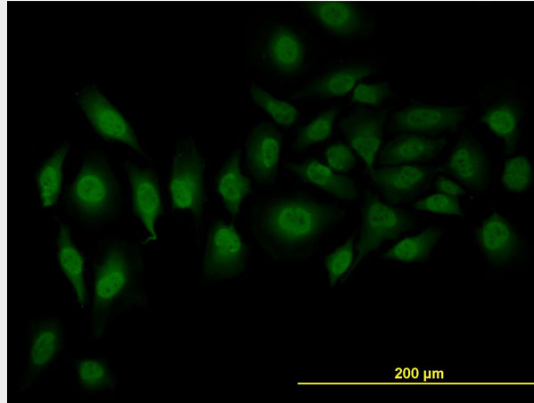
#### **SFRS3 Antibody (monoclonal) (M08) - Protocols**

Provided below are standard protocols that you may find useful for product applications.

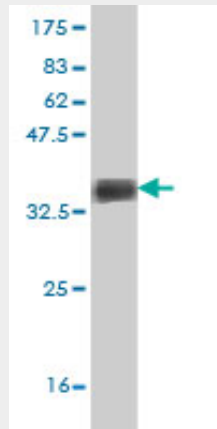
- [Western Blot](#)
- [Blocking Peptides](#)
- [Dot Blot](#)

- [Immunohistochemistry](#)
- [Immunofluorescence](#)
- [Immunoprecipitation](#)
- [Flow Cytometry](#)
- [Cell Culture](#)

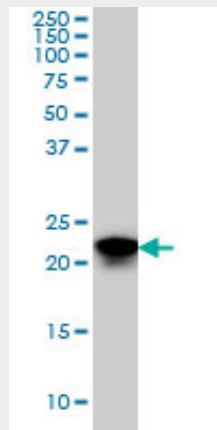
### SFRS3 Antibody (monoclonal) (M08) - Images



Immunofluorescence of monoclonal antibody to SFRS3 on HeLa cell. [antibody concentration 10 ug/ml]

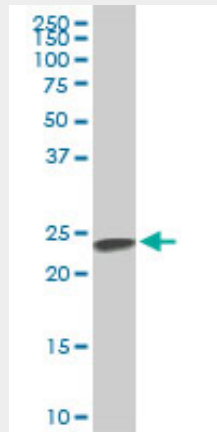


Antibody Reactive Against Recombinant Protein. Western Blot detection against Immunogen (35.09 KDa) .

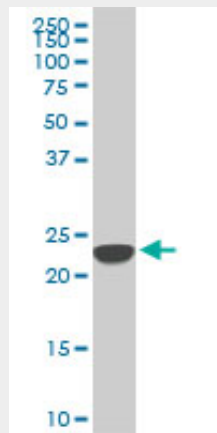


SFRS3 monoclonal antibody (M08), clone 2D2 Western Blot analysis of SFRS3 expression in HeLa

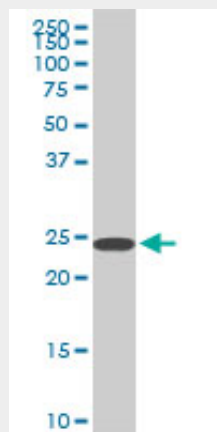
( (Cat # AT3846a )



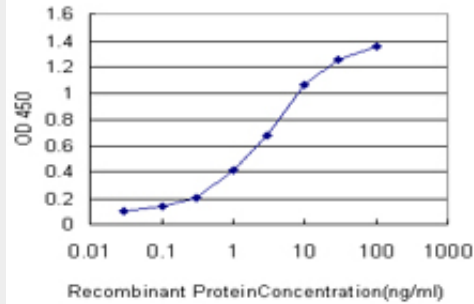
SFRS3 monoclonal antibody (M08), clone 2D2. Western Blot analysis of SFRS3 expression in PC-12 ( (Cat # AT3846a )



SFRS3 monoclonal antibody (M08), clone 2D2. Western Blot analysis of SFRS3 expression in Raw 264.7 ( (Cat # AT3846a )



SFRS3 monoclonal antibody (M08), clone 2D2. Western Blot analysis of SFRS3 expression in NIH/3T3 ( (Cat # AT3846a )



Detection limit for recombinant GST tagged SFRS3 is approximately 0.1ng/ml as a capture antibody.

### **SFRS3 Antibody (monoclonal) (M08) - Background**

The protein encoded by this gene is a member of the serine/arginine (SR)-rich family of pre-mRNA splicing factors, which constitute part of the spliceosome. Each of these factors contains an RNA recognition motif (RRM) for binding RNA and an RS domain for binding other proteins. The RS domain is rich in serine and arginine residues and facilitates interaction between different SR splicing factors. In addition to being critical for mRNA splicing, the SR proteins have also been shown to be involved in mRNA export from the nucleus and in translation. Two transcript variants, one protein-coding and the other non-coding, have been found for this gene.

### **SFRS3 Antibody (monoclonal) (M08) - References**

1. An shRNA-Based Screen of Splicing Regulators Identifies SFRS3 as a Negative Regulator of IL-1 $\beta$  Secretion. Moura-Alves P, Neves-Costa A, Raquel H, Pacheco TR, D'Almeida B, Rodrigues R, Cadima-Couto I, Chora A, Oliveira M, Gama-Carvalho M, Hacohen N, Moita LF. *PLoS One*. 2011;6(5):e19829. Epub 2011 May 17.
2. LBH589 induces up to 10-fold SMN protein levels by several independent mechanisms and is effective even in cells from SMA patients non-responsive to valproate. Garbes L, Riessland M, Holker I, Heller R, Hauke J, Trankle C, Coras R, Blumcke I, Hahnen E, Wirth B. *Hum Mol Genet*. 2009 Oct 1;18(19):3645-58. Epub 2009 Jul 7.