

SFN Antibody (monoclonal) (M01)

Mouse monoclonal antibody raised against a full length recombinant SFN.

Catalog # AT3840a

Specification

SFN Antibody (monoclonal) (M01) - Product Information

Application	IP, WB, IHC
Primary Accession	P31947
Other Accession	BC000329
Reactivity	Human
Host	Mouse
Clonality	Monoclonal
Isotype	IgG1 kappa
Calculated MW	27774

SFN Antibody (monoclonal) (M01) - Additional Information**Gene ID** 2810**Other Names**

14-3-3 protein sigma, Epithelial cell marker protein 1, Stratifin, SFN, HME1

Target/Specificity

SFN (AAH00329.1, 1 a.a. ~ 248 a.a) full-length recombinant protein with GST tag. MW of the GST tag alone is 26 KDa.

Dilution

WB~~1:500~1000

Format

Clear, colorless solution in phosphate buffered saline, pH 7.2 .

Storage

Store at -20°C or lower. Aliquot to avoid repeated freezing and thawing.

Precautions

SFN Antibody (monoclonal) (M01) is for research use only and not for use in diagnostic or therapeutic procedures.

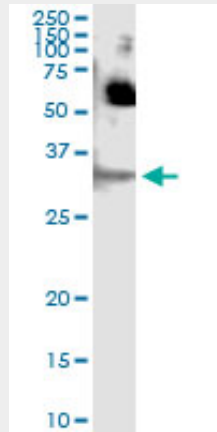
SFN Antibody (monoclonal) (M01) - Protocols

Provided below are standard protocols that you may find useful for product applications.

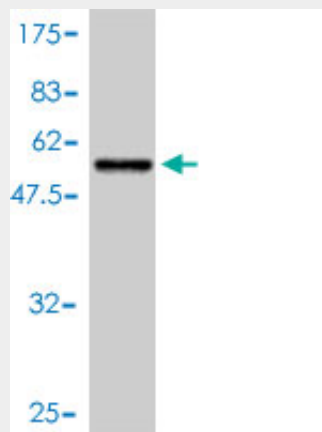
- [Western Blot](#)
- [Blocking Peptides](#)
- [Dot Blot](#)
- [Immunohistochemistry](#)

- [Immunofluorescence](#)
- [Immunoprecipitation](#)
- [Flow Cytometry](#)
- [Cell Culture](#)

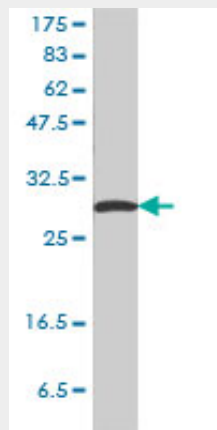
SFN Antibody (monoclonal) (M01) - Images



Immunoprecipitation of SFN transfected lysate using anti-SFN monoclonal antibody and Protein A Magnetic Bead ([U0007](#)), and immunoblotted with SFN MaxPab rabbit polyclonal antibody.

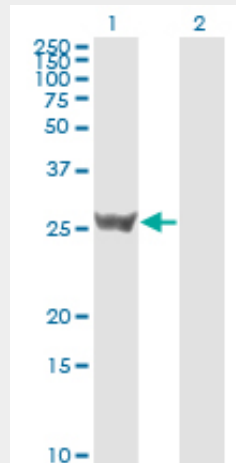


Antibody Reactive Against Recombinant Protein. Western Blot detection against Immunogen (53.02 KDa) .



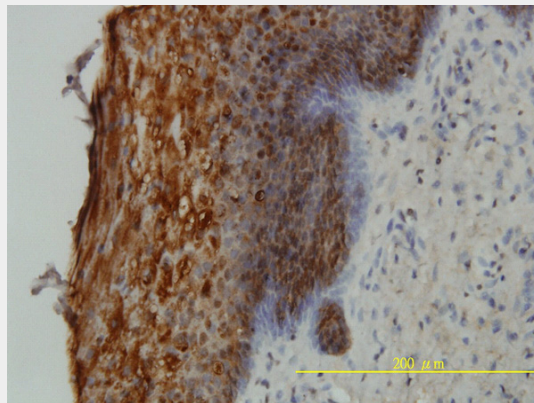
SFN monoclonal antibody (M01), clone 3C3 Western Blot analysis of SFN expression in HeLa ((Cat

AT3840a)



Western Blot analysis of SFN expression in transfected 293T cell line by SFN monoclonal antibody (M01), clone 3C3.

Lane 1: SFN transfected lysate(27.8 KDa).
Lane 2: Non-transfected lysate.



Immunoperoxidase of monoclonal antibody to SFN on formalin-fixed paraffin-embedded human uterine cervix tissue. [antibody concentration 5 ug/ml]

SFN Antibody (monoclonal) (M01) - References

1.An inverse switch in DNA base excision and strand break repair contributes to melphalan resistance in multiple myeloma cells.Sousa MM, Zub KA, Aas PA, Hanssen-Bauer A, Demirovic A, Sarno A, Tian E, Liabakk NB, Slupphaug G. *PLoS One*. 2013;8(2):e55493. doi: 10.1371/journal.pone.0055493. Epub 2013 Feb 6.