

SFMBT1 Antibody (monoclonal) (M02)

Mouse monoclonal antibody raised against a partial recombinant SFMBT1.

Catalog # AT3839a

Specification

SFMBT1 Antibody (monoclonal) (M02) - Product Information

| | |
|-------------------|---------------------------|
| Application | WB, E |
| Primary Accession | O9UHJ3 |
| Other Accession | NM_016329 |
| Reactivity | Human |
| Host | mouse |
| Clonality | Monoclonal |
| Isotype | IgG2a Kappa |
| Calculated MW | 98141 |

SFMBT1 Antibody (monoclonal) (M02) - Additional Information**Gene ID** 51460**Other Names**

Scm-like with four MBT domains protein 1, hSFMBT, Renal ubiquitous protein 1, SFMBT1, RU1

Target/Specificity

SFMBT1 (NP_057413, 121 a.a. ~ 230 a.a) partial recombinant protein with GST tag. MW of the GST tag alone is 26 KDa.

Dilution

WB~~1:500~1000

Format

Clear, colorless solution in phosphate buffered saline, pH 7.2 .

Storage

Store at -20°C or lower. Aliquot to avoid repeated freezing and thawing.

Precautions

SFMBT1 Antibody (monoclonal) (M02) is for research use only and not for use in diagnostic or therapeutic procedures.

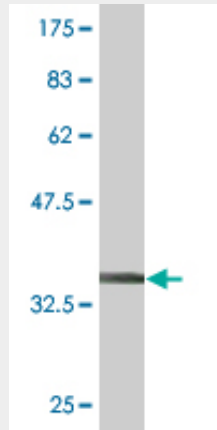
SFMBT1 Antibody (monoclonal) (M02) - Protocols

Provided below are standard protocols that you may find useful for product applications.

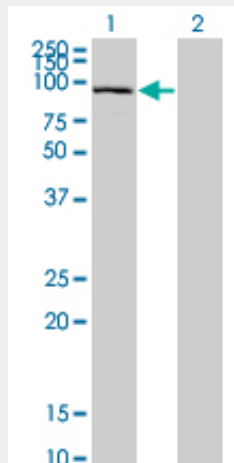
- [Western Blot](#)
- [Blocking Peptides](#)
- [Dot Blot](#)
- [Immunohistochemistry](#)

- [Immunofluorescence](#)
- [Immunoprecipitation](#)
- [Flow Cytometry](#)
- [Cell Culture](#)

SFMBT1 Antibody (monoclonal) (M02) - Images

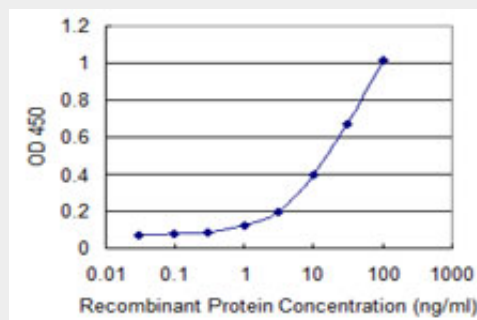


Antibody Reactive Against Recombinant Protein. Western Blot detection against Immunogen (37.51 KDa) .



Western Blot analysis of SFMBT1 expression in transfected 293T cell line by SFMBT1 monoclonal antibody (M02), clone 2A1.

Lane 1: SFMBT1 transfected lysate(98.141 KDa).
Lane 2: Non-transfected lysate.



Detection limit for recombinant GST tagged SFMBT1 is 0.3 ng/ml as a capture antibody.

SFMBT1 Antibody (monoclonal) (M02) - Background

This gene shares high similarity with the Drosophila Scm (sex comb on midleg) gene. It encodes a protein which contains four malignant brain tumor repeat (mbt) domains and may be involved in antigen recognition. Several alternative splice variants that encode the same protein have been characterized.

SFMBT1 Antibody (monoclonal) (M02) - References

Human SFMBT is a transcriptional repressor protein that selectively binds the N-terminal tail of histone H3. Wu S, et al. FEBS Lett, 2007 Jul 10. PMID 17599839. Diversification of transcriptional modulation: large-scale identification and characterization of putative alternative promoters of human genes. Kimura K, et al. Genome Res, 2006 Jan. PMID 16344560. Towards a proteome-scale map of the human protein-protein interaction network. Rual JF, et al. Nature, 2005 Oct 20. PMID 16189514. The status, quality, and expansion of the NIH full-length cDNA project: the Mammalian Gene Collection (MGC). Gerhard DS, et al. Genome Res, 2004 Oct. PMID 15489334. Generation and initial analysis of more than 15,000 full-length human and mouse cDNA sequences. Strausberg RL, et al. Proc Natl Acad Sci U S A, 2002 Dec 24. PMID 12477932.