

## SF3B2 Antibody (monoclonal) (M01)

Mouse monoclonal antibody raised against a partial recombinant SF3B2.

Catalog # AT3838a

### Specification

---

#### SF3B2 Antibody (monoclonal) (M01) - Product Information

Application	IF, WB, IHC
Primary Accession	<a href="#">Q13435</a>
Other Accession	<a href="#">NM_006842</a>
Reactivity	Human, Mouse, Rat
Host	mouse
Clonality	Monoclonal
Isotype	IgG2a Kappa
Calculated MW	100228

#### SF3B2 Antibody (monoclonal) (M01) - Additional Information

Gene ID 10992

##### Other Names

Splicing factor 3B subunit 2, Pre-mRNA-splicing factor SF3b 145 kDa subunit, SF3b145, SF3b150, Spliceosome-associated protein 145, SAP 145, SF3B2, SAP145

##### Target/Specificity

SF3B2 (NP\_006833, 592 a.a. ~ 645 a.a) partial recombinant protein with GST tag. MW of the GST tag alone is 26 KDa.

##### Dilution

WB ~ 1:500 ~ 1000

##### Format

Clear, colorless solution in phosphate buffered saline, pH 7.2 .

##### Storage

Store at -20°C or lower. Aliquot to avoid repeated freezing and thawing.

##### Precautions

SF3B2 Antibody (monoclonal) (M01) is for research use only and not for use in diagnostic or therapeutic procedures.

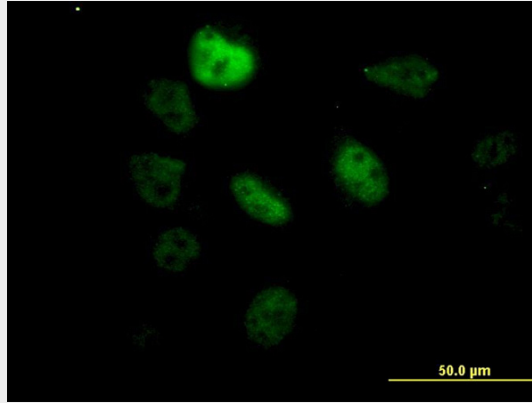
#### SF3B2 Antibody (monoclonal) (M01) - Protocols

Provided below are standard protocols that you may find useful for product applications.

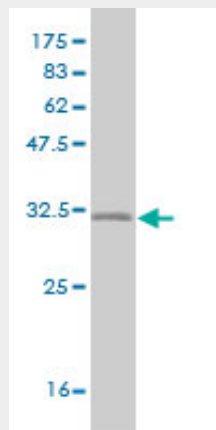
- [Western Blot](#)
- [Blocking Peptides](#)
- [Dot Blot](#)

- [Immunohistochemistry](#)
- [Immunofluorescence](#)
- [Immunoprecipitation](#)
- [Flow Cytometry](#)
- [Cell Culture](#)

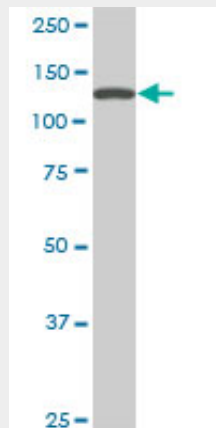
### SF3B2 Antibody (monoclonal) (M01) - Images



Immunofluorescence of monoclonal antibody to SF3B2 on HeLa cell. [antibody concentration 60 ug/ml]

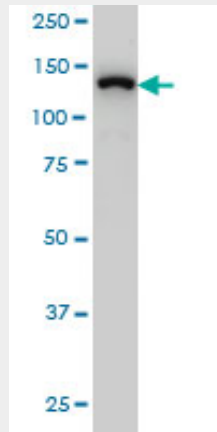


Antibody Reactive Against Recombinant Protein. Western Blot detection against Immunogen (31.68 KDa) .

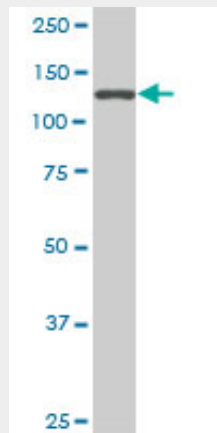


SF3B2 monoclonal antibody (M01), clone 5D2. Western Blot analysis of SF3B2 expression in

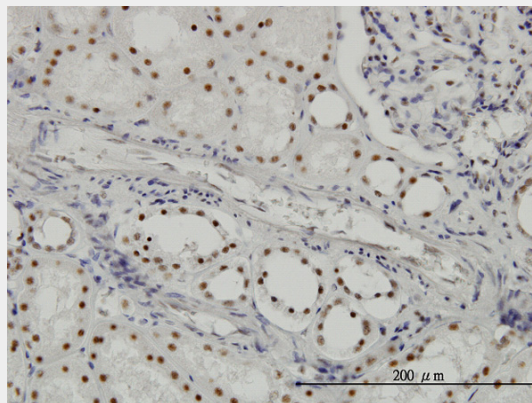
PC-12 ( (Cat # AT3838a )



SF3B2 monoclonal antibody (M01), clone 5D2 Western Blot analysis of SF3B2 expression in Hela S3 NE ( (Cat # AT3838a )



SF3B2 monoclonal antibody (M01), clone 5D2. Western Blot analysis of SF3B2 expression in NIH/3T3 ( (Cat # AT3838a )



Immunoperoxidase of monoclonal antibody to SF3B2 on formalin-fixed paraffin-embedded human kidney. [antibody concentration 6 ug/ml]

### **SF3B2 Antibody (monoclonal) (M01) - Background**

This gene encodes subunit 2 of the splicing factor 3b protein complex. Splicing factor 3b, together with splicing factor 3a and a 12S RNA unit, forms the U2 small nuclear ribonucleoproteins complex (U2 snRNP). The splicing factor 3b/3a complex binds pre-mRNA upstream of the intron's branch site in a sequence-independent manner and may anchor the U2 snRNP to the pre-mRNA. Splicing factor

3b is also a component of the minor U12-type spliceosome. Subunit 2 associates with pre-mRNA upstream of the branch site at the anchoring site. Subunit 2 also interacts directly with subunit 4 of the splicing factor 3b complex. Subunit 2 is a highly hydrophilic protein with a proline-rich N-terminus and a glutamate-rich stretch in the C-terminus.

### **SF3B2 Antibody (monoclonal) (M01) - References**

Systematic analysis of the protein interaction network for the human transcription machinery reveals the identity of the 7SK capping enzyme. Jeronimo C, et al. Mol Cell, 2007 Jul 20. PMID 17643375. Large-scale mapping of human protein-protein interactions by mass spectrometry. Ewing RM, et al. Mol Syst Biol, 2007. PMID 17353931. Global, in vivo, and site-specific phosphorylation dynamics in signaling networks. Olsen JV, et al. Cell, 2006 Nov 3. PMID 17081983. Human immunodeficiency virus type 1 Vpr induces G2 checkpoint activation by interacting with the splicing factor SAP145. Terada Y, et al. Mol Cell Biol, 2006 Nov. PMID 16923959. Induction of G2 arrest and binding to cyclophilin A are independent phenotypes of human immunodeficiency virus type 1 Vpr. Ardon O, et al. J Virol, 2006 Apr. PMID 16571786.