

SF1 Antibody (monoclonal) (M01)

Mouse monoclonal antibody raised against a partial recombinant SF1.

Catalog # AT3835a

Specification

SF1 Antibody (monoclonal) (M01) - Product Information

Application	IF, IP, WB, IHC, E
Primary Accession	Q15637
Other Accession	NM_004630
Reactivity	Human, Mouse
Host	mouse
Clonality	Monoclonal
Isotype	IgG2a Kappa
Calculated MW	68330

SF1 Antibody (monoclonal) (M01) - Additional Information

Gene ID 7536

Other Names

Splicing factor 1, Mammalian branch point-binding protein, BBP, mBBP, Transcription factor ZFM1, Zinc finger gene in MEN1 locus, Zinc finger protein 162, SF1, ZFM1, ZNF162

Target/Specificity

SF1 (NP_004621, 1 a.a. ~ 110 a.a) partial recombinant protein with GST tag. MW of the GST tag alone is 26 KDa.

Dilution

WB~~1:500~1000

Format

Clear, colorless solution in phosphate buffered saline, pH 7.2 .

Storage

Store at -20°C or lower. Aliquot to avoid repeated freezing and thawing.

Precautions

SF1 Antibody (monoclonal) (M01) is for research use only and not for use in diagnostic or therapeutic procedures.

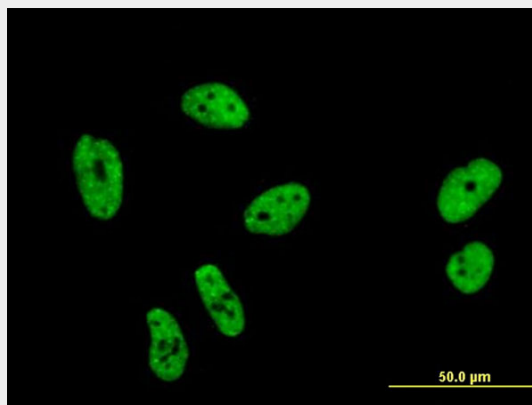
SF1 Antibody (monoclonal) (M01) - Protocols

Provided below are standard protocols that you may find useful for product applications.

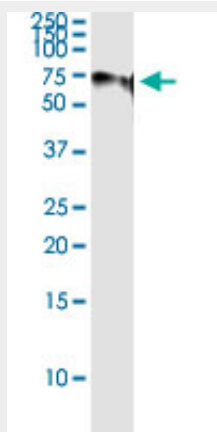
- [Western Blot](#)
- [Blocking Peptides](#)
- [Dot Blot](#)

- [Immunohistochemistry](#)
- [Immunofluorescence](#)
- [Immunoprecipitation](#)
- [Flow Cytometry](#)
- [Cell Culture](#)

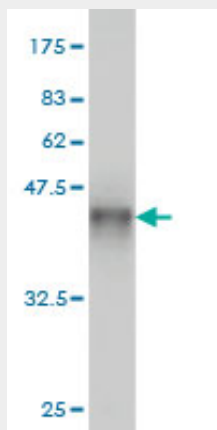
SF1 Antibody (monoclonal) (M01) - Images



Immunofluorescence of monoclonal antibody to SF1 on HeLa cell . [antibody concentration 10 ug/ml]

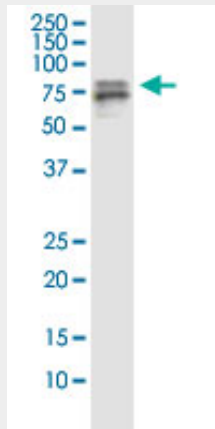


Immunoprecipitation of SF1 transfected lysate using anti-SF1 monoclonal antibody and Protein A Magnetic Bead ([U0007](#)), and immunoblotted with SF1 monoclonal antibody.

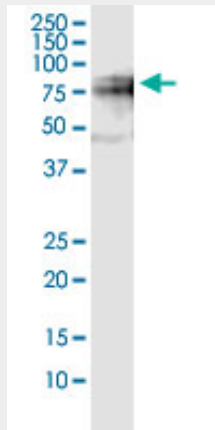


Antibody Reactive Against Recombinant Protein. Western Blot detection against Immunogen

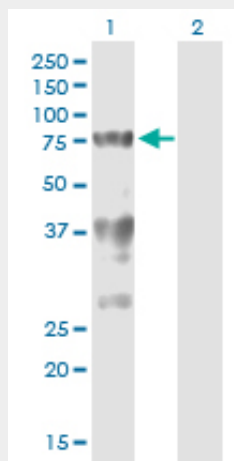
(37.84 KDa) .



SF1 monoclonal antibody (M01), clone 2E12. Western Blot analysis of SF1 expression in HeLa.



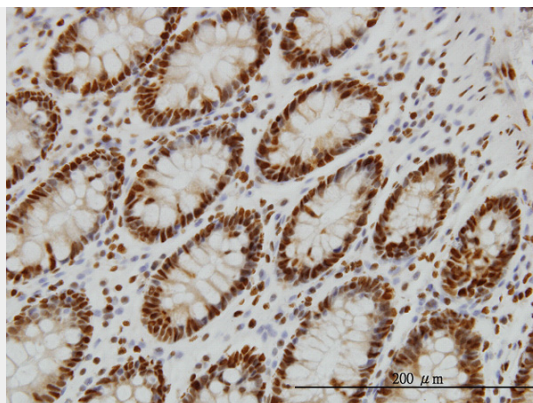
SF1 monoclonal antibody (M01), clone 2E12. Western Blot analysis of SF1 expression in NIH/3T3.



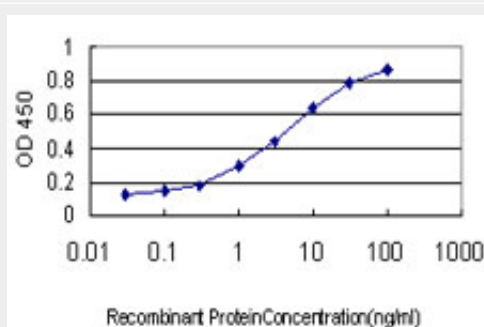
Western Blot analysis of SF1 expression in transfected 293T cell line by SF1 monoclonal antibody (M01), clone 2E12.

Lane 1: SF1 transfected lysate (Predicted MW: 59.7 KDa).

Lane 2: Non-transfected lysate.



Immunoperoxidase of monoclonal antibody to SF1 on formalin-fixed paraffin-embedded human colon. [antibody concentration 3 ug/ml]



Detection limit for recombinant GST tagged SF1 is approximately 0.03ng/ml as a capture antibody.

SF1 Antibody (monoclonal) (M01) - Background

This gene encodes a nuclear pre-mRNA splicing factor. The encoded protein specifically recognizes the intron branch point sequence and is required for the early stages of spliceosome assembly. Alternate splicing results in multiple transcript variants.

SF1 Antibody (monoclonal) (M01) - References

SEDLIN forms homodimers: characterisation of SEDLIN mutations and their interactions with transcription factors MBP1, PITX1 and SF1. Jeyabalan J, et al. PLoS One, 2010 May 14. PMID 20498720. Dimerization and protein binding specificity of the U2AF homology motif of the splicing factor Puf60. Corsini L, et al. J Biol Chem, 2009 Jan 2. PMID 18974054. Search for cellular partners of human papillomavirus type 16 E2 protein. Olejnik-Schmidt AK, et al. Arch Virol, 2008. PMID 18305892. Splicing factors SF1 and U2AF associate in extraspliceosomal complexes. Rino J, et al. Mol Cell Biol, 2008 May. PMID 18285458. Toward a confocal subcellular atlas of the human proteome. Barbe L, et al. Mol Cell Proteomics, 2008 Mar. PMID 18029348.