

SET Antibody (monoclonal) (M01)

Mouse monoclonal antibody raised against a full length recombinant SET.

Catalog # AT3831a

Specification

SET Antibody (monoclonal) (M01) - Product Information

Application	IF, WB, E
Primary Accession	O01105
Other Accession	BC032749
Reactivity	Human
Host	mouse
Clonality	Monoclonal
Isotype	IgG1 Kappa
Calculated MW	33489

SET Antibody (monoclonal) (M01) - Additional Information

Gene ID 6418

Other Names

Protein SET, HLA-DR-associated protein II, Inhibitor of granzyme A-activated DNase, IGAAD, PHAPII, Phosphatase 2A inhibitor I2PP2A, I-2PP2A, Template-activating factor I, TAF-I, SET

Target/Specificity

SET (AAH32749.1, 1 a.a. ~ 277 a.a) full-length recombinant protein with GST tag. MW of the GST tag alone is 26 KDa.

Dilution

WB~~1:500~1000

Format

Clear, colorless solution in phosphate buffered saline, pH 7.2 .

Storage

Store at -20°C or lower. Aliquot to avoid repeated freezing and thawing.

Precautions

SET Antibody (monoclonal) (M01) is for research use only and not for use in diagnostic or therapeutic procedures.

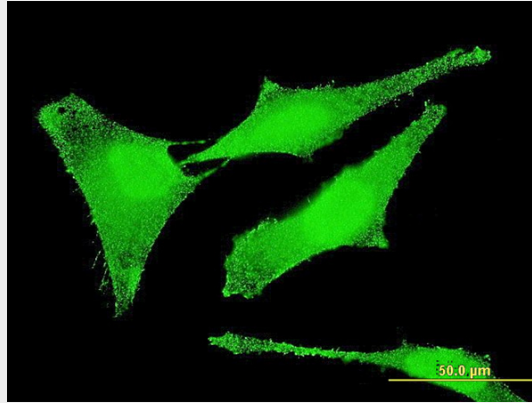
SET Antibody (monoclonal) (M01) - Protocols

Provided below are standard protocols that you may find useful for product applications.

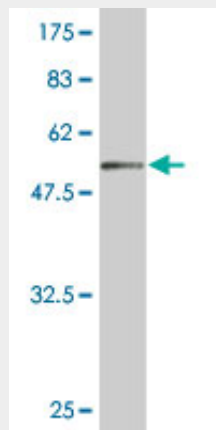
- [Western Blot](#)
- [Blocking Peptides](#)
- [Dot Blot](#)

- [Immunohistochemistry](#)
- [Immunofluorescence](#)
- [Immunoprecipitation](#)
- [Flow Cytometry](#)
- [Cell Culture](#)

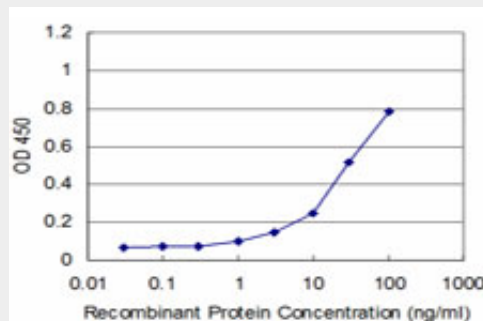
SET Antibody (monoclonal) (M01) - Images



Immunofluorescence of monoclonal antibody to SET on HeLa cell . [antibody concentration 10 ug/ml]



Antibody Reactive Against Recombinant Protein. Western Blot detection against Immunogen (56.21 KDa) .



Detection limit for recombinant GST tagged SET is approximately 3ng/ml as a capture antibody.

SET Antibody (monoclonal) (M01) - References

Maternal genes and facial clefts in offspring: a comprehensive search for genetic associations in

two population-based cleft studies from Scandinavia. Jugessur A, et al. PLoS One, 2010 Jul 9. PMID 20634891. Decreased expression of microRNA-199b increases protein levels of SET (protein phosphatase 2A inhibitor) in human choriocarcinoma. Chao A, et al. Cancer Lett, 2010 May 1. PMID 19900756. Defining the human deubiquitinating enzyme interaction landscape. Sowa ME, et al. Cell, 2009 Jul 23. PMID 19615732. FE65 binds Teashirt, inhibiting expression of the primate-specific caspase-4. Kajiwarra Y, et al. PLoS One, 2009. PMID 19343227. Jak2 inhibition deactivates Lyn kinase through the SET-PP2A-SHP1 pathway, causing apoptosis in drug-resistant cells from chronic myelogenous leukemia patients. Samanta AK, et al. Oncogene, 2009 Apr 9. PMID 19234487.