

## **SERPINE2 Antibody (monoclonal) (M01)**

Mouse monoclonal antibody raised against a partial recombinant SERPINE2.

Catalog # AT3825a

### **Specification**

---

#### **SERPINE2 Antibody (monoclonal) (M01) - Product Information**

Application	WB
Primary Accession	<a href="#">P07093</a>
Other Accession	<a href="#">NM_006216</a>
Reactivity	Human
Host	mouse
Clonality	Monoclonal
Isotype	IgG2a Kappa
Calculated MW	44002

#### **SERPINE2 Antibody (monoclonal) (M01) - Additional Information**

**Gene ID** 5270

##### **Other Names**

Glia-derived nexin, GDN, Peptidase inhibitor 7, PI-7, Protease nexin 1, PN-1, Protease nexin I, Serpin E2, SERPINE2, PI7, PN1

##### **Target/Specificity**

SERPINE2 (NP\_006207, 72 a.a. ~ 172 a.a) partial recombinant protein with GST tag. MW of the GST tag alone is 26 KDa.

##### **Dilution**

WB~~1:500~1000

##### **Format**

Clear, colorless solution in phosphate buffered saline, pH 7.2 .

##### **Storage**

Store at -20°C or lower. Aliquot to avoid repeated freezing and thawing.

##### **Precautions**

SERPINE2 Antibody (monoclonal) (M01) is for research use only and not for use in diagnostic or therapeutic procedures.

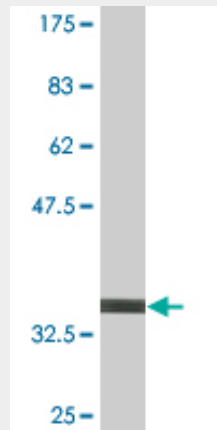
#### **SERPINE2 Antibody (monoclonal) (M01) - Protocols**

Provided below are standard protocols that you may find useful for product applications.

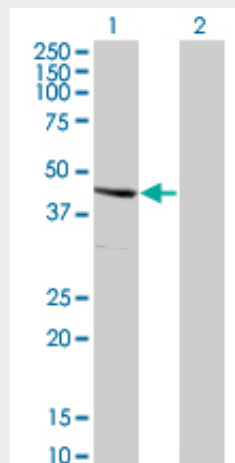
- [Western Blot](#)
- [Blocking Peptides](#)
- [Dot Blot](#)

- [Immunohistochemistry](#)
- [Immunofluorescence](#)
- [Immunoprecipitation](#)
- [Flow Cytometry](#)
- [Cell Culture](#)

### SERPINE2 Antibody (monoclonal) (M01) - Images



Antibody Reactive Against Recombinant Protein. Western Blot detection against Immunogen (36.85 KDa) .



Western Blot analysis of SERPINE2 expression in transfected 293T cell line by SERPINE2 monoclonal antibody (M01), clone 3G12.

Lane 1: SERPINE2 transfected lysate(44.002 KDa).

Lane 2: Non-transfected lysate.

### SERPINE2 Antibody (monoclonal) (M01) - References

Association of COPD candidate genes with CT emphysema and airway phenotypes in severe COPD. Kim WJ, et al. Eur Respir J, 2010 Jun 4. PMID 20525719. Genetics of chronic obstructive pulmonary disease: a case-control study in Bergen, Norway. S?rheim IC, et al. Clin Respir J, 2008 Oct. PMID 20298363. Cluster analysis in severe emphysema subjects using phenotype and genotype data: an exploratory investigation. Cho MH, et al. Respir Res, 2010 Mar 16. PMID 20233420. SERPINE2 is a possible candidate promotor for lymph node metastasis in testicular cancer. Nagahara A, et al. Biochem Biophys Res Commun, 2010 Jan 22. PMID 20035713. SERPINE2 polymorphisms and chronic

obstructive pulmonary disease. Cha SI, et al. J Korean Med Sci, 2009 Dec. PMID 19949669.