

SERPINB3 Antibody (monoclonal) (M01)

Mouse monoclonal antibody raised against a partial recombinant SERPINB3.

Catalog # AT3822a

Specification

SERPINB3 Antibody (monoclonal) (M01) - Product Information

Application	IP, WB, E
Primary Accession	P29508
Other Accession	NM_006919
Reactivity	Human
Host	mouse
Clonality	Monoclonal
Isotype	IgG2a Kappa
Calculated MW	44565

SERPINB3 Antibody (monoclonal) (M01) - Additional Information

Gene ID 6317

Other Names

Serpin B3, Protein T4-A, Squamous cell carcinoma antigen 1, SCCA-1, SERPINB3, SCCA, SCCA1

Target/Specificity

SERPINB3 (NP_008850, 276 a.a. ~ 390 a.a) partial recombinant protein with GST tag. MW of the GST tag alone is 26 KDa.

Dilution

WB~~1:500~1000

Format

Clear, colorless solution in phosphate buffered saline, pH 7.2 .

Storage

Store at -20°C or lower. Aliquot to avoid repeated freezing and thawing.

Precautions

SERPINB3 Antibody (monoclonal) (M01) is for research use only and not for use in diagnostic or therapeutic procedures.

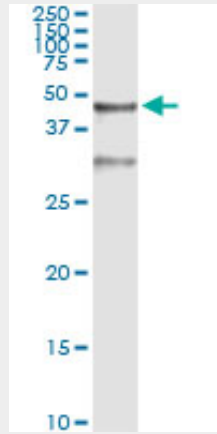
SERPINB3 Antibody (monoclonal) (M01) - Protocols

Provided below are standard protocols that you may find useful for product applications.

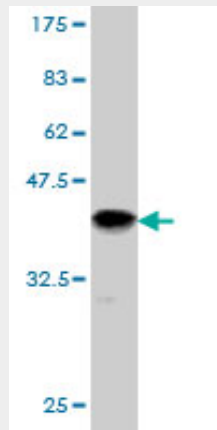
- [Western Blot](#)
- [Blocking Peptides](#)
- [Dot Blot](#)
- [Immunohistochemistry](#)

- [Immunofluorescence](#)
- [Immunoprecipitation](#)
- [Flow Cytometry](#)
- [Cell Culture](#)

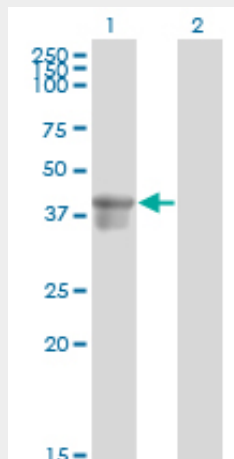
SERPINB3 Antibody (monoclonal) (M01) - Images



Immunoprecipitation of SERPINB3 transfected lysate using anti-SERPINB3 monoclonal antibody and Protein A Magnetic Bead ([U0007](#)), and immunoblotted with SERPINB3 MaxPab rabbit polyclonal antibody.

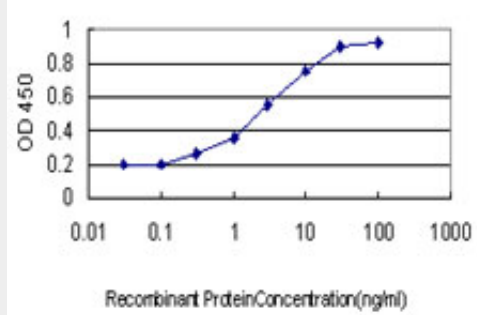


Antibody Reactive Against Recombinant Protein. Western Blot detection against Immunogen (38.39 KDa) .



Western Blot analysis of SERPINB3 expression in transfected 293T cell line by SERPINB3 monoclonal antibody (M01), clone 2F5.

Lane 1: SERPINB3 transfected lysate(44.6 KDa).
Lane 2: Non-transfected lysate.



Detection limit for recombinant GST tagged SERPINB3 is approximately 0.3ng/ml as a capture antibody.

SERPINB3 Antibody (monoclonal) (M01) - References

1. Label-Free Cancer Markers Detection by Capacitance Biochip. Carrara S, Bhalla V, Stagni C, Benini L, Ferretti A, Valle F, Gallotta A, Ricco B, Samori B. Sens. Actuators B: Chem. (2008), doi:10.1016/j.snb.2008.09.050