

SERPINB2 Antibody (monoclonal) (M08)

Mouse monoclonal antibody raised against a partial recombinant SERPINB2.

Catalog # AT3821a

Specification

SERPINB2 Antibody (monoclonal) (M08) - Product Information

Application	IP, WB, E
Primary Accession	P05120
Other Accession	BC012609
Reactivity	Human
Host	mouse
Clonality	Monoclonal
Isotype	IgG2b Kappa
Calculated MW	46596

SERPINB2 Antibody (monoclonal) (M08) - Additional Information

Gene ID 5055

Other Names

Plasminogen activator inhibitor 2, PAI-2, Monocyte Arg-serpin, Placental plasminogen activator inhibitor, Serpin B2, Urokinase inhibitor, SERPINB2, PAI2, PLANH2

Target/Specificity

SERPINB2 (AAH12609, 1 a.a. ~ 100 a.a) partial recombinant protein with GST tag. MW of the GST tag alone is 26 KDa.

Dilution

WB~~1:500~1000

Format

Clear, colorless solution in phosphate buffered saline, pH 7.2 .

Storage

Store at -20°C or lower. Aliquot to avoid repeated freezing and thawing.

Precautions

SERPINB2 Antibody (monoclonal) (M08) is for research use only and not for use in diagnostic or therapeutic procedures.

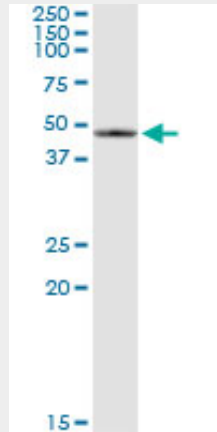
SERPINB2 Antibody (monoclonal) (M08) - Protocols

Provided below are standard protocols that you may find useful for product applications.

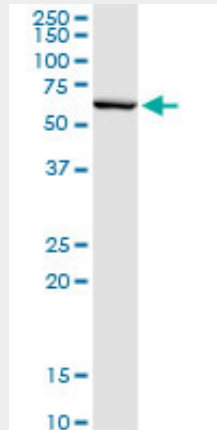
- [Western Blot](#)
- [Blocking Peptides](#)
- [Dot Blot](#)

- [Immunohistochemistry](#)
- [Immunofluorescence](#)
- [Immunoprecipitation](#)
- [Flow Cytometry](#)
- [Cell Culture](#)

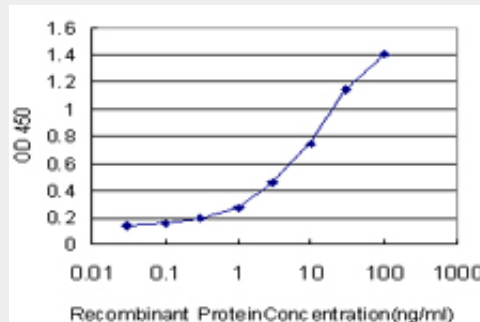
SERPINB2 Antibody (monoclonal) (M08) - Images



Immunoprecipitation of SERPINB2 transfected lysate using anti-SERPINB2 monoclonal antibody and Protein A Magnetic Bead ([U0007](#)), and immunoblotted with SERPINB2 MaxPab rabbit polyclonal antibody.



SERPINB2 monoclonal antibody (M08), clone 3A9. Western Blot analysis of SERPINB2 expression in human pancreas.



Detection limit for recombinant GST tagged SERPINB2 is approximately 0.3ng/ml as a capture antibody.

SERPINB2 Antibody (monoclonal) (M08) - References

Evaluation of candidate stromal epithelial cross-talk genes identifies association between risk of serous ovarian cancer and TERT, a cancer susceptibility hot-spot. Johnatty SE, et al. PLoS Genet, 2010 Jul 8. PMID 20628624. Variation at the NFATC2 Locus Increases the Risk of Thiazolinedione-Induced Edema in the Diabetes REduction Assessment with ramipril and rosiglitazone Medication (DREAM) Study. Bailey SD, et al. Diabetes Care, 2010 Jul 13. PMID 20628086. Polymorphisms in innate immunity genes and risk of childhood leukemia. Han S, et al. Hum Immunol, 2010 Jul. PMID 20438785. Risk of meningioma and common variation in genes related to innate immunity. Rajaraman P, et al. Cancer Epidemiol Biomarkers Prev, 2010 May. PMID 20406964. Up-regulation of plasminogen activator inhibitor-2 is associated with high-risk HPV and grade of cervical lesion at baseline but does not predict outcomes of high-risk HPV infections or incident CIN. Syrj?nen S, et al. Am J Clin Pathol, 2009 Dec. PMID 19926580.