

**SERPINA6 Antibody (monoclonal) (M02)**

Mouse monoclonal antibody raised against a full length recombinant SERPINA6.

Catalog # AT3819a

**Specification**

---

**SERPINA6 Antibody (monoclonal) (M02) - Product Information**

Application	WB, E
Primary Accession	<a href="#">P08185</a>
Other Accession	<a href="#">BC058021</a>
Reactivity	Human
Host	mouse
Clonality	Monoclonal
Isotype	IgG1 Kappa
Calculated MW	45141

**SERPINA6 Antibody (monoclonal) (M02) - Additional Information****Gene ID** 866**Other Names**

Corticosteroid-binding globulin, CBG, Serpin A6, Transcortin, SERPINA6, CBG

**Target/Specificity**

SERPINA6 (AAH58021, 23 a.a. ~ 405 a.a) full-length recombinant protein with GST tag. MW of the GST tag alone is 26 KDa.

**Dilution**

WB~~1:500~1000

**Format**

Clear, colorless solution in phosphate buffered saline, pH 7.2 .

**Storage**

Store at -20°C or lower. Aliquot to avoid repeated freezing and thawing.

**Precautions**

SERPINA6 Antibody (monoclonal) (M02) is for research use only and not for use in diagnostic or therapeutic procedures.

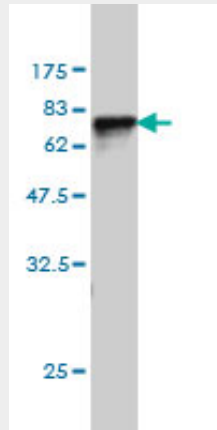
**SERPINA6 Antibody (monoclonal) (M02) - Protocols**

Provided below are standard protocols that you may find useful for product applications.

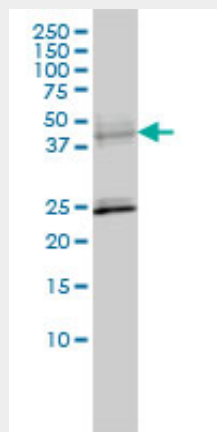
- [Western Blot](#)
- [Blocking Peptides](#)
- [Dot Blot](#)
- [Immunohistochemistry](#)

- [Immunofluorescence](#)
- [Immunoprecipitation](#)
- [Flow Cytometry](#)
- [Cell Culture](#)

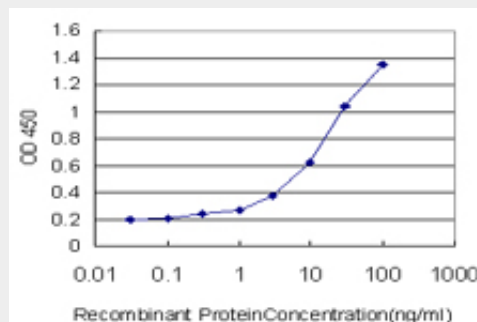
### SERPINA6 Antibody (monoclonal) (M02) - Images



Antibody Reactive Against Recombinant Protein. Western Blot detection against Immunogen (67.87 KDa) .



SERPINA6 monoclonal antibody (M02), clone 1D9 Western Blot analysis of SERPINA6 expression in HL-60 ( (Cat # AT3819a )



Detection limit for recombinant GST tagged SERPINA6 is approximately 0.03ng/ml as a capture antibody.

### SERPINA6 Antibody (monoclonal) (M02) - Background

This gene encodes an alpha-globulin protein with corticosteroid-binding properties. This is the major transport protein for glucocorticoids and progestins in the blood of most vertebrates. The gene localizes to a chromosomal region containing several closely related serine protease inhibitors which may have evolved by duplication events.

### **SERPINA6 Antibody (monoclonal) (M02) - References**

Variation at the NFATC2 Locus Increases the Risk of Thiazolinedione-Induced Edema in the Diabetes REduction Assessment with ramipril and rosiglitazone Medication (DREAM) Study. Bailey SD, et al. Diabetes Care, 2010 Jul 13. PMID 20628086. Genetic variation in neuroendocrine genes associates with somatic symptoms in the general population: results from the EPIFUND study. Holliday KL, et al. J Psychosom Res, 2010 May. PMID 20403506. Personalized smoking cessation: interactions between nicotine dose, dependence and quit-success genotype score. Rose JE, et al. Mol Med, 2010 Jul-Aug. PMID 20379614. Plasma sex hormone-binding globulin, corticosteroid-binding globulin, cortisol, and free cortisol levels in outpatients attending a lipid disorders clinic: a cross-sectional study of 1137 subjects. Lewis JG, et al. Horm Metab Res, 2010 Apr. PMID 20354921. Effect of mutations of the human serpin protein corticosteroid-binding globulin on cortisol-binding, thermal and protease sensitivity. Braun BC, et al. J Steroid Biochem Mol Biol, 2010 May. PMID 20226861.