

## **SEMA7A Antibody (monoclonal) (M01)**

Mouse monoclonal antibody raised against a partial recombinant SEMA7A.

Catalog # AT3809a

### **Specification**

---

#### **SEMA7A Antibody (monoclonal) (M01) - Product Information**

Application	WB, E
Primary Accession	<a href="#">O75326</a>
Other Accession	<a href="#">NM_003612</a>
Reactivity	Human
Host	mouse
Clonality	Monoclonal
Isotype	IgG2a Kappa
Calculated MW	74824

#### **SEMA7A Antibody (monoclonal) (M01) - Additional Information**

**Gene ID** 8482

##### **Other Names**

Semaphorin-7A, CDw108, JMH blood group antigen, John-Milton-Hargen human blood group Ag, Semaphorin-K1, Sema K1, Semaphorin-L, Sema L, CD108, SEMA7A, CD108, SEMAL

##### **Target/Specificity**

SEMA7A (NP\_003603, 536 a.a. ~ 633 a.a) partial recombinant protein with GST tag. MW of the GST tag alone is 26 KDa.

##### **Dilution**

WB~~1:500~1000

##### **Format**

Clear, colorless solution in phosphate buffered saline, pH 7.2 .

##### **Storage**

Store at -20°C or lower. Aliquot to avoid repeated freezing and thawing.

##### **Precautions**

SEMA7A Antibody (monoclonal) (M01) is for research use only and not for use in diagnostic or therapeutic procedures.

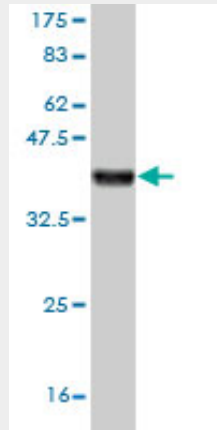
#### **SEMA7A Antibody (monoclonal) (M01) - Protocols**

Provided below are standard protocols that you may find useful for product applications.

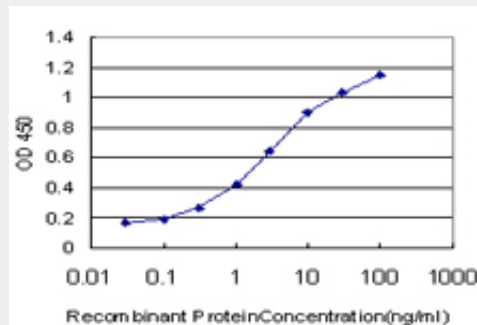
- [Western Blot](#)
- [Blocking Peptides](#)
- [Dot Blot](#)

- [Immunohistochemistry](#)
- [Immunofluorescence](#)
- [Immunoprecipitation](#)
- [Flow Cytometry](#)
- [Cell Culture](#)

### SEMA7A Antibody (monoclonal) (M01) - Images



Antibody Reactive Against Recombinant Protein. Western Blot detection against Immunogen (36.52 KDa) .



Detection limit for recombinant GST tagged SEMA7A is approximately 0.03ng/ml as a capture antibody.

### SEMA7A Antibody (monoclonal) (M01) - Background

The protein encoded by this gene binds to cell surfaces through a glycosylphosphatidylinositol (GPI) linkage. The encoded glycoprotein is found on activated lymphocytes and erythrocytes. This protein may be involved in immunomodulatory and neuronal processes. Defects in this gene can result in loss of bone mineral density (BMD). Three transcript variants encoding different isoforms have been found for this gene.

### SEMA7A Antibody (monoclonal) (M01) - References

The semaphorin 7A receptor Plexin C1 is lost during melanoma metastasis. Lazova R, et al. *Am J Dermatopathol*, 2009 Apr. PMID 19318806. Plexin C1, a receptor for semaphorin 7a, inactivates cofilin and is a potential tumor suppressor for melanoma progression. Scott GA, et al. *J Invest Dermatol*, 2009 Apr. PMID 18987670. Rapid detection of JMHA antibodies with recombinant Sema7A (CD108) protein and the particle gel immunoassay. Seltsam A, et al. *Transfusion*, 2008 Jun. PMID 18422858. Semaphorin 7a promotes spreading and dendricity in human melanocytes through beta1-integrins. Scott GA, et al. *J Invest Dermatol*, 2008 Jan. PMID 17671519. Semaphorin 7A plays a critical role in TGF-beta1-induced pulmonary fibrosis. Kang HR, et al. *J Exp Med*, 2007 May 14. PMID

17485510.