

SEMA4B Antibody (monoclonal) (M03)

Mouse monoclonal antibody raised against a partial recombinant SEMA4B.

Catalog # AT3807a

Specification

SEMA4B Antibody (monoclonal) (M03) - Product Information

Application	WB, E
Primary Accession	O9NPR2
Other Accession	NM_020210
Reactivity	Human
Host	mouse
Clonality	Monoclonal
Isotype	IgG2a Kappa
Calculated MW	92766

SEMA4B Antibody (monoclonal) (M03) - Additional Information**Gene ID** 10509**Other Names**

Semaphorin-4B, SEMA4B, KIAA1745, SEMAC

Target/Specificity

SEMA4B (NP_064595, 592 a.a. ~ 689 a.a) partial recombinant protein with GST tag. MW of the GST tag alone is 26 KDa.

Dilution

WB ~ ~ 1:500 ~ 1000

Format

Clear, colorless solution in phosphate buffered saline, pH 7.2 .

Storage

Store at -20°C or lower. Aliquot to avoid repeated freezing and thawing.

Precautions

SEMA4B Antibody (monoclonal) (M03) is for research use only and not for use in diagnostic or therapeutic procedures.

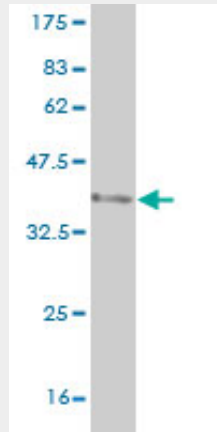
SEMA4B Antibody (monoclonal) (M03) - Protocols

Provided below are standard protocols that you may find useful for product applications.

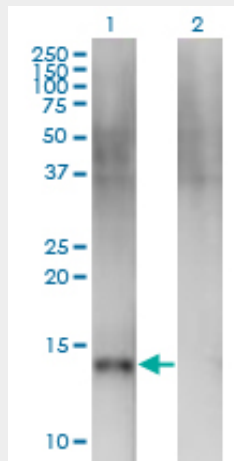
- [Western Blot](#)
- [Blocking Peptides](#)
- [Dot Blot](#)
- [Immunohistochemistry](#)

- [Immunofluorescence](#)
- [Immunoprecipitation](#)
- [Flow Cytometry](#)
- [Cell Culture](#)

SEMA4B Antibody (monoclonal) (M03) - Images

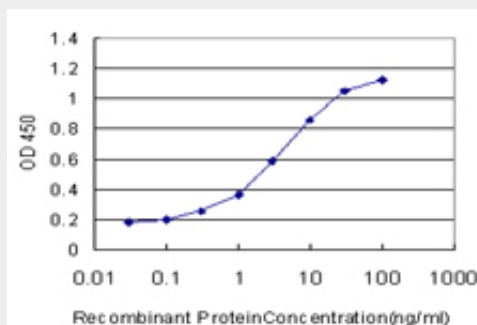


Antibody Reactive Against Recombinant Protein. Western Blot detection against Immunogen (36.52 KDa) .



Western Blot analysis of SEMA4B expression in transfected 293T cell line by SEMA4B monoclonal antibody (M03), clone 4B2.

Lane 1: SEMA4B transfected lysate (Predicted MW: 10.89 KDa).
Lane 2: Non-transfected lysate.



Detection limit for recombinant GST tagged SEMA4B is approximately 0.1ng/ml as a capture antibody.

SEMA4B Antibody (monoclonal) (M03) - References

Variation at the NFATC2 Locus Increases the Risk of Thiazolinedione-Induced Edema in the Diabetes REduction Assessment with ramipril and rosiglitazone Medication (DREAM) Study. Bailey SD, et al. Diabetes Care, 2010 Jul 13. PMID 20628086. Gene-centric association signals for lipids and apolipoproteins identified via the HumanCVD BeadChip. Talmud PJ, et al. Am J Hum Genet, 2009 Nov. PMID 19913121. CLCP1 interacts with semaphorin 4B and regulates motility of lung cancer cells. Nagai H, et al. Oncogene, 2007 Jun 7. PMID 17213806. Global, in vivo, and site-specific phosphorylation dynamics in signaling networks. Olsen JV, et al. Cell, 2006 Nov 3. PMID 17081983. Human plasma N-glycoproteome analysis by immunoaffinity subtraction, hydrazide chemistry, and mass spectrometry. Liu T, et al. J Proteome Res, 2005 Nov-Dec. PMID 16335952.