

SEC22L1 Antibody (monoclonal) (M01)

Mouse monoclonal antibody raised against a partial recombinant SEC22L1.

Catalog # AT3805a

Specification

SEC22L1 Antibody (monoclonal) (M01) - Product Information

Application	IF, WB, E
Primary Accession	O75396
Other Accession	NM_004892
Reactivity	Human, Rat
Host	mouse
Clonality	Monoclonal
Isotype	IgG2a Lambda
Calculated MW	24741

SEC22L1 Antibody (monoclonal) (M01) - Additional Information

Gene ID 9554

Other Names

Vesicle-trafficking protein SEC22b, ER-Golgi SNARE of 24 kDa, ERS-24, ERS24, SEC22 vesicle-trafficking protein homolog B, SEC22 vesicle-trafficking protein-like 1, SEC22B, SEC22L1

Target/Specificity

SEC22L1 (NP_004883, 1 a.a. ~ 110 a.a) partial recombinant protein with GST tag. MW of the GST tag alone is 26 kDa.

Dilution

WB~~1:500~1000

Format

Clear, colorless solution in phosphate buffered saline, pH 7.2 .

Storage

Store at -20°C or lower. Aliquot to avoid repeated freezing and thawing.

Precautions

SEC22L1 Antibody (monoclonal) (M01) is for research use only and not for use in diagnostic or therapeutic procedures.

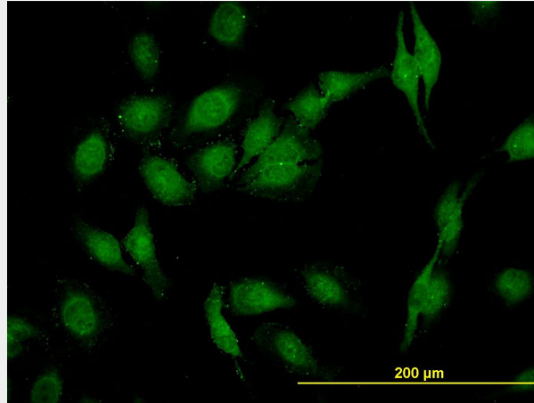
SEC22L1 Antibody (monoclonal) (M01) - Protocols

Provided below are standard protocols that you may find useful for product applications.

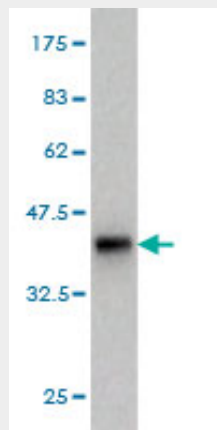
- [Western Blot](#)
- [Blocking Peptides](#)
- [Dot Blot](#)

- [Immunohistochemistry](#)
- [Immunofluorescence](#)
- [Immunoprecipitation](#)
- [Flow Cytometry](#)
- [Cell Culture](#)

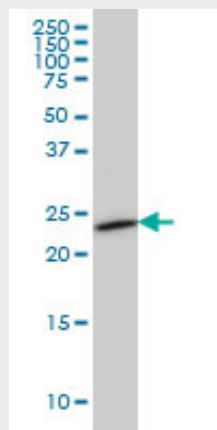
SEC22L1 Antibody (monoclonal) (M01) - Images



Immunofluorescence of monoclonal antibody to SEC22L1 on HeLa cell. [antibody concentration 10 ug/ml]

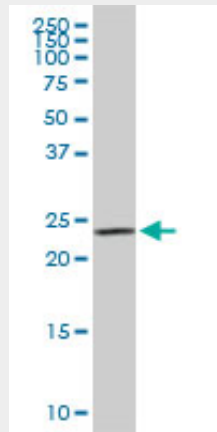


Antibody Reactive Against Recombinant Protein. Western Blot detection against Immunogen (37.84 KDa) .

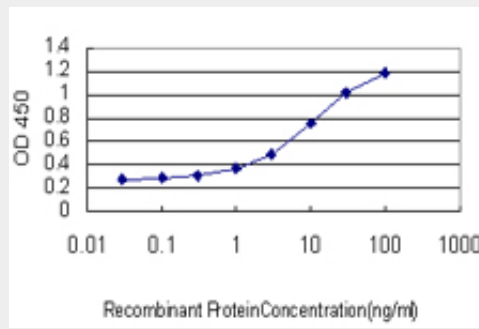


SEC22L1 monoclonal antibody (M01), clone 1E1 Western Blot analysis of SEC22L1 expression in

HeLa ((Cat # AT3805a)



SEC22L1 monoclonal antibody (M01), clone 1E1. Western Blot analysis of SEC22L1 expression in PC-12 ((Cat # AT3805a)



Detection limit for recombinant GST tagged SEC22L1 is approximately 0.3ng/ml as a capture antibody.

SEC22L1 Antibody (monoclonal) (M01) - Background

The protein encoded by this gene is a member of the SEC22 family of vesicle trafficking proteins. It seems to complex with SNARE and it is thought to play a role in the ER-Golgi protein trafficking. This protein has strong similarity to *Mus musculus* and *Cricetulus griseus* proteins.

SEC22L1 Antibody (monoclonal) (M01) - References

1. A VAMP7/Vti1a SNARE complex distinguishes a non-conventional traffic route to the cell surface used by KChIP1 and Kv4 potassium channels. Flowerdew SE, Burgoyne RD. *Biochem J.* 2009 Mar 15;418(3):529-40. 2. Quantitative and temporal proteome analysis of butyrate-treated colorectal cancer cells. Tan HT, Tan S, Lin Q, Lim TK, Hew CL, Chung MC. *Mol Cell Proteomics.* 2008 Jun;7(6):1174-85. Epub 2008 Mar 14.