

## SCYL1 Antibody (monoclonal) (M02)

Mouse monoclonal antibody raised against a partial recombinant SCYL1.

Catalog # AT3798a

### Specification

---

#### SCYL1 Antibody (monoclonal) (M02) - Product Information

Application	WB, E
Primary Accession	<a href="#">O96KG9</a>
Other Accession	<a href="#">BC009967</a>
Reactivity	Human, Mouse, Rat
Host	mouse
Clonality	Monoclonal
Isotype	IgG2a Kappa
Calculated MW	89631

#### SCYL1 Antibody (monoclonal) (M02) - Additional Information

Gene ID 57410

##### Other Names

N-terminal kinase-like protein, Coated vesicle-associated kinase of 90 kDa, SCY1-like protein 1, Telomerase regulation-associated protein, Telomerase transcriptional element-interacting factor, Teratoma-associated tyrosine kinase, SCYL1, CVAK90, GKLP, NTKL, TAPK, TEIF, TRAP

##### Target/Specificity

SCYL1 (AAH09967, 373 a.a. ~ 472 a.a) partial recombinant protein with GST tag. MW of the GST tag alone is 26 kDa.

##### Dilution

WB ~ 1:500 ~ 1000

##### Format

Clear, colorless solution in phosphate buffered saline, pH 7.2 .

##### Storage

Store at -20°C or lower. Aliquot to avoid repeated freezing and thawing.

##### Precautions

SCYL1 Antibody (monoclonal) (M02) is for research use only and not for use in diagnostic or therapeutic procedures.

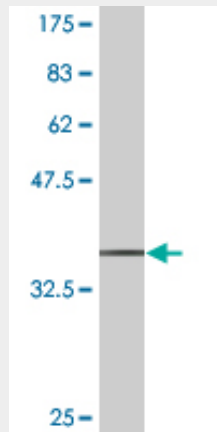
#### SCYL1 Antibody (monoclonal) (M02) - Protocols

Provided below are standard protocols that you may find useful for product applications.

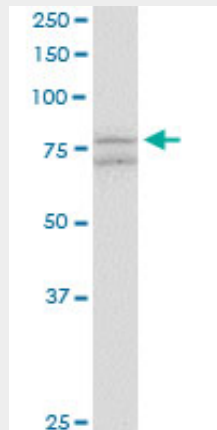
- [Western Blot](#)
- [Blocking Peptides](#)

- [Dot Blot](#)
- [Immunohistochemistry](#)
- [Immunofluorescence](#)
- [Immunoprecipitation](#)
- [Flow Cytometry](#)
- [Cell Culture](#)

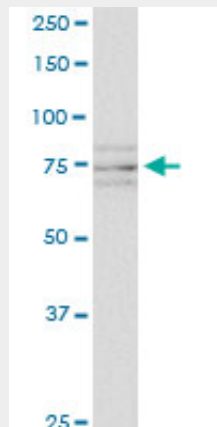
### SCYL1 Antibody (monoclonal) (M02) - Images



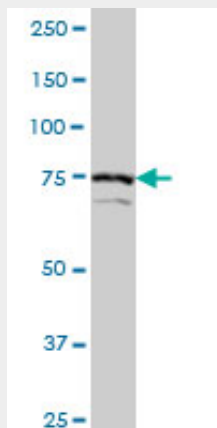
Antibody Reactive Against Recombinant Protein. Western Blot detection against Immunogen (36.63 KDa) .



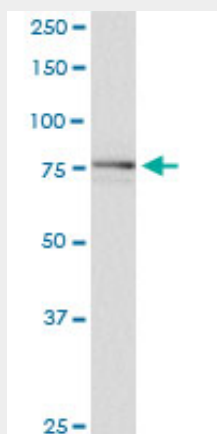
SCYL1 monoclonal antibody (M02), clone 2E5. Western Blot analysis of SCYL1 expression in human ovarian cancer.



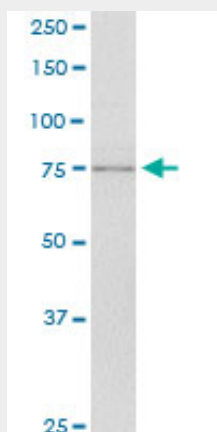
SCYL1 monoclonal antibody (M02), clone 2E5. Western Blot analysis of SCYL1 expression in PC-12.



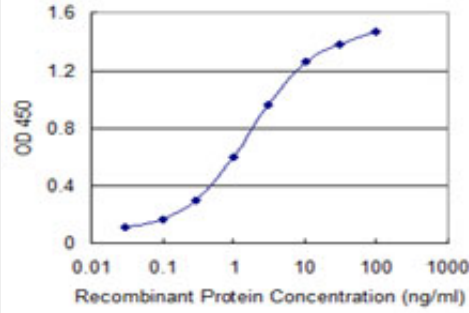
SCYL1 monoclonal antibody (M02), clone 2E5. Western Blot analysis of SCYL1 expression in Hela S3 NE (Cat # AT3798a)



SCYL1 monoclonal antibody (M02), clone 2E5. Western Blot analysis of SCYL1 expression in A-431.



SCYL1 monoclonal antibody (M02), clone 2E5. Western Blot analysis of SCYL1 expression in NIH/3T3.



Detection limit for recombinant GST tagged SCYL1 is 0.03 ng/ml as a capture antibody.

### **SCYL1 Antibody (monoclonal) (M02) - Background**

This gene encodes a transcriptional regulator belonging to the SCY1-like family of kinase-like proteins. The protein has a divergent N-terminal kinase domain that is thought to be catalytically inactive, and can bind specific DNA sequences through its C-terminal domain. It activates transcription of the telomerase reverse transcriptase and DNA polymerase beta genes. The protein has been localized to the nucleus, and also to the cytoplasm and centrosomes during mitosis. Multiple transcript variants encoding different isoforms have been found for this gene.

### **SCYL1 Antibody (monoclonal) (M02) - References**

1. Identification of Tyrosine-Phosphorylated Proteins Associated with Lung Cancer Metastasis using Label-Free Quantitative Analyses. Wu HY, Tseng VS, Chen LC, Chang HY, Chuang IC, Tsay YG, Liao PC. *J Proteome Res.* 2010 Jun 23. [Epub ahead of print]