

SAMM50 Antibody (monoclonal) (M04)

Mouse monoclonal antibody raised against a full length recombinant SAMM50.

Catalog # AT3770a

Specification

SAMM50 Antibody (monoclonal) (M04) - Product Information

Application	WB
Primary Accession	O9Y512
Other Accession	BC007830
Reactivity	Human
Host	mouse
Clonality	Monoclonal
Isotype	IgG2b Kappa
Calculated MW	51976

SAMM50 Antibody (monoclonal) (M04) - Additional Information

Gene ID 25813

Other Names

Sorting and assembly machinery component 50 homolog, Transformation-related gene 3 protein, TRG-3, SAMM50, SAM50

Target/Specificity

SAMM50 (AAH07830, 1 a.a. ~ 468 a.a) full-length recombinant protein with GST tag. MW of the GST tag alone is 26 KDa.

Dilution

WB~~1:500~1000

Format

Clear, colorless solution in phosphate buffered saline, pH 7.2 .

Storage

Store at -20°C or lower. Aliquot to avoid repeated freezing and thawing.

Precautions

SAMM50 Antibody (monoclonal) (M04) is for research use only and not for use in diagnostic or therapeutic procedures.

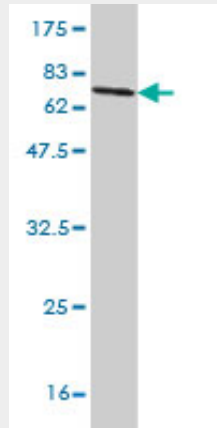
SAMM50 Antibody (monoclonal) (M04) - Protocols

Provided below are standard protocols that you may find useful for product applications.

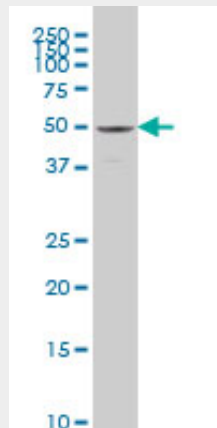
- [Western Blot](#)
- [Blocking Peptides](#)
- [Dot Blot](#)

- [Immunohistochemistry](#)
- [Immunofluorescence](#)
- [Immunoprecipitation](#)
- [Flow Cytometry](#)
- [Cell Culture](#)

SAMM50 Antibody (monoclonal) (M04) - Images



Antibody Reactive Against Recombinant Protein. Western Blot detection against Immunogen (77.22 kDa) .



SAMM50 monoclonal antibody (M04), clone 2A9 Western Blot analysis of SAMM50 expression in A-431 ((Cat # AT3770a)

SAMM50 Antibody (monoclonal) (M04) - Background

SAMM50 is a component of the sorting and assembly machinery (SAM) complex of the outer mitochondrial membrane. The SAM complex has a role in integrating beta-barrel proteins into the outer mitochondrial membrane (Humphries et al., 2005 [PubMed 15644312]).

SAMM50 Antibody (monoclonal) (M04) - References

1. Plasticity of TOM complex assembly in skeletal muscle mitochondria in response to chronic contractile activity. Joseph AM, Hood DA. Mitochondrion. 2011 Nov 25.