

SAE1 Antibody (monoclonal) (M01)

Mouse monoclonal antibody raised against a full length recombinant SAE1.

Catalog # AT3766a

Specification

SAE1 Antibody (monoclonal) (M01) - Product Information

Application	IF, WB, IHC, E
Primary Accession	O9UBE0
Other Accession	BC000344
Reactivity	Human
Host	Mouse
Clonality	Monoclonal
Isotype	IgG1 lambda
Calculated MW	38450

SAE1 Antibody (monoclonal) (M01) - Additional Information

Gene ID 10055

Other Names

SUMO-activating enzyme subunit 1, Ubiquitin-like 1-activating enzyme E1A, SUMO-activating enzyme subunit 1, N-terminally processed, SAE1, AOS1, SUA1, UBLE1A

Target/Specificity

SAE1 (AAH00344, 1 a.a. ~ 346 a.a) full-length recombinant protein with GST tag. MW of the GST tag alone is 26 KDa.

Dilution

WB~~1:500~1000

Format

Clear, colorless solution in phosphate buffered saline, pH 7.2 .

Storage

Store at -20°C or lower. Aliquot to avoid repeated freezing and thawing.

Precautions

SAE1 Antibody (monoclonal) (M01) is for research use only and not for use in diagnostic or therapeutic procedures.

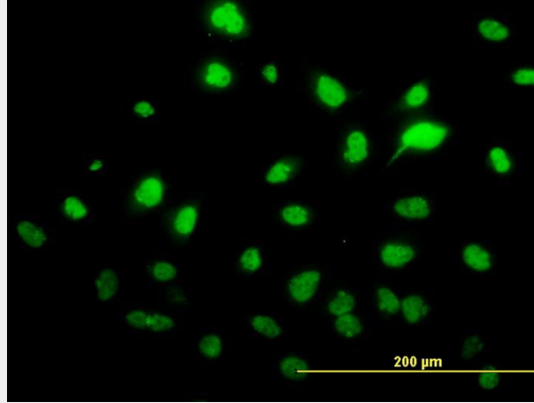
SAE1 Antibody (monoclonal) (M01) - Protocols

Provided below are standard protocols that you may find useful for product applications.

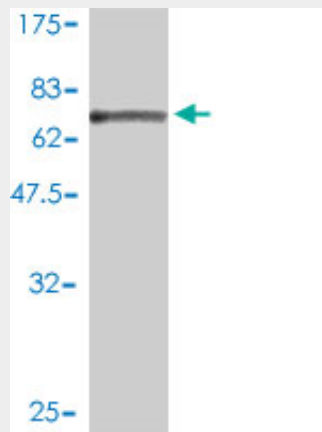
- [Western Blot](#)
- [Blocking Peptides](#)
- [Dot Blot](#)

- [Immunohistochemistry](#)
- [Immunofluorescence](#)
- [Immunoprecipitation](#)
- [Flow Cytometry](#)
- [Cell Culture](#)

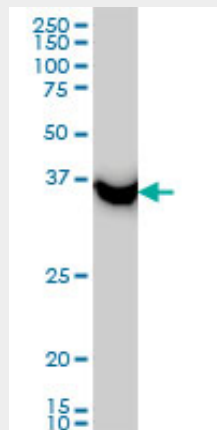
SAE1 Antibody (monoclonal) (M01) - Images



Immunofluorescence of monoclonal antibody to SAE1 on HeLa cell. [antibody concentration 10 ug/ml]

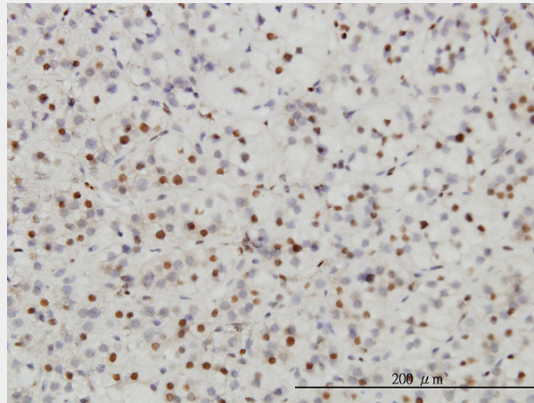


Antibody Reactive Against Recombinant Protein. Western Blot detection against Immunogen (63.8 KDa) .

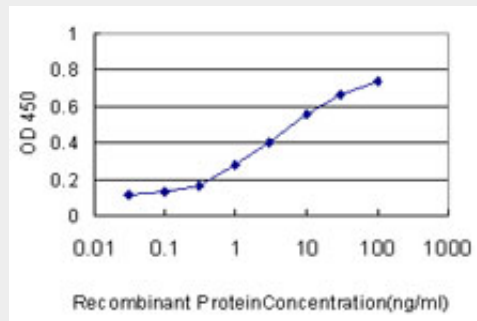


SAE1 monoclonal antibody (M01), clone 1G4-1G5 Western Blot analysis of SAE1 expression in

HeLa ((Cat # AT3766a)



Immunoperoxidase of monoclonal antibody to SAE1 on formalin-fixed paraffin-embedded human adrenal gland. [antibody concentration 3 ug/ml]



Detection limit for recombinant GST tagged SAE1 is approximately 0.1ng/ml as a capture antibody.

SAE1 Antibody (monoclonal) (M01) - Background

Posttranslational modification of proteins by the addition of the small protein SUMO (see SUMO1; MIM 601912), or sumoylation, regulates protein structure and intracellular localization. SAE1 and UBA2 (MIM 613295) form a heterodimer that functions as a SUMO-activating enzyme for the sumoylation of proteins (Okuma et al., 1999 [PubMed 9920803]).

SAE1 Antibody (monoclonal) (M01) - References

1. Autoantibodies to small ubiquitin-like modifier activating enzymes in Japanese patients with dermatomyositis: comparison with a UK Caucasian cohort. Fujimoto M, Matsushita T, Hamaguchi Y, Kaji K, Asano Y, Ogawa F, Yamaoka T, Fujikawa K, Tsukada T, Sato K, Echigo T, Hasegawa M, Takehara K. *Ann Rheum Dis*. 2012 Jul 26.