

S100A8 Antibody (monoclonal) (M01)

Mouse monoclonal antibody raised against a full length recombinant S100A8.

Catalog # AT3763a

Specification

S100A8 Antibody (monoclonal) (M01) - Product Information

Application	WB
Primary Accession	P05109
Other Accession	BC005928
Reactivity	Human
Host	Mouse
Clonality	Monoclonal
Isotype	IgG2a Kappa
Calculated MW	10835

S100A8 Antibody (monoclonal) (M01) - Additional Information

Gene ID 6279

Other Names

Protein S100-A8, Calgranulin-A, Calprotectin L1L subunit, Cystic fibrosis antigen, CFAG, Leukocyte L1 complex light chain, Migration inhibitory factor-related protein 8, MRP-8, p8, S100 calcium-binding protein A8, Urinary stone protein band A, Protein S100-A8, N-terminally processed, S100A8, CAGA, CFAG, MRP8

Target/Specificity

S100A8 (AAH05928.1, 1 a.a. ~ 93 a.a) full-length recombinant protein with GST tag. MW of the GST tag alone is 26 KDa.

Dilution

WB~~1:500~1000

Format

Clear, colorless solution in phosphate buffered saline, pH 7.2 .

Storage

Store at -20°C or lower. Aliquot to avoid repeated freezing and thawing.

Precautions

S100A8 Antibody (monoclonal) (M01) is for research use only and not for use in diagnostic or therapeutic procedures.

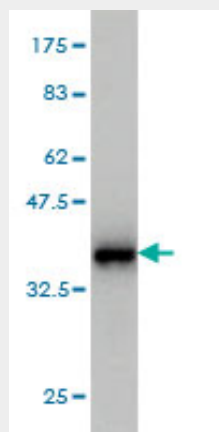
S100A8 Antibody (monoclonal) (M01) - Protocols

Provided below are standard protocols that you may find useful for product applications.

- [Western Blot](#)

- [Blocking Peptides](#)
- [Dot Blot](#)
- [Immunohistochemistry](#)
- [Immunofluorescence](#)
- [Immunoprecipitation](#)
- [Flow Cytometry](#)
- [Cell Culture](#)

S100A8 Antibody (monoclonal) (M01) - Images



Antibody Reactive Against Recombinant Protein. Western Blot detection against Immunogen (35.97 kDa) .

S100A8 Antibody (monoclonal) (M01) - Background

The protein encoded by this gene is a member of the S100 family of proteins containing 2 EF-hand calcium-binding motifs. S100 proteins are localized in the cytoplasm and/or nucleus of a wide range of cells, and involved in the regulation of a number of cellular processes such as cell cycle progression and differentiation. S100 genes include at least 13 members which are located as a cluster on chromosome 1q21. This protein may function in the inhibition of casein kinase and as a cytokine. Altered expression of this protein is associated with the disease cystic fibrosis.

S100A8 Antibody (monoclonal) (M01) - References

iPLA2, a novel determinant in Ca²⁺- and phosphorylation-dependent S100A8/A9 regulated NOX2 activity. Schenten V, et al. *Biochim Biophys Acta*, 2010 Jul. PMID 20219570. Evaluation of calprotectin level in intestinal content as an early marker for graft rejection. Cagnola H, et al. *Transplant Proc*, 2010 Jan-Feb. PMID 20172281. S100A8/A9 induces autophagy and apoptosis via ROS-mediated cross-talk between mitochondria and lysosomes that involves BNIP3. Ghavami S, et al. *Cell Res*, 2010 Mar. PMID 19935772. S100A8/A9: a mediator of severe asthma pathogenesis and morbidity? Halayko AJ, et al. *Can J Physiol Pharmacol*, 2009 Oct. PMID 19898558. Calprotectin--a novel marker of obesity. Mortensen OH, et al. *PLoS One*, 2009 Oct 12. PMID 19823685.