

**S100A6 Antibody (monoclonal) (M10)**

Mouse monoclonal antibody raised against a full length recombinant S100A6.

Catalog # AT3759a

**Specification**

---

**S100A6 Antibody (monoclonal) (M10) - Product Information**

Application	IF, WB, IHC, E
Primary Accession	<a href="#">P06703</a>
Other Accession	<a href="#">BC001431</a>
Reactivity	Human
Host	mouse
Clonality	Monoclonal
Isotype	IgG1 Kappa
Calculated MW	10180

**S100A6 Antibody (monoclonal) (M10) - Additional Information****Gene ID** 6277**Other Names**

Protein S100-A6, Calcyclin, Growth factor-inducible protein 2A9, MLN 4, Prolactin receptor-associated protein, PRA, S100 calcium-binding protein A6, S100A6, CACY

**Target/Specificity**

S100A6 (AAH01431, 1 a.a. ~ 90 a.a) full-length recombinant protein with GST tag. MW of the GST tag alone is 26 KDa.

**Dilution**

WB~~1:500~1000

**Format**

Clear, colorless solution in phosphate buffered saline, pH 7.2 .

**Storage**

Store at -20°C or lower. Aliquot to avoid repeated freezing and thawing.

**Precautions**

S100A6 Antibody (monoclonal) (M10) is for research use only and not for use in diagnostic or therapeutic procedures.

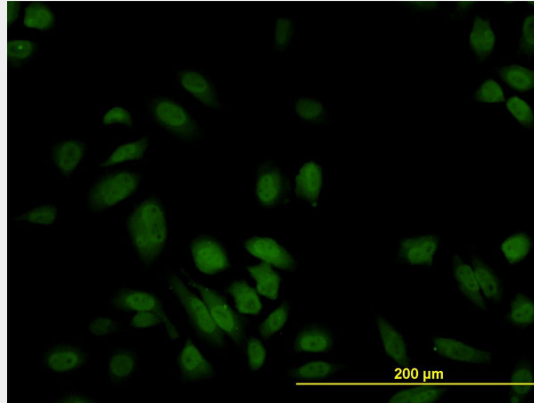
**S100A6 Antibody (monoclonal) (M10) - Protocols**

Provided below are standard protocols that you may find useful for product applications.

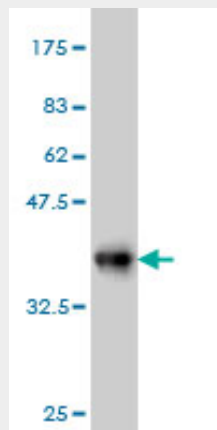
- [Western Blot](#)
- [Blocking Peptides](#)
- [Dot Blot](#)

- [Immunohistochemistry](#)
- [Immunofluorescence](#)
- [Immunoprecipitation](#)
- [Flow Cytometry](#)
- [Cell Culture](#)

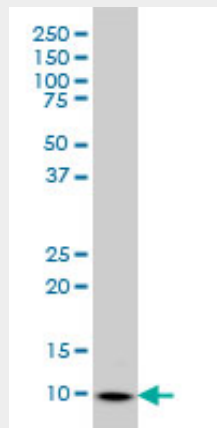
### S100A6 Antibody (monoclonal) (M10) - Images



Immunofluorescence of monoclonal antibody to S100A6 on HeLa cell. [antibody concentration 10 ug/ml]

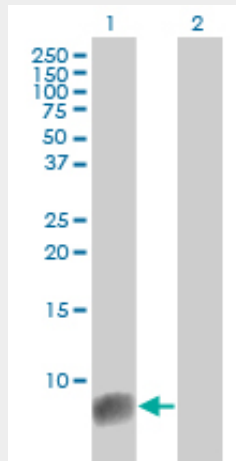


Antibody Reactive Against Recombinant Protein. Western Blot detection against Immunogen (35.64 KDa) .



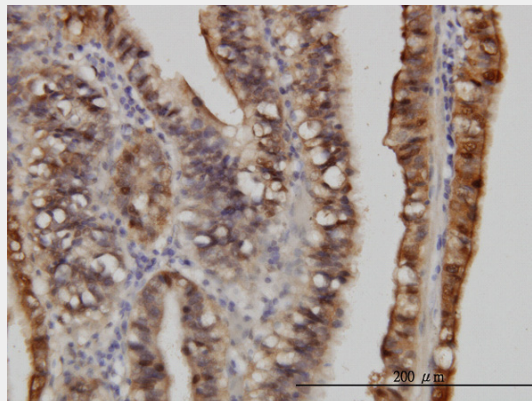
S100A6 monoclonal antibody (M10), clone 6B5 Western Blot analysis of S100A6 expression in

HeLa ( (Cat # AT3759a )

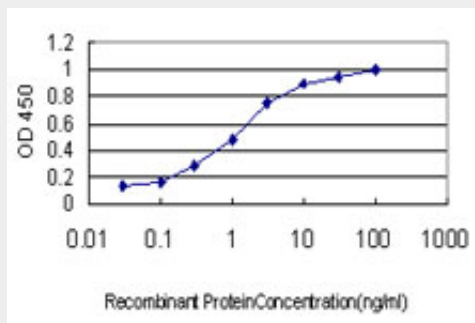


Western Blot analysis of S100A6 expression in transfected 293T cell line by S100A6 monoclonal antibody (M10), clone 6B5.

Lane 1: S100A6 transfected lysate(10.2 KDa).  
 Lane 2: Non-transfected lysate.



Immunoperoxidase of monoclonal antibody to S100A6 on formalin-fixed paraffin-embedded human stomach carcinoma. [antibody concentration 3 ug/ml]



Detection limit for recombinant GST tagged S100A6 is approximately 0.03ng/ml as a capture antibody.

### S100A6 Antibody (monoclonal) (M10) - Background

The protein encoded by this gene is a member of the S100 family of proteins containing 2 EF-hand calcium-binding motifs. S100 proteins are localized in the cytoplasm and/or nucleus of a wide range

of cells, and involved in the regulation of a number of cellular processes such as cell cycle progression and differentiation. S100 genes include at least 13 members which are located as a cluster on chromosome 1q21. This protein may function in stimulation of Ca<sup>2+</sup>-dependent insulin release, stimulation of prolactin secretion, and exocytosis. Chromosomal rearrangements and altered expression of this gene have been implicated in melanoma.

### **S100A6 Antibody (monoclonal) (M10) - References**

1. Identification of novel molecular markers through transcriptomic analysis in human fetal and adult corneal endothelial cells. Chen Y, Huang K, Nakatsu MN, Xue Z, Deng SX, Fan G. Hum Mol Genet. 2013 Jan 8;22(1):1-11. doi: 10.1093/hmg/ddt311. Epub 2012 Nov 20.

2. S100A expression in normal corneal-limbal epithelial cells and ocular surface squamous cell carcinoma tissue. Li J, Riau AK, Setiawan M, Mehta JS, Ti SE, Tong L, Tan DT, Beuerman RW. Mol Vis. 2011;17:2263-71. Epub 2011 Aug 20.