

**S100A3 Antibody (monoclonal) (M01)**

Mouse monoclonal antibody raised against a partial recombinant S100A3.

Catalog # AT3756a

**Specification**

---

**S100A3 Antibody (monoclonal) (M01) - Product Information**

Application	WB
Primary Accession	<a href="#">P33764</a>
Other Accession	<a href="#">NM_002960</a>
Reactivity	Human
Host	mouse
Clonality	Monoclonal
Isotype	IgG2a Kappa
Calculated MW	11713

**S100A3 Antibody (monoclonal) (M01) - Additional Information****Gene ID** 6274**Other Names**

Protein S100-A3, Protein S-100E, S100 calcium-binding protein A3, S100A3, S100E

**Target/Specificity**

S100A3 (NP\_002951, 1 a.a. ~ 101 a.a) partial recombinant protein with GST tag. MW of the GST tag alone is 26 KDa.

**Dilution**

WB~~1:500~1000

**Format**

Clear, colorless solution in phosphate buffered saline, pH 7.2 .

**Storage**

Store at -20°C or lower. Aliquot to avoid repeated freezing and thawing.

**Precautions**

S100A3 Antibody (monoclonal) (M01) is for research use only and not for use in diagnostic or therapeutic procedures.

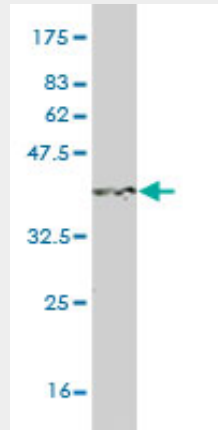
**S100A3 Antibody (monoclonal) (M01) - Protocols**

Provided below are standard protocols that you may find useful for product applications.

- [Western Blot](#)
- [Blocking Peptides](#)
- [Dot Blot](#)
- [Immunohistochemistry](#)

- [Immunofluorescence](#)
- [Immunoprecipitation](#)
- [Flow Cytometry](#)
- [Cell Culture](#)

### **S100A3 Antibody (monoclonal) (M01) - Images**



Antibody Reactive Against Recombinant Protein. Western Blot detection against Immunogen (36.85 kDa) .

### **S100A3 Antibody (monoclonal) (M01) - Background**

The protein encoded by this gene is a member of the S100 family of proteins containing 2 EF-hand calcium-binding motifs. S100 proteins are localized in the cytoplasm and/or nucleus of a wide range of cells, and involved in the regulation of a number of cellular processes such as cell cycle progression and differentiation. S100 genes include at least 13 members which are located as a cluster on chromosome 1q21. This protein has the highest content of cysteines of all S100 proteins, has a high affinity for Zinc, and is highly expressed in human hair cuticle. The precise function of this protein is unknown.

### **S100A3 Antibody (monoclonal) (M01) - References**

Genome-wide analysis of chromosomal alterations in patients with esophageal squamous cell carcinoma exposed to tobacco and betel quid from high-risk area in India. Chattopadhyay I, et al. *Mutat Res*, 2010 Feb 2. PMID 20083228. Variation in genes of the epidermal differentiation complex in German atopic dermatitis patients. Stemmler S, et al. *Int J Immunogenet*, 2009 Aug. PMID 19601998. Specific citrullination causes assembly of a globular S100A3 homotetramer: a putative Ca<sup>2+</sup> modulator matures human hair cuticle. Kizawa K, et al. *J Biol Chem*, 2008 Feb 22. PMID 18083705. Large-scale mapping of human protein-protein interactions by mass spectrometry. Ewing RM, et al. *Mol Syst Biol*, 2007. PMID 17353931. The DNA sequence and biological annotation of human chromosome 1. Gregory SG, et al. *Nature*, 2006 May 18. PMID 16710414.