

S100A10 Antibody (monoclonal) (M01)

Mouse monoclonal antibody raised against a full length recombinant S100A10.

Catalog # AT3751a

Specification

S100A10 Antibody (monoclonal) (M01) - Product Information

Application	IF, WB, E
Primary Accession	P60903
Other Accession	BC015973
Reactivity	Human
Host	mouse
Clonality	Monoclonal
Isotype	IgG1 Kappa
Calculated MW	11203

S100A10 Antibody (monoclonal) (M01) - Additional Information

Gene ID 6281

Other Names

Protein S100-A10, Calpactin I light chain, Calpactin-1 light chain, Cellular ligand of annexin II, S100 calcium-binding protein A10, p10 protein, p11, S100A10, ANX2LG, CAL1L, CLP11

Target/Specificity

S100A10 (AAH15973, 1 a.a. ~ 97 a.a) full-length recombinant protein with GST tag. MW of the GST tag alone is 26 KDa.

Dilution

WB~~1:500~1000

Format

Clear, colorless solution in phosphate buffered saline, pH 7.2 .

Storage

Store at -20°C or lower. Aliquot to avoid repeated freezing and thawing.

Precautions

S100A10 Antibody (monoclonal) (M01) is for research use only and not for use in diagnostic or therapeutic procedures.

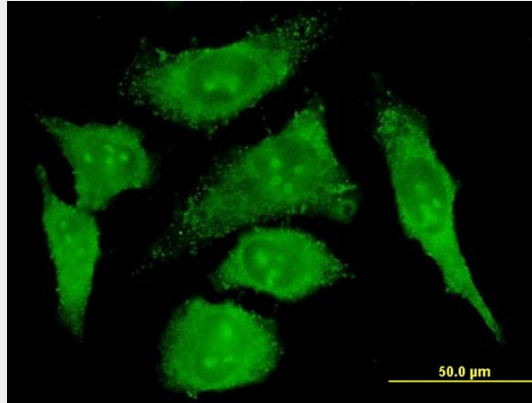
S100A10 Antibody (monoclonal) (M01) - Protocols

Provided below are standard protocols that you may find useful for product applications.

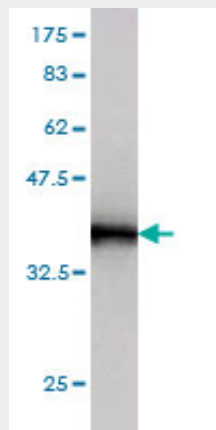
- [Western Blot](#)
- [Blocking Peptides](#)
- [Dot Blot](#)

- [Immunohistochemistry](#)
- [Immunofluorescence](#)
- [Immunoprecipitation](#)
- [Flow Cytometry](#)
- [Cell Culture](#)

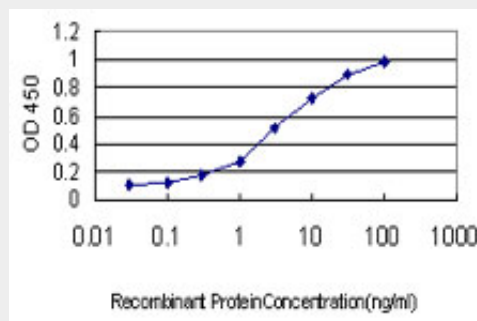
S100A10 Antibody (monoclonal) (M01) - Images



Immunofluorescence of monoclonal antibody to S100A10 on HeLa cell . [antibody concentration 10 ug/ml]



Antibody Reactive Against Recombinant Protein. Western Blot detection against Immunogen (36.41 KDa) .



Detection limit for recombinant GST tagged S100A10 is approximately 0.1ng/ml as a capture antibody.

S100A10 Antibody (monoclonal) (M01) - Background

The protein encoded by this gene is a member of the S100 family of proteins containing 2 EF-hand calcium-binding motifs. S100 proteins are localized in the cytoplasm and/or nucleus of a wide range of cells, and involved in the regulation of a number of cellular processes such as cell cycle progression and differentiation. S100 genes include at least 13 members which are located as a cluster on chromosome 1q21. This protein may function in exocytosis and endocytosis.

S100A10 Antibody (monoclonal) (M01) - References

Regulation of cellular actin architecture by S100A10. Jung MJ, et al. *Exp Cell Res*, 2010 Apr 15. PMID 20100475. Regulation of CFTR function by annexin A2-S100A10 complex in health and disease. Muimo R. *Gen Physiol Biophys*, 2009. PMID 20093721. The variant rs1867277 in FOXE1 gene confers thyroid cancer susceptibility through the recruitment of USF1/USF2 transcription factors. Landa I, et al. *PLoS Genet*, 2009 Sep. PMID 19730683. Variation in genes of the epidermal differentiation complex in German atopic dermatitis patients. Stemmler S, et al. *Int J Immunogenet*, 2009 Aug. PMID 19601998. Expression patterns of S100 proteins in melanocytes and melanocytic lesions. Petersson S, et al. *Melanoma Res*, 2009 Aug. PMID 19521263.