

## **RUNX1 Antibody (monoclonal) (M06)**

Mouse monoclonal antibody raised against a partial recombinant RUNX1.

Catalog # AT3739a

### **Specification**

---

#### **RUNX1 Antibody (monoclonal) (M06) - Product Information**

Application	IF, WB, IHC, E
Primary Accession	<a href="#">O01196</a>
Other Accession	<a href="#">NM_001001890</a>
Reactivity	Human
Host	mouse
Clonality	Monoclonal
Isotype	IgG2a Kappa
Calculated MW	48737

#### **RUNX1 Antibody (monoclonal) (M06) - Additional Information**

**Gene ID** 861

##### **Other Names**

Runt-related transcription factor 1, Acute myeloid leukemia 1 protein, Core-binding factor subunit alpha-2, CBF-alpha-2, Oncogene AML-1, Polyomavirus enhancer-binding protein 2 alpha B subunit, PEA2-alpha B, PEBP2-alpha B, SL3-3 enhancer factor 1 alpha B subunit, SL3/AKV core-binding factor alpha B subunit, RUNX1, AML1, CBFA2

##### **Target/Specificity**

RUNX1 (NP\_001001890.1, 210 a.a. ~ 310 a.a) partial recombinant protein with GST tag. MW of the GST tag alone is 26 KDa.

##### **Dilution**

WB~~1:500~1000

##### **Format**

Clear, colorless solution in phosphate buffered saline, pH 7.2 .

##### **Storage**

Store at -20°C or lower. Aliquot to avoid repeated freezing and thawing.

##### **Precautions**

RUNX1 Antibody (monoclonal) (M06) is for research use only and not for use in diagnostic or therapeutic procedures.

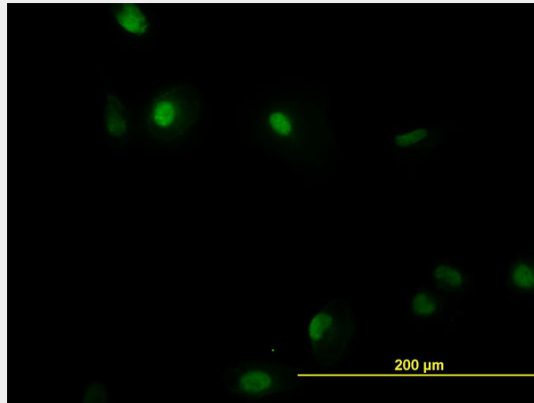
#### **RUNX1 Antibody (monoclonal) (M06) - Protocols**

Provided below are standard protocols that you may find useful for product applications.

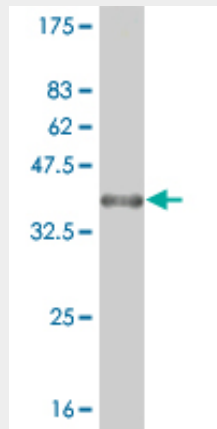
- [Western Blot](#)

- [Blocking Peptides](#)
- [Dot Blot](#)
- [Immunohistochemistry](#)
- [Immunofluorescence](#)
- [Immunoprecipitation](#)
- [Flow Cytometry](#)
- [Cell Culture](#)

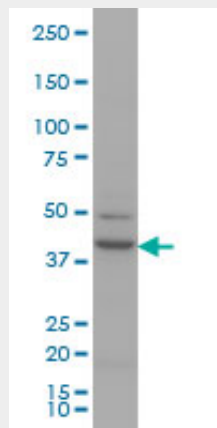
### RUNX1 Antibody (monoclonal) (M06) - Images



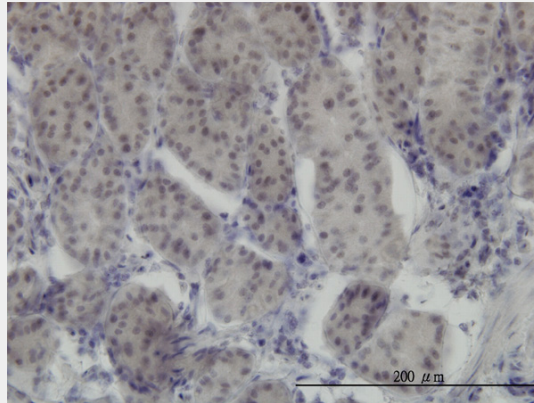
Immunofluorescence of monoclonal antibody to RUNX1 on HeLa cell. [antibody concentration 40 ug/ml]



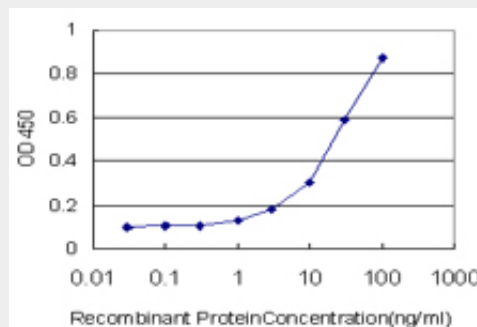
Antibody Reactive Against Recombinant Protein. Western Blot detection against Immunogen (36.85 KDa) .



RUNX1 monoclonal antibody (M06), clone 2C10 Western Blot analysis of RUNX1 expression in Hela S3 NE ( (Cat # AT3739a )



Immunoperoxidase of monoclonal antibody to RUNX1 on formalin-fixed paraffin-embedded human stomach. [antibody concentration 1.5 ug/ml]



Detection limit for recombinant GST tagged RUNX1 is approximately 1ng/ml as a capture antibody.

### **RUNX1 Antibody (monoclonal) (M06) - Background**

Core binding factor (CBF) is a heterodimeric transcription factor that binds to the core element of many enhancers and promoters. The protein encoded by this gene represents the alpha subunit of CBF and is thought to be involved in the development of normal hematopoiesis. Chromosomal translocations involving this gene are well-documented and have been associated with several types of leukemia. Three transcript variants encoding different isoforms have been found for this gene.

### **RUNX1 Antibody (monoclonal) (M06) - References**

1. Transcription factor Runx2 is a regulator of epithelial-mesenchymal transition and invasion in thyroid carcinomas. Niu DF, Kondo T, Nakazawa T, Oishi N, Kawasaki T, Mochizuki K, Yamane T, Katoh R. Lab Invest. 2012 May 28. doi: 10.1038/labinvest.2012.84. 2. Megakaryocytic expression of miRNA 10a, 17-5p, 20a and 126 in Philadelphia chromosome-negative myeloproliferative neoplasm. Hussein K, Dralle W, Theophile K, Kreipe H, Bock O. Ann Hematol. 2009 Apr;88(4):325-32. Epub 2008 Sep 5.