

RRAS2 Antibody (monoclonal) (M01)

Mouse monoclonal antibody raised against a full length recombinant RRAS2.

Catalog # AT3728a

Specification

RRAS2 Antibody (monoclonal) (M01) - Product Information

Application	IF, WB, IHC, E
Primary Accession	P62070
Other Accession	BC013106
Reactivity	Human, Mouse, Rat
Host	mouse
Clonality	Monoclonal
Isotype	IgG1 Kappa
Calculated MW	23400

RRAS2 Antibody (monoclonal) (M01) - Additional Information

Gene ID 22800

Other Names

Ras-related protein R-Ras2, Ras-like protein TC21, Teratocarcinoma oncogene, RRAS2, TC21

Target/Specificity

RRAS2 (AAH13106, 1 a.a. ~ 204 a.a) full-length recombinant protein with GST tag. MW of the GST tag alone is 26 KDa.

Dilution

WB ~ ~1:500~1000

Format

Clear, colorless solution in phosphate buffered saline, pH 7.2 .

Storage

Store at -20°C or lower. Aliquot to avoid repeated freezing and thawing.

Precautions

RRAS2 Antibody (monoclonal) (M01) is for research use only and not for use in diagnostic or therapeutic procedures.

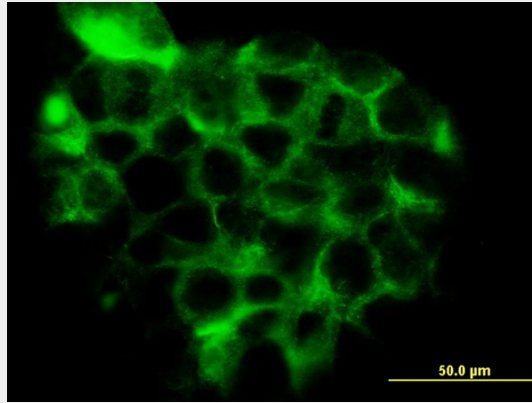
RRAS2 Antibody (monoclonal) (M01) - Protocols

Provided below are standard protocols that you may find useful for product applications.

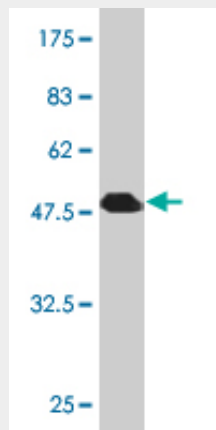
- [Western Blot](#)
- [Blocking Peptides](#)
- [Dot Blot](#)
- [Immunohistochemistry](#)

- [Immunofluorescence](#)
- [Immunoprecipitation](#)
- [Flow Cytometry](#)
- [Cell Culture](#)

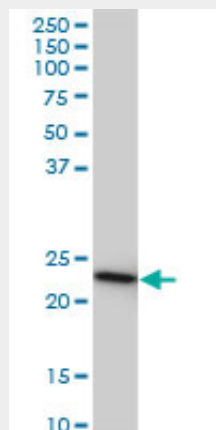
RRAS2 Antibody (monoclonal) (M01) - Images



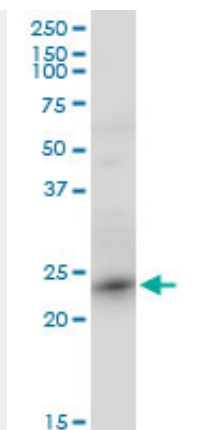
Immunofluorescence of monoclonal antibody to RRAS2 on A-431 cell. [antibody concentration 10 ug/ml]



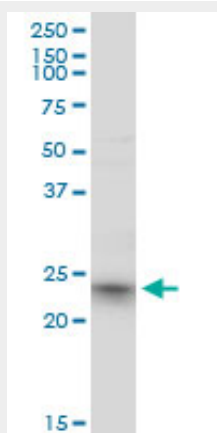
Antibody Reactive Against Recombinant Protein. Western Blot detection against Immunogen (48.18 KDa) .



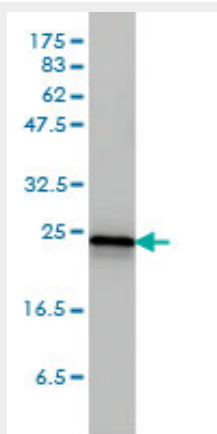
RRAS2 monoclonal antibody (M01), clone 2D3-4B8. Western Blot analysis of RRAS2 expression in HeLa ((Cat # AT3728a)



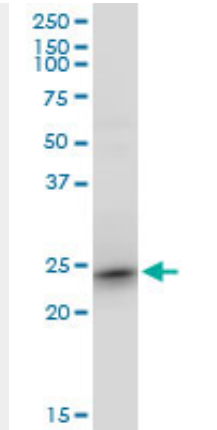
RRAS2 monoclonal antibody (M01), clone 2D3-4B8. Western Blot analysis of RRAS2 expression in PC-12((Cat # AT3728a)



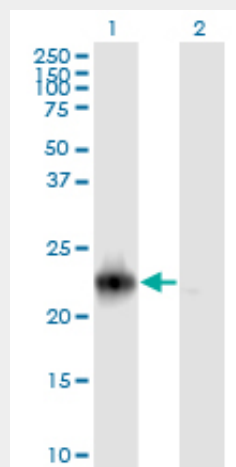
RRAS2 monoclonal antibody (M01), clone 2D3-4B8. Western Blot analysis of RRAS2 expression in Raw 264.7((Cat # AT3728a)



RRAS2 monoclonal antibody (M01), clone 2D3-4B8 Western Blot analysis of RRAS2 expression in A-431 ((Cat # AT3728a)

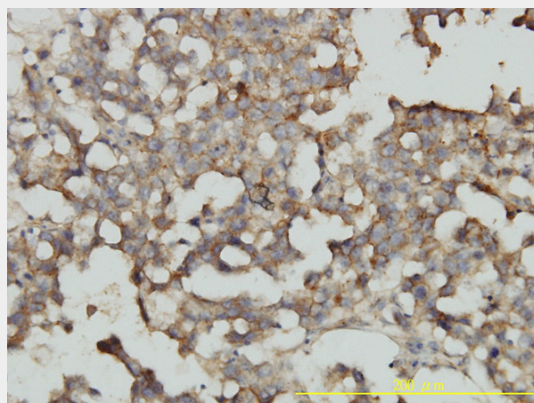


RRAS2 monoclonal antibody (M01), clone 2D3-4B8. Western Blot analysis of RRAS2 expression in NIH/3T3((Cat # AT3728a)

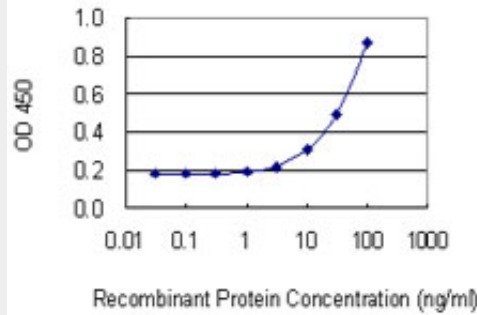


Western Blot analysis of RRAS2 expression in transfected 293T cell line by RRAS2 monoclonal antibody (M01), clone 2D3-4B8.

Lane 1: RRAS2 transfected lysate (Predicted MW: 23.4 KDa).
Lane 2: Non-transfected lysate.



Immunoperoxidase of monoclonal antibody to RRAS2 on formalin-fixed paraffin-embedded human dysgerminoma tissue. [antibody concentration 5 ug/ml]



Detection limit for recombinant GST tagged RRAS2 is 1 ng/ml as a capture antibody.

RRAS2 Antibody (monoclonal) (M01) - Background

This gene encodes a member of the R-Ras subfamily of Ras-like small GTPases. The encoded protein associates with the plasma membrane and may function as a signal transducer. This protein may play an important role in activating signal transduction pathways that control cell proliferation. Mutations in this gene are associated with the growth of certain tumors. Pseudogenes of this gene are found on chromosomes 1 and 2. Alternate splicing results in multiple transcript variants.

RRAS2 Antibody (monoclonal) (M01) - References

1. In Vivo Regulation of TGF- β by R-Ras2 Revealed through Loss of the RasGAP Protein NF1. Patmore DM, Welch S, Fulkerson PC, Wu J, Choi K, Eaves D, Kordich JJ, Collins MH, Cripe TP, Ratner N. *Cancer Res.* 2012 Oct 15;72(20):5317-27. doi: 10.1158/0008-5472.CAN-12-1972. Epub 2012 Aug 23.